

# Sew Confident!

CLASS IN A FLASH

## Liberty Cowl Top

By Linda Lee

THE SEWING WORKSHOP



# The Starting Point

- The best-selling Liberty Shirt pattern has a recommended list of fabrics—all woven.
- But as our wonderful customers always do, they break our rules and make up our patterns in unexpected ways.
- One of the best ideas to come forward is to use a knit and make the Liberty Shirt as a casual top. No buttons, different collar, easy wear and fit.



*Use the Liberty Shirt pattern to make a loose-fitting knit top.*

# Add the Alex Cowl Collar

■ The cowl collar from the Alex Top pattern is superimposed on the neckline of the Liberty Shirt.



*Alex Top*

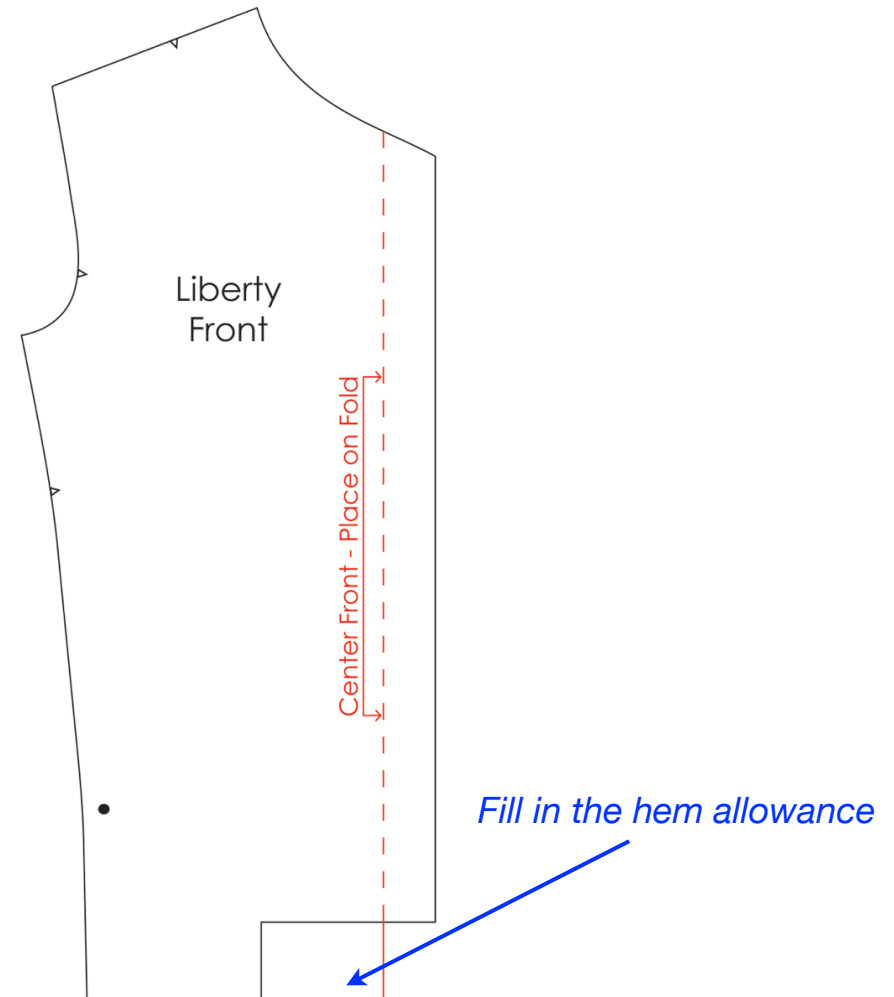


*Love those drapey viscose (rayon) knits in stripes!*



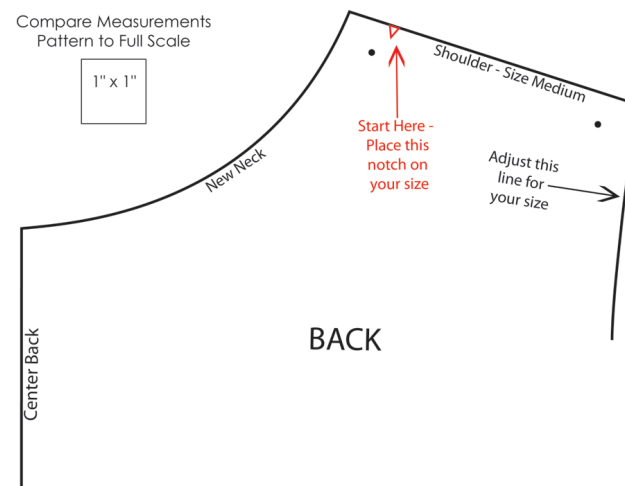
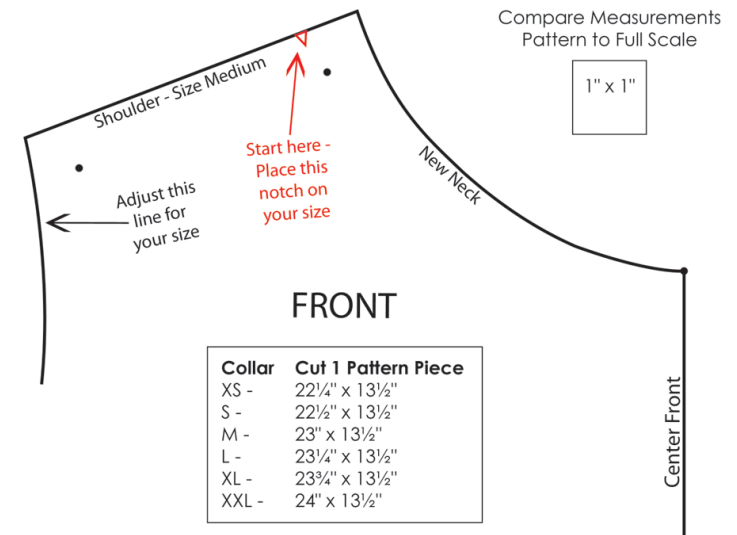
# Pattern Prep

- On the **Front** pattern piece, identify the center front and place that line on the *fold* of the fabric.
- Extend the bottom cutting line to the center front so there is a complete 3" hem allowance.

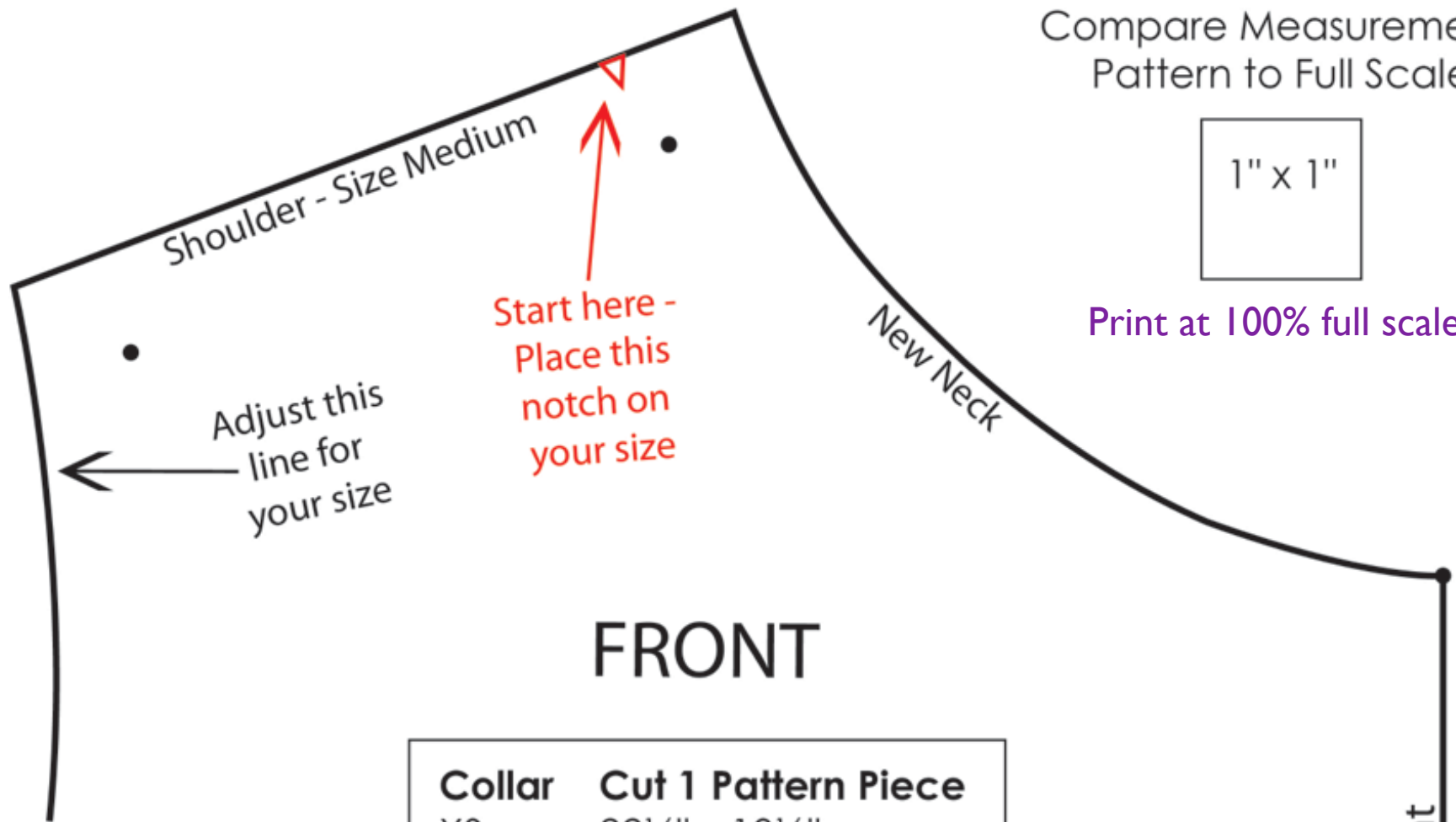


# Pattern Prep

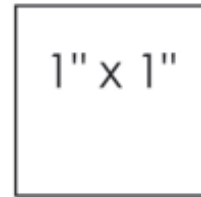
- Use the notch along the shoulder cutting line as the starting point.
- Place your Liberty Shirt pattern pieces over the corresponding front and back templates.
- Extend your shoulder lines to the corresponding armhole lines.
- Align the center front lines.
- Trace the new necklines.



*See pages 6 and 7 to print full scale templates.*



Compare Measurements  
Pattern to Full Scale



1" x 1"

Print at 100% full scale

# FRONT

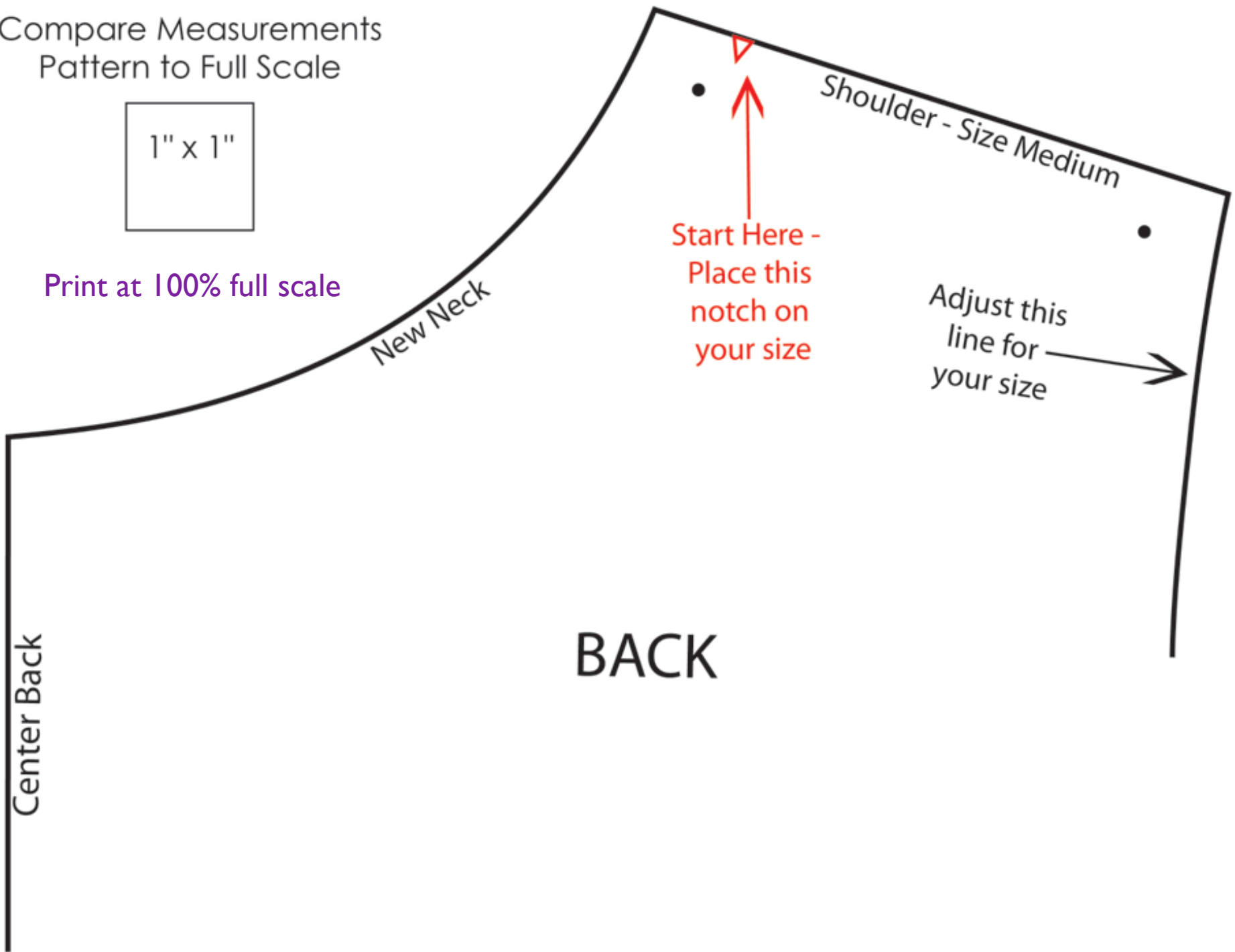
| Collar | Cut 1 Pattern Piece   |
|--------|---|
| XS -   | 22 <sup>1</sup> / <sub>4</sub> " x 13 <sup>1</sup> / <sub>2</sub> " |
| S -    | 22 <sup>1</sup> / <sub>2</sub> " x 13 <sup>1</sup> / <sub>2</sub> " |
| M -    | 23" x 13 <sup>1</sup> / <sub>2</sub> "                              |
| L -    | 23 <sup>1</sup> / <sub>4</sub> " x 13 <sup>1</sup> / <sub>2</sub> " |
| XL -   | 23 <sup>3</sup> / <sub>4</sub> " x 13 <sup>1</sup> / <sub>2</sub> " |
| XXL -  | 24" x 13 <sup>1</sup> / <sub>2</sub> "                              |

Center Front

Compare Measurements  
Pattern to Full Scale



Print at 100% full scale



# Pattern Prep

---

■ Make a pattern piece for the cowl collar in your size using the chart.

■ The pattern piece is a horizontal rectangle.

■  $\frac{5}{8}$ " seam allowances are included in the measurements.

| <b>Collar</b> | <b>Cut 1 Pattern Piece</b>              |
|---------------|---|
| XS -          | 22 $\frac{1}{4}$ " x 13 $\frac{1}{2}$ " |
| S -           | 22 $\frac{1}{2}$ " x 13 $\frac{1}{2}$ " |
| M -           | 23" x 13 $\frac{1}{2}$ "                |
| L -           | 23 $\frac{1}{4}$ " x 13 $\frac{1}{2}$ " |
| XL -          | 23 $\frac{3}{4}$ " x 13 $\frac{1}{2}$ " |
| XXL -         | 24" x 13 $\frac{1}{2}$ "                |



# Order of Construction

---

■ Use the guide sheet included in the Liberty Shirt pattern as the general order of construction.

1. Hem the front.

2. Miter the corners on the back; hem the back.

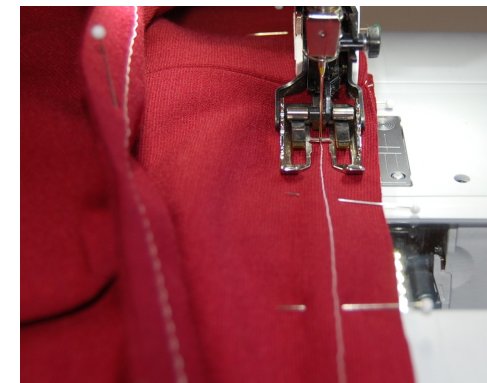
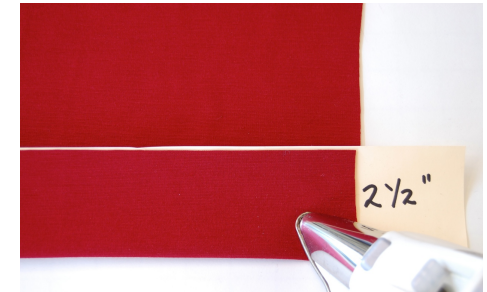
3. Sew or serge the shoulder seams (do not sew French seams as the guide sheet indicates).

4. Install the cowl collar.

5. Sew or serge the side seams (no French seams here either).

7. Construct the sleeve and cuff detail.

6. Construct and insert the sleeves.



# Hem the Front

- Cut  $\frac{1}{2}$ " off the bottom of the hem allowance leaving a finished hem allowance of  $2\frac{1}{2}$ " (no need for a hem turndown on a knit).
- Cut a piece of tagboard (manila file folder)  $2\frac{1}{2}$ " by 11".
- Place the tagboard template on the wrong side of the fabric.
- Press the hem allowance up and over the template, matching the raw edge of the fabric to the top of the template.
- Fuse a strip of Fusi-Web along the bottom edge of the wrong side of the hem allowance.



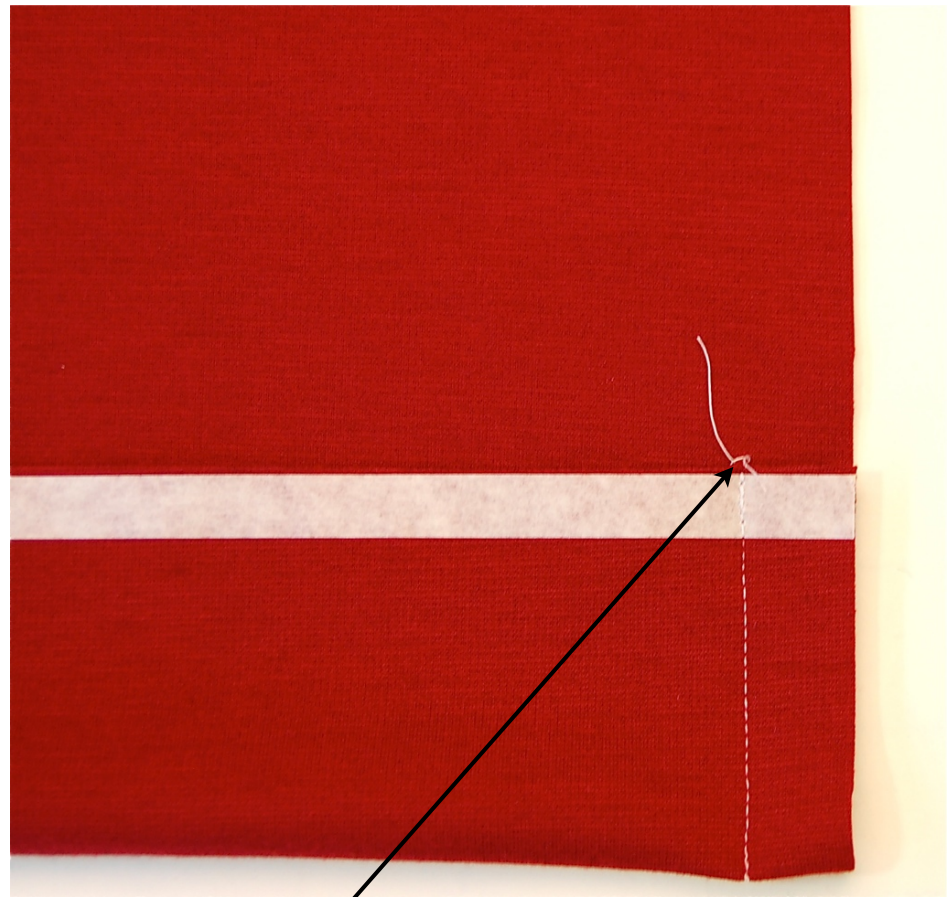
*Press through all layers. Move the tagboard template as needed to press the entire hem width.*



# Hem the Front

---

- Turn the hem to the right side.
- Stitch the side seam from the top of the hem to the bottom.
- Leave the paper covering on the Fusi-Web until it is time to fuse the hem in place.



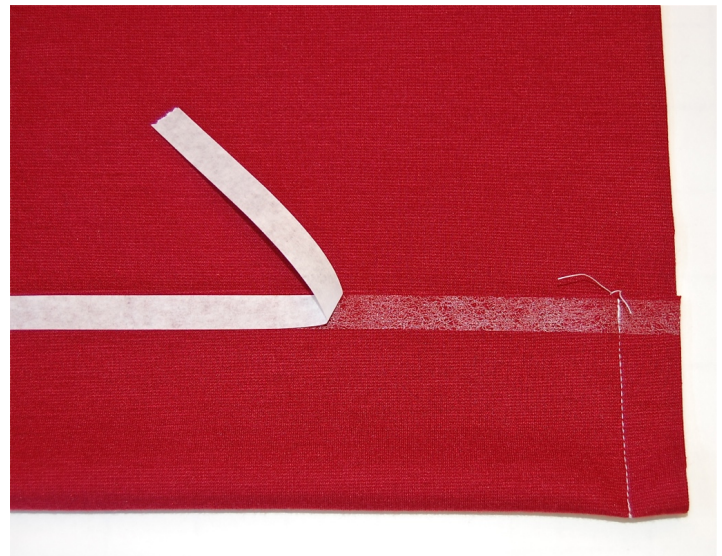
*Use the tailor tack as a guide to match the raw edge of the hem when folding to the right side.*

# Hem the Front

- Press the seam open over a point presser.
- Remove the paper covering from the Fusi-Web.
- Turn the hem to the right side and press, allowing the Fusi-Web to "glue" the hem in place.



*Point Presser/Clapper*



# Hem the Front

- Using a straight edge and a Chakoner, chalk mark the topstitching line on the right side of the fabric.
- Topstitch the hem in place using a walking foot (also called an even-feed foot).
- A walking foot is an essential presser foot for sewing knits. It prevents the fabric from creeping and keeps seams and hems flat without puckers.

*Use only a white chalk marker. Other colors, such as red and blue, may not disappear.*



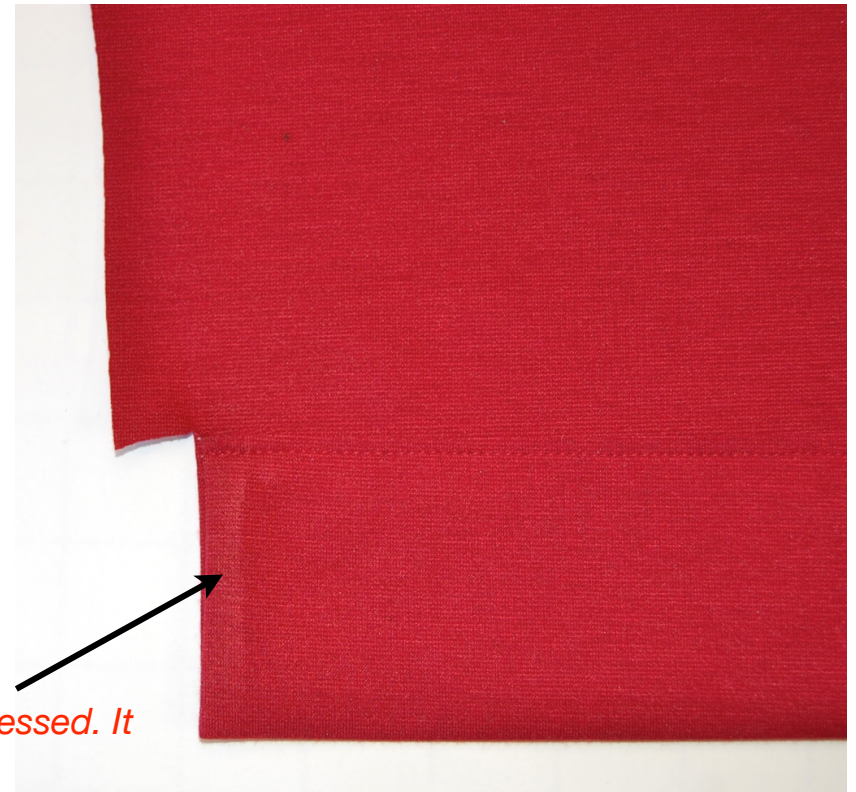
**CHAKONER**



# Hem the Front

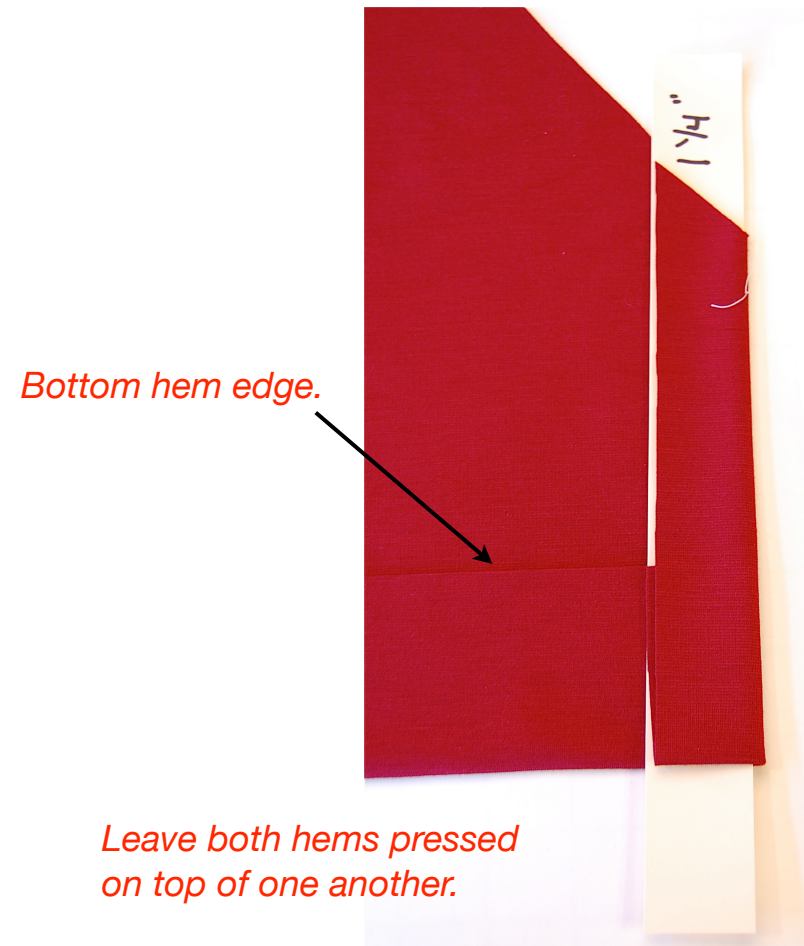
---

- Clip the side seam allowance to the dot at the top of the hem.
- Be careful not to over press knits because they have a tendency to shine. A light touch is always best.
- Hint: Place a tagboard template between the hem and the front to help eliminate pressing that shows on the right side.



# Prepare the Back Hem

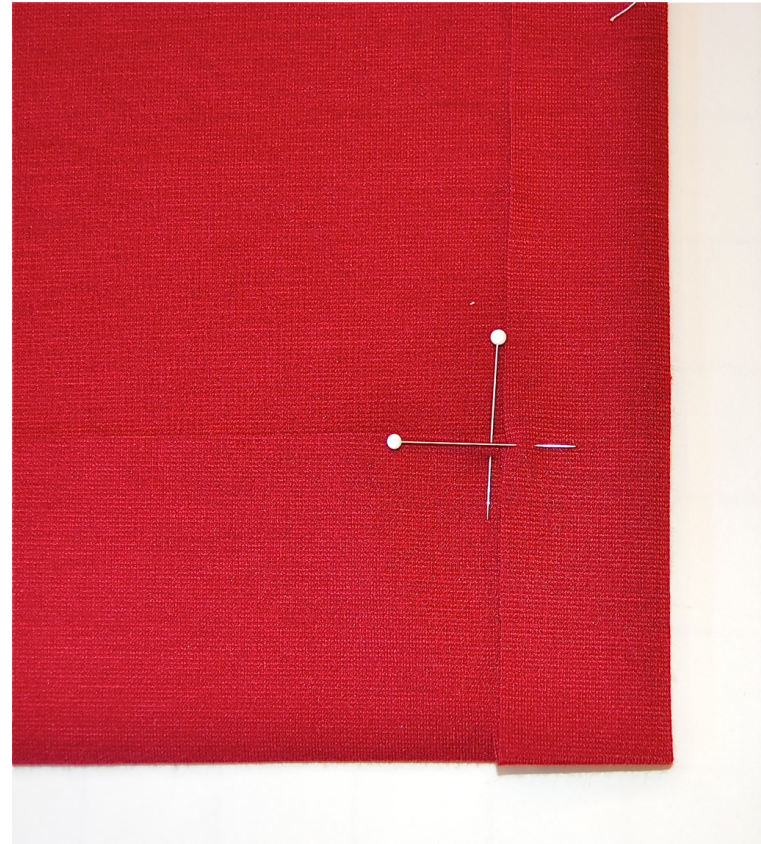
- Cut  $\frac{1}{2}$ " off the bottom of the hem and side vent allowances.
- Cut two tagboard templates:
  - $2\frac{1}{2}$ " X 11" (use the template from the front)
  - $1\frac{1}{4}$ " X 11"
- Use the templates to press the bottom and side vent hems in place.



# Miter the Corners

---

- Press the two adjacent hems in place. Place one pin in one hem allowance only, exactly where the edges intersect and perpendicular to the hem edge.
- Place a second pin in the opposite hem edge at the intersection of the two hems.

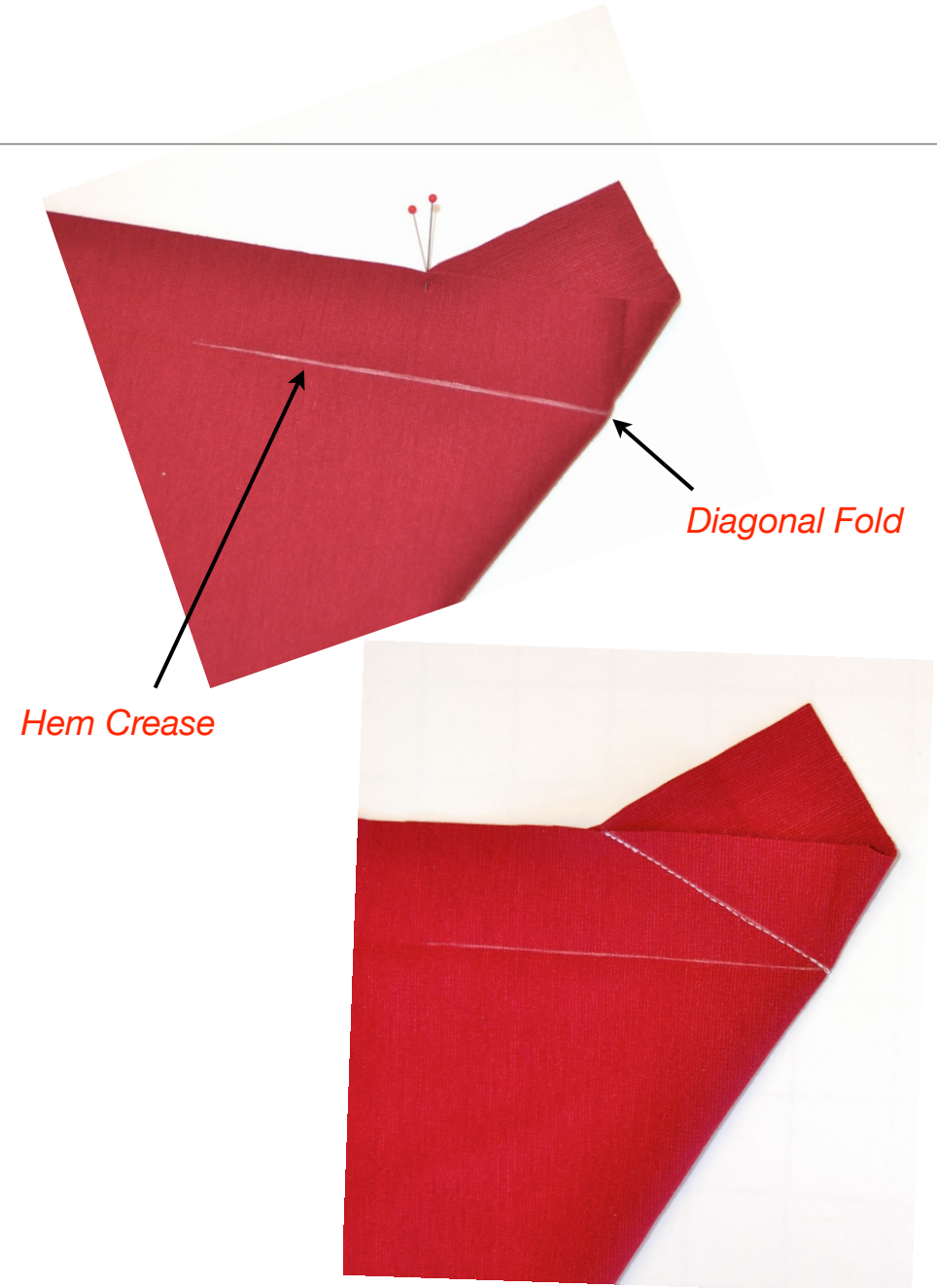


*Leave both hems pressed  
Make an "X" with the pins.*



# Miter the Corners

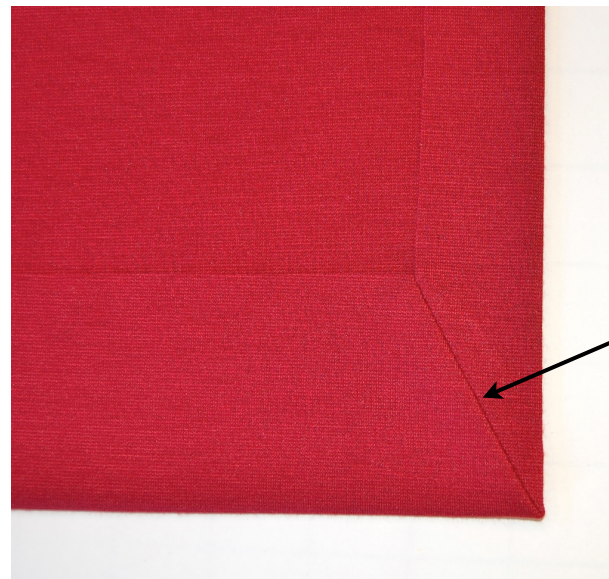
- Open out the hem folds. With right sides together, match the pins at the hem edges.
- Chalk mark from the pins to the fold where the hem crease meets at the diagonal fold.
- Before trimming the seam, turn the corner right sides out and check the miter.



# Miter the Corners

---

- Trim the seam to about  $\frac{3}{8}$ ".
- Press the seam open over a point presser.
- Turn the hem to the wrong side and lightly press the miter in place.



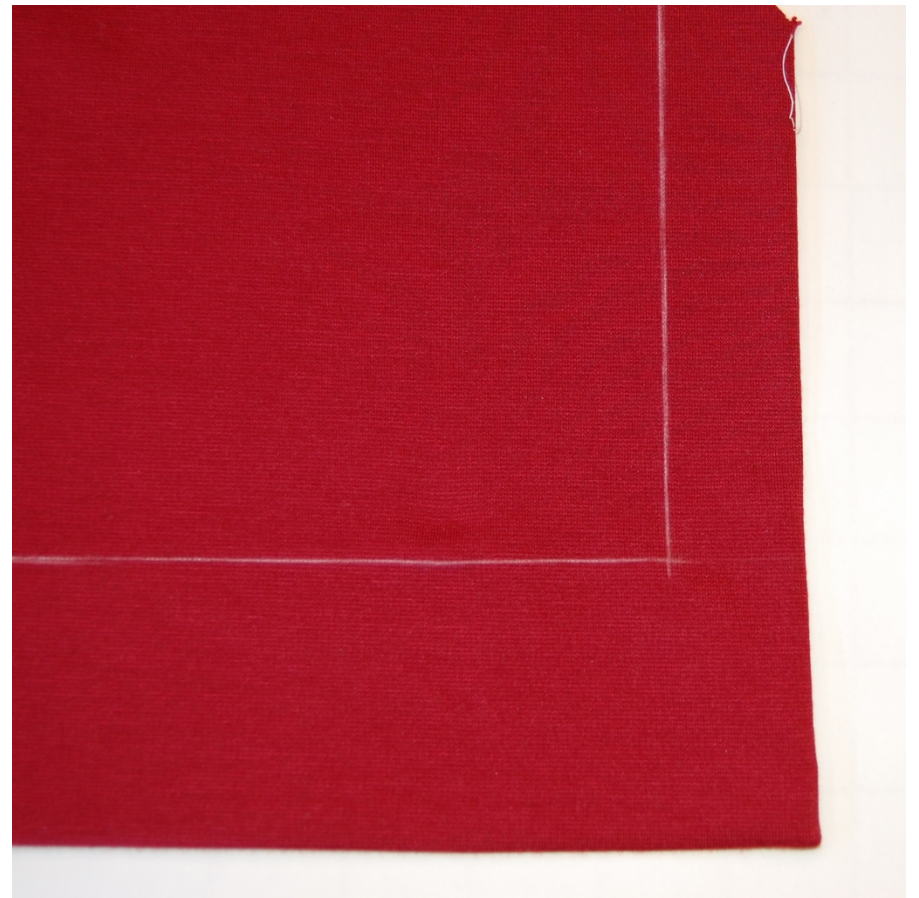
*Perfect Miter*

# Hem the Back

---

- Chalk mark the bottom and side vent hems on the right side of the fabric.
- Using a walking foot, topstitch the hems in a continuous stitching line, from one side vent hem, along the bottom hem and back up the other side vent.

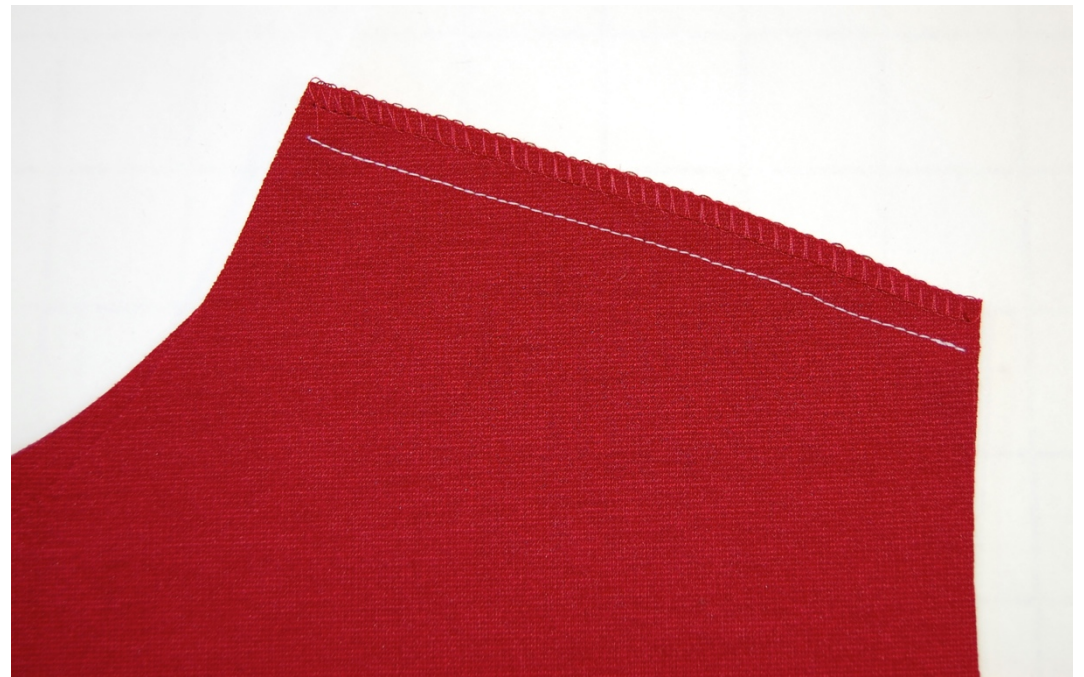
*Do not lengthen your stitch when topstitching. That only appears in poor quality ready-to-wear.*



# Sew the Shoulder Seams

---

- With right sides together, sew the shoulder seams.
- Serge the seams together for a more finished look. This is optional since knit fabrics do not ravel.
- Press the seams toward the back.



*Serge finishing adds a high-quality look to your knit garments, but it is an optional step.*

# Construct the Cowl Collar

---

- With right sides together, sew the short ends of the cowl together.
- Press the seam open over a sleeve board.



*Pressing over a sleeve board prevents pressing the wrong areas.*



# Construct the Cowl Collar

---

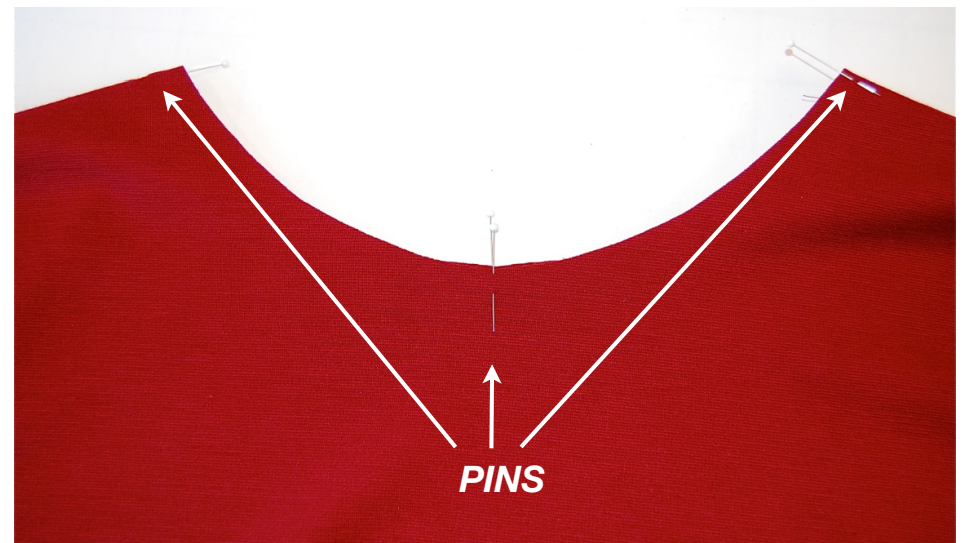
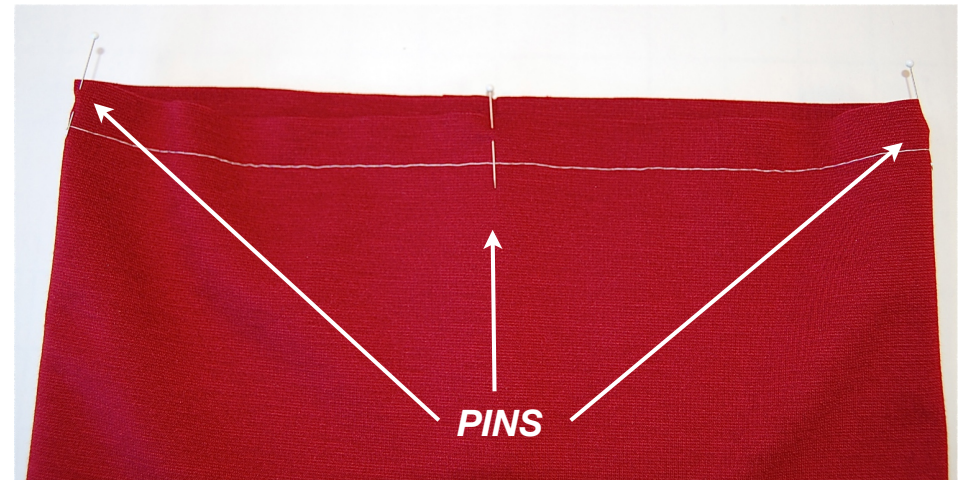
- Fold the cowl in half with the wrong sides together.
- Baste the raw edges together along the seam line.
- Do not press the folded edge. Keeping it soft helps it to scrunch correctly when wearing.

*Baste exactly on the seam line. This precision will come in handy later.*



# Construct the Cowl Collar

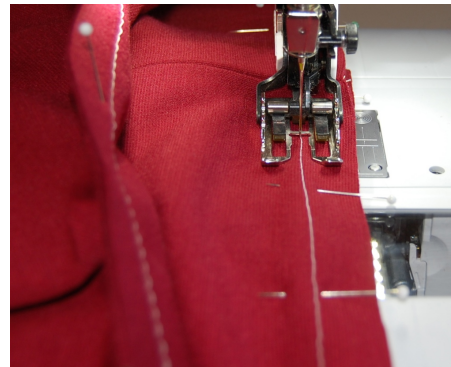
- Divide the neck opening of the cowl into quarters and mark with pins or clip into the seam allowance.
- Divide the neck opening of the garment into quarters and mark.



# Construct the Cowl Collar

---

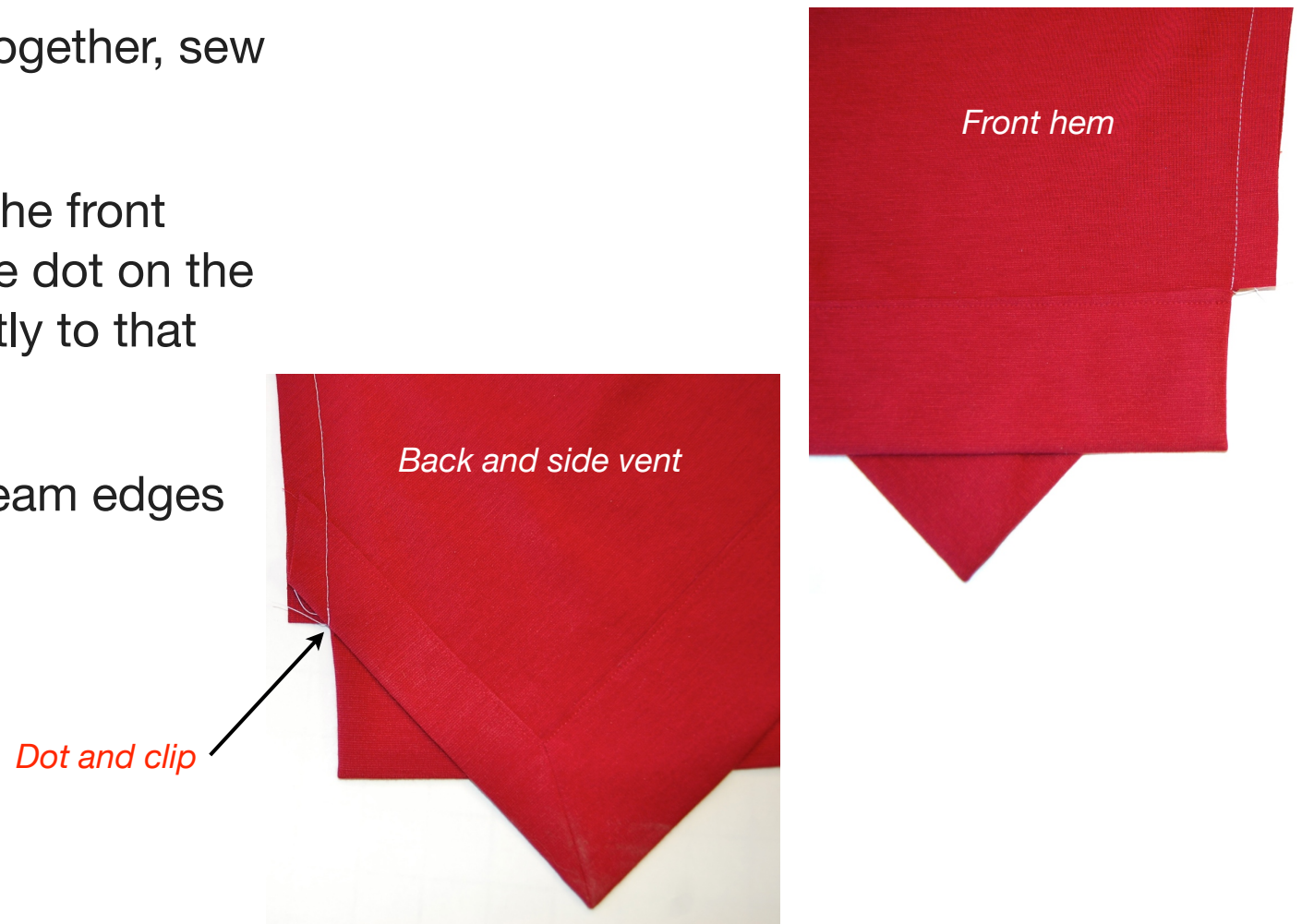
- With right sides together, pin the cowl to the garment at each quarter mark.
- Use the previous basting stitch as a guide to sew the cowl to the garment.
- Use a walking foot to prevent the fabric from shifting.
- Press the seam toward the garment over a sleeve board.





# Sew the Side Seams

- With right sides together, sew the side seams.
- Match the top of the front hem at the clip to the dot on the side vent. Sew exactly to that point.
- Serge finish the seam edges together (optional).



# Sew the Side Seams

---

- Using a sleeve board, press the seam toward the back.



*Sleeve Board*



# Sew the Sleeves

---

- Cut ½" off the bottom of the sleeve hem allowance leaving a finished hem allowance of 2½".
- Apply Fusi-Web to the bottom of the sleeve hem on the wrong side of the fabric.
- Serge finish the side edges of the sleeves (optional).
- Stitch long machine stitches between the front and back notches to ease the sleeve cap.
- With right sides together, sew the sleeve seam, ending at the dot.



*Leave the paper covering on the Fusi-Web until it is time to fuse the hem in place.*

# Sew the Sleeves

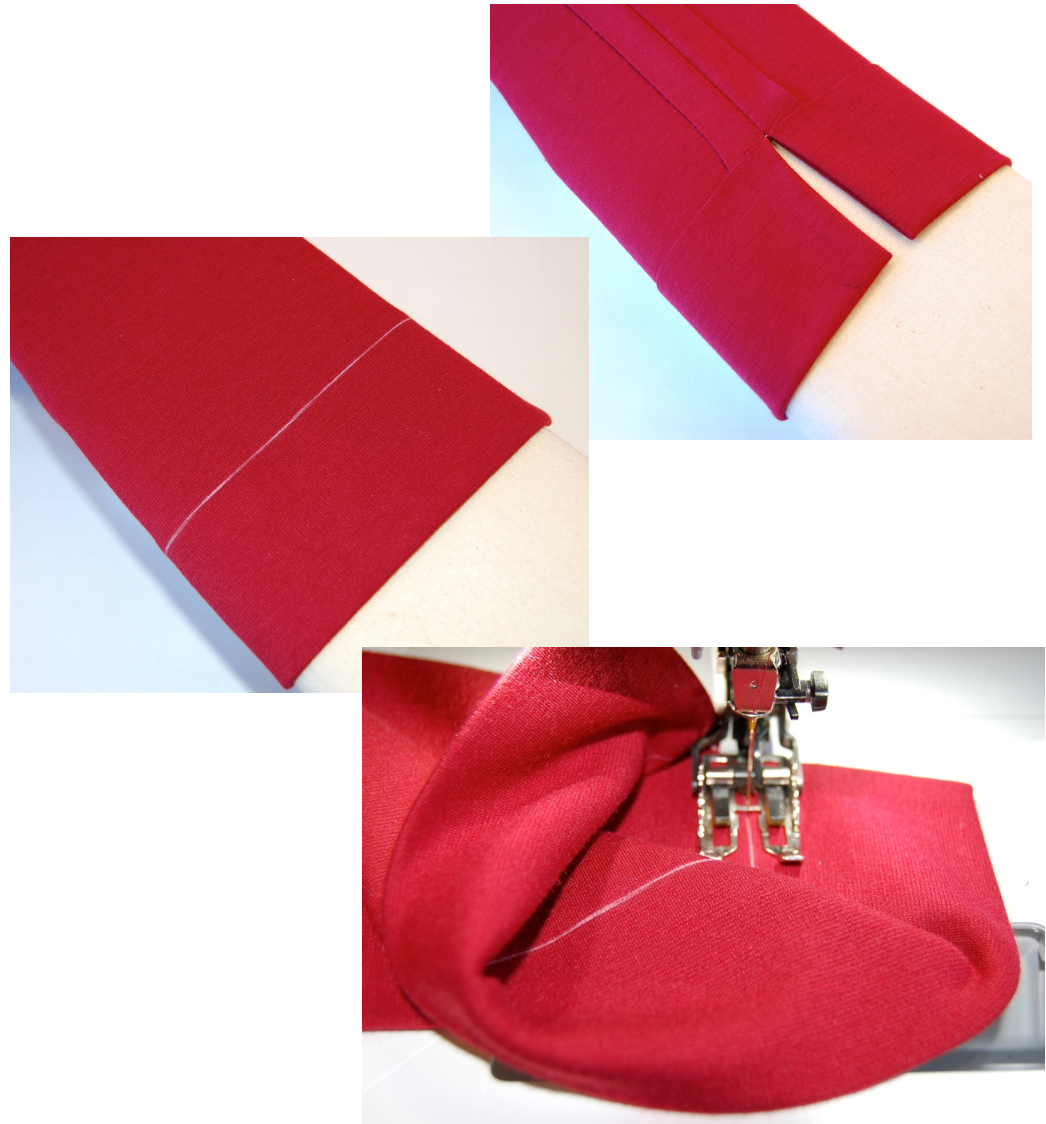
- With the sleeve turned inside out, turn the hem edges right sides together at the vent opening, bringing the hem edges to the dot.
- Stitch each vent edge on the seam line, stopping exactly at the dot.
- Press each seam open over a point presser.



# Sew the Sleeves

---

- Turn the vent to the right side and press fusing the hem in place. Use a sleeve board.
- Turn the sleeve to the right side. Chalk mark the topstitching line on the right side of the fabric.
- Topstitch the hem in place using a walking foot.



# Insert the Sleeves

---

- Follow the instructions in the guide sheet to insert the sleeves in the garment.
- Note that the sleeve and garment seams do not match.
- The sleeve seam matches the dot on the garment and the dot on the sleeve underarm matches the garment side seam.
- Serge finish the raw edges together (optional).



# Sew Confident!

CLASS IN A FLASH

## Liberty Cowl Top By Linda Lee

THE SEWING WORKSHOP

