



Bamboo Pullover

VAULT

SERIES 13 | Sew Confident! 2024

MATERIALS LIST

- [Bamboo Top](#) digital pattern
- Sweater knits, fashion fleece, French terry, novelty knits
 - 60" wide - 2 ½ yards
- Polyester thread
- Isacord thread for serging
- Knit stay tape
- Fusi-Web
- Walking foot
- Coverstitch feature/machine (optional)

You will need a sewing machine that has been cleaned and oiled and is in good condition. If your machine also embroiders and has a 9mm throat plate, you may want to invest in a 5mm-wide throat plate. If you have the even feed feature on your machine, engage it. If not, add a walking foot, if possible. We recommend a serger for seam finishes.

Purchase the Pattern

Purchase the digital Bamboo Top pattern. You can now select for us to print the pattern for you from our in-house printing service.

Fabric Preparation

Pre-wash a small sample of the fabric. If you're happy with the result, wash your yardage.

Pattern Pieces Needed

- 4 Back
- 6 Front
- 8 Upper Sleeve
- 9 Under Sleeve
- Neck Binding - make new pattern piece

Seam and Hem Finish Options

1. If the fabric does not ravel, finishing the edges may be unnecessary.
2. Sew the seam and finish the raw edges together using a 3-thread stitch formation on your serger.
3. Serge finish the raw edge of a hem (or leave raw). Apply a strip of Fusi-Web to the wrong side of the hem. Turn up the hem allowance ($\frac{5}{8}$ " or $\frac{3}{4}$ " depending on the weight of the knit) and press. Open out and remove the paper covering on the Fusi-Web. Re-press to fuse the hem in place. Topstitch using a single line of stitching or coverstitch the hem.

See Resources below for other seam and hem options.

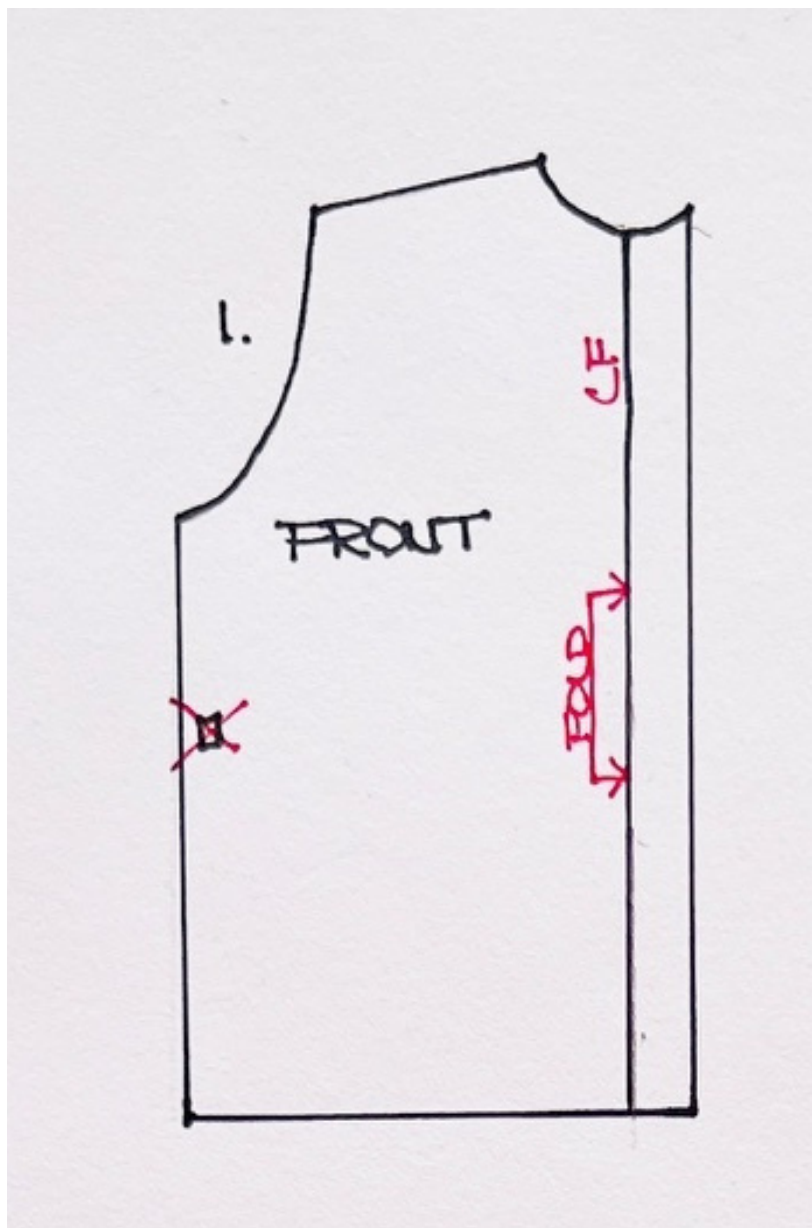
Resources:

- Sew a Knit Wardrobe Tutorial - sewingworkshop.com
- *Sewing Knits from Fit to Finish* book - sewingworkshop.com
- The Ultimate Guide to Sewing Knits - craftsy.com

Lengthen or shorten garment as desired.

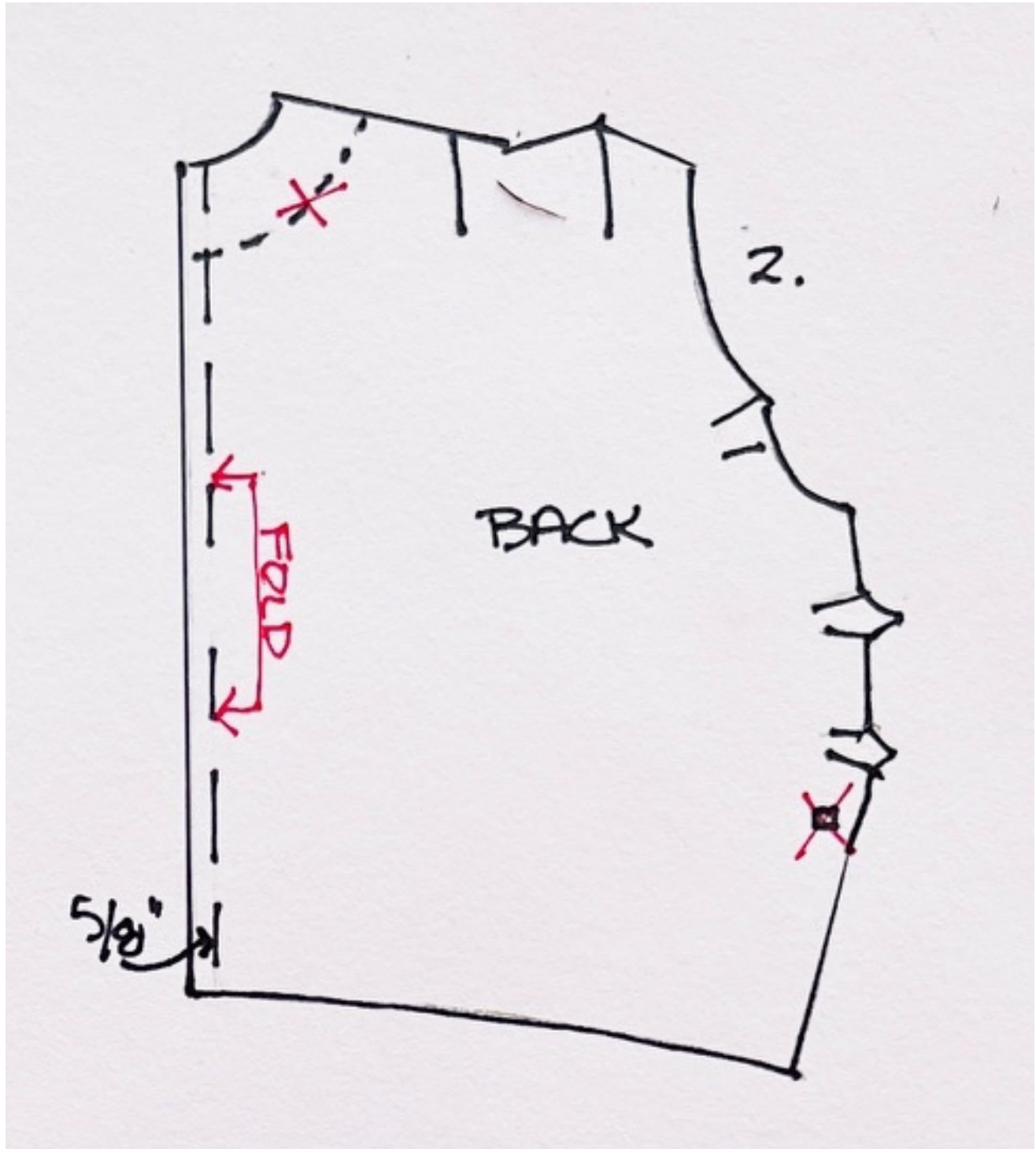
Front

Use the center front line to indicate cutting a complete Front on the fold. Delete the square marking and all button and buttonhole markings.



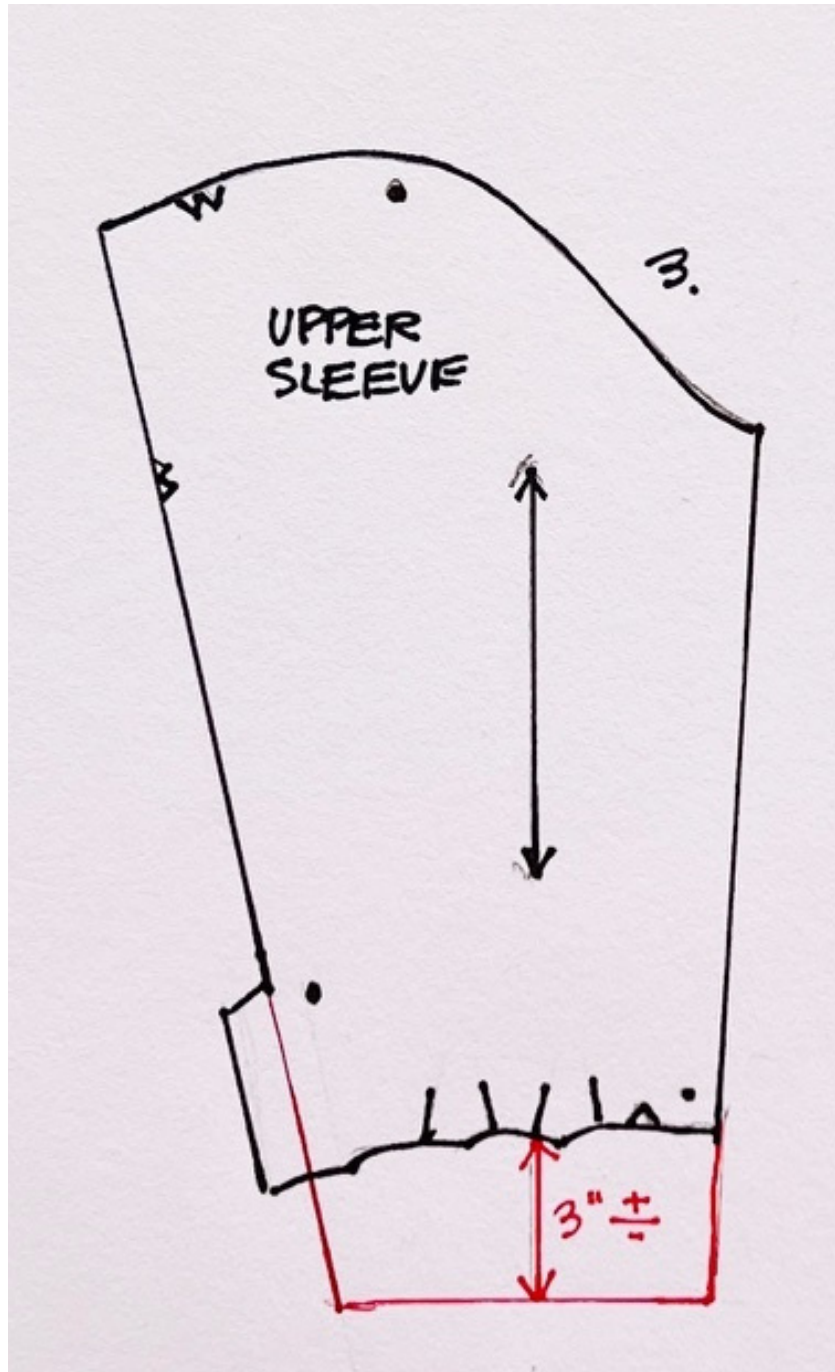
Back

Use the $\frac{5}{8}$ " center back seamline to indicate cutting a complete Back piece on the fold. The shoulder tuck and side pleats are used in this garment. Delete square marking and neckline topstitching line.



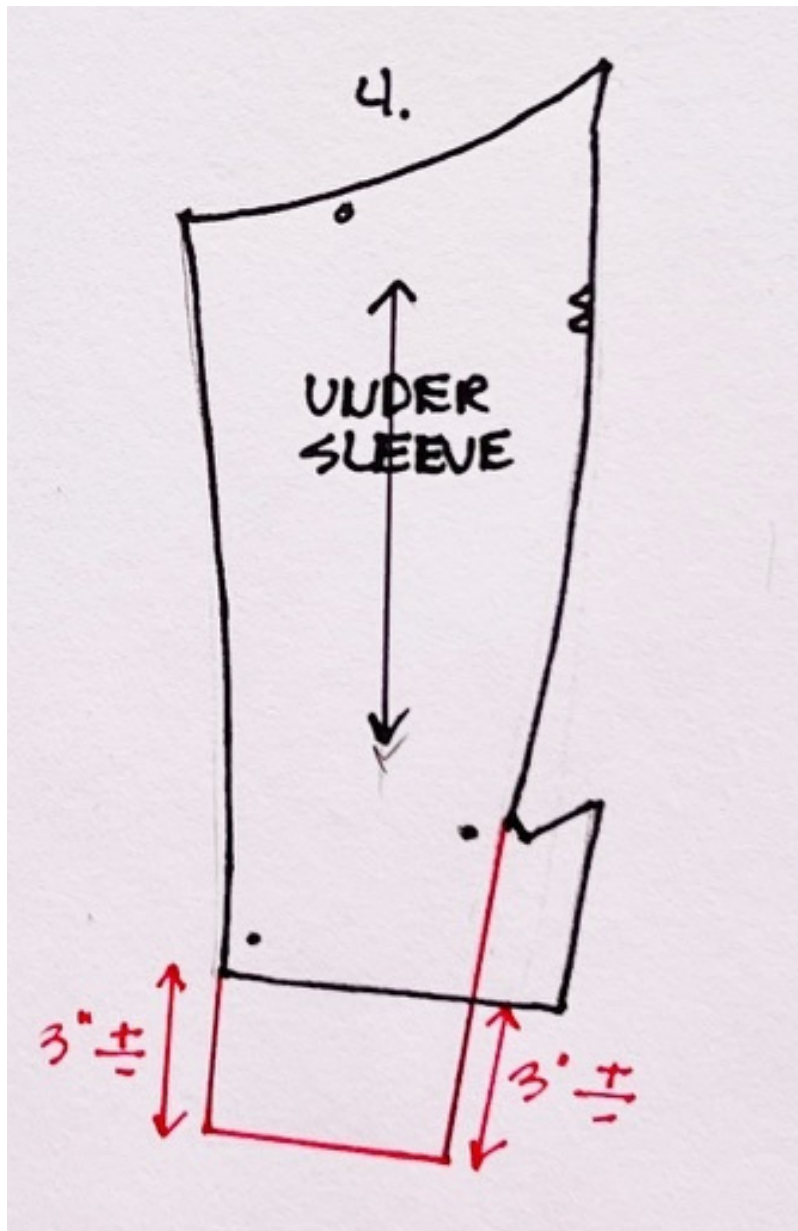
Upper Sleeve

Since the Cuff is eliminated, lengthen the Sleeve to your desired finished length plus a $\frac{5}{8}$ " seam allowance. The sample garment was lengthened 3" and includes the hem allowance. Lengthen it at the bottom rather than using the lengthen and shorten line so that the circumference at the wrist is smaller than the original bottom circumference. Continue to draw the cutting lines to the bottom of the Sleeve, deleting the vent opening. Draw the bottom line perpendicular to the straight of grain line. Delete the vent extension and the pleats.



Under Sleeve

Extend each seam cutting line 3" (plus or minus) at the bottom. Connect these lines with a horizontal line. Check the length of each seam and compare to the Upper Sleeve seams. Lengthen or shorten as needed. Delete the vent extension.



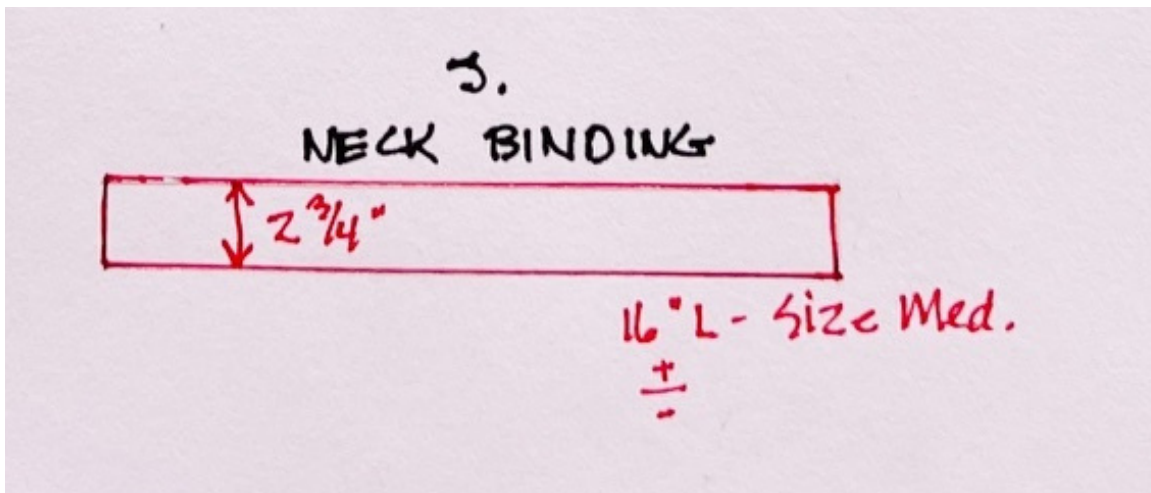
Neck Binding

To make a pattern piece, measure the finished (subtract seam allowances) circumference of the neck opening along the seamlines of the Front and Back. Round up to the nearest $\frac{1}{4}$ ".

Divide this number by .875 to determine the length of the Neck Binding. Do not add seam allowance to the length.

The finished neck binding width is $\frac{3}{4}$ " on this pullover. To determine the width of the pattern piece, add $\frac{3}{4}$ + $\frac{3}{4}$ " + $\frac{5}{8}$ " + $\frac{5}{8}$ " + (2 seam allowances) for a total of $2\frac{3}{4}$ ".

The size of the Neck Binding pattern piece in the sample garment in a size medium is 16" long X $2\frac{3}{4}$ " wide.



When sewing the ends together, use a $\frac{1}{4}$ " seam allowance.

Neck Bindings are usually cut on the crossgrain but can be cut in any direction when using a particular texture or stripe.

ORDER OF CONSTRUCTION

1. To prevent the shoulders from stretching out when using a knit fabric with a lot of stretch, use a strip of knit stay tape centered over the shoulder seamline on the Back only.
2. Following the instructions in the guide sheet, construct the shoulder tucks and the side seam/armscye pleats on the Back.
3. Sew the Front to the Back at the shoulder seams.
4. Install the Neck Binding.
See Resources below for binding technique
5. Sew the side seams.
6. Sew a line of machine basting stitches between notches on the Sleeve cap on the Upper Sleeve.
7. Sew the two Sleeve seams. Insert the Sleeves.
8. Prepare and sew the bottom hem and the Sleeve hems.