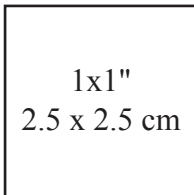


L

M

S

Sewing Workshop
Déjà Vu Wrap



Did you print at the correct scale?
Measure this box to check.
DO NOT SCALE WHEN PRINTING.
Remember to print at 100%
or Actual Size, not Fit to Page.

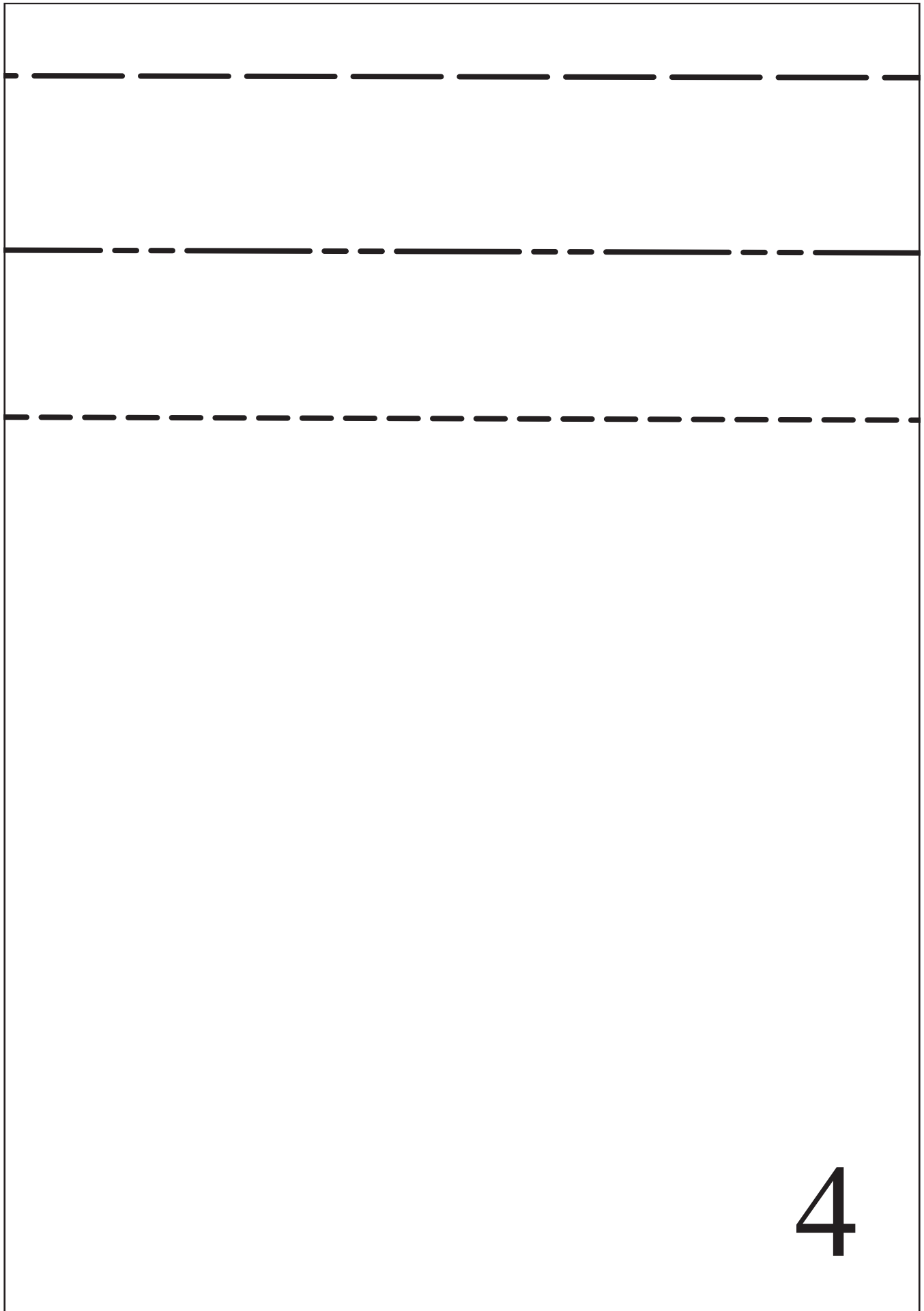
**SEE PAGE 37 FOR
ASSEMBLY GUIDE**

BACK PLEAT

ATTACH WRAP PATTERN PIECE IA TO WRAP
PATTERN PIECE IB AT THIS LINE

ATTACH WRAP PATTERN PIECE IA TO WRAP
PATTERN PIECE IB AT THIS LINE

ATTACH WRAP PATTERN PIECE IA TO WRAP
PATTERN PIECE IB AT THIS LINE



5

○ BLUE

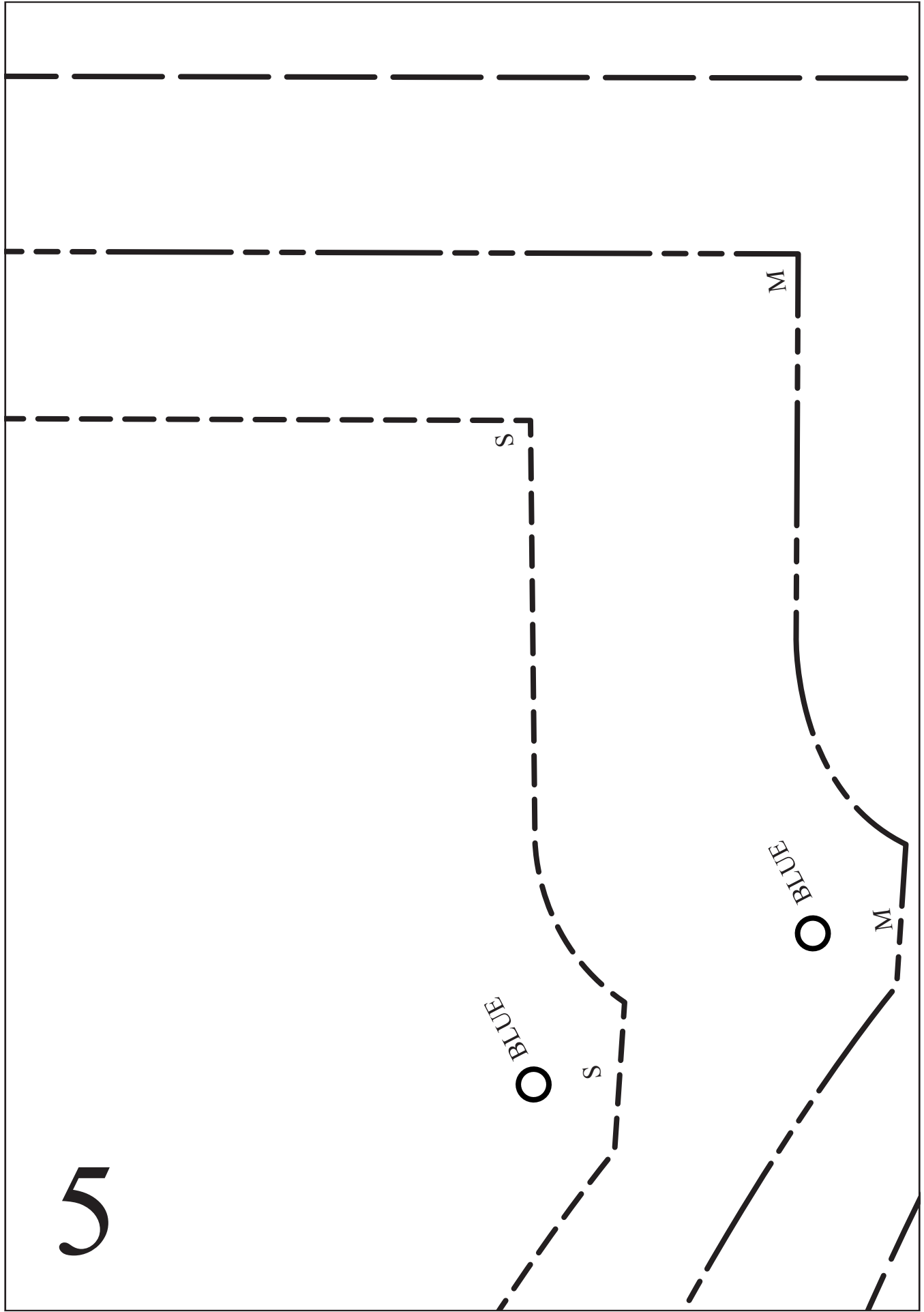
○ BLUE

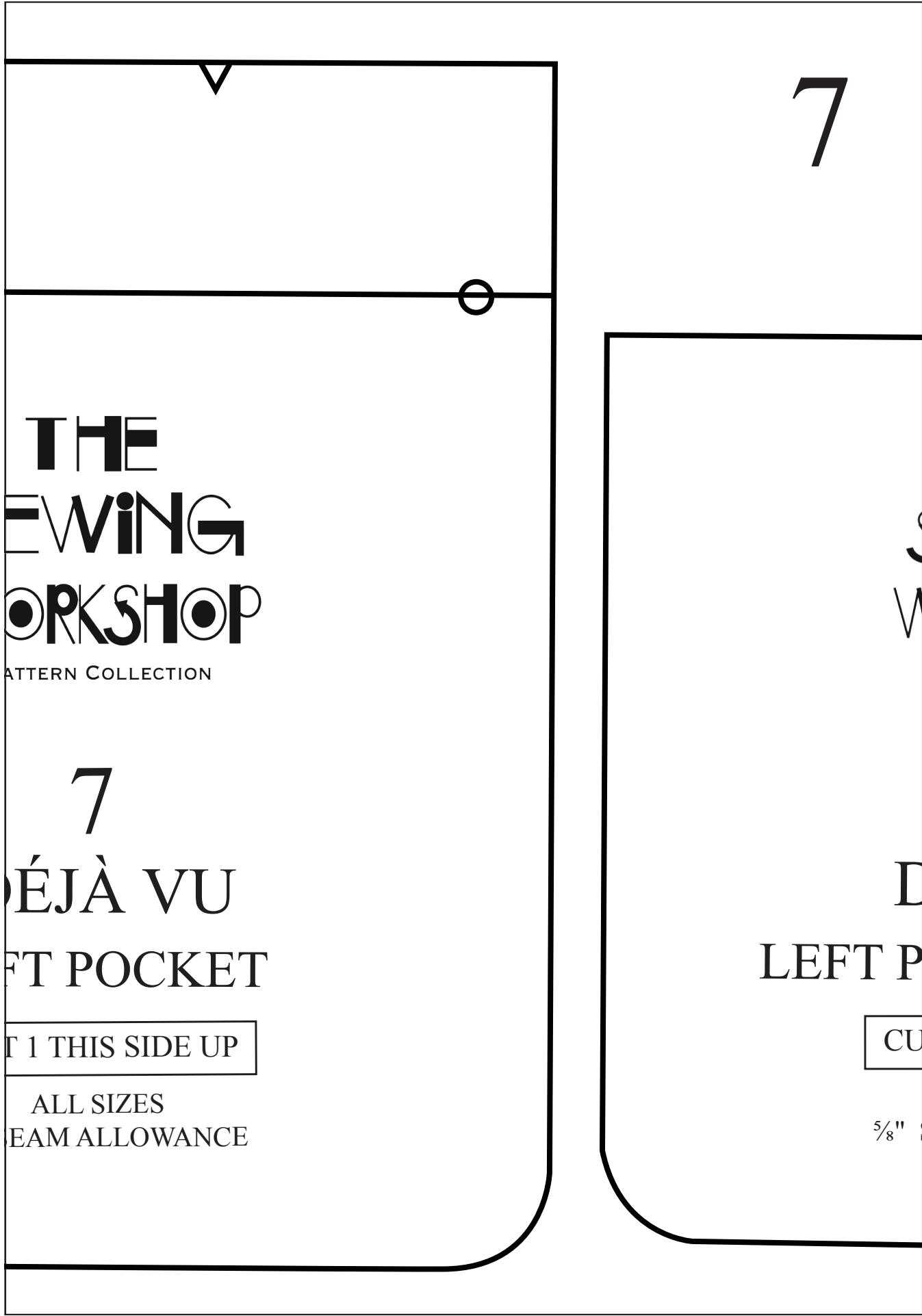
S

S

M

M





7

**THE
EWING
WORKSHOP**
PATTERN COLLECTION

7
DÉJÀ VU
RIGHT POCKET

PUT 1 THIS SIDE UP

ALL SIZES
SEAM ALLOWANCE

S
W

D
LEFT P

CU

5/8"

8



THE
SEWING
WORKSHOP
PATTERN COLLECTION

9
DÉJÀ VU
POCKET LINING

PUT 1 THIS SIDE UP

ALL SIZES
SEAM ALLOWANCE

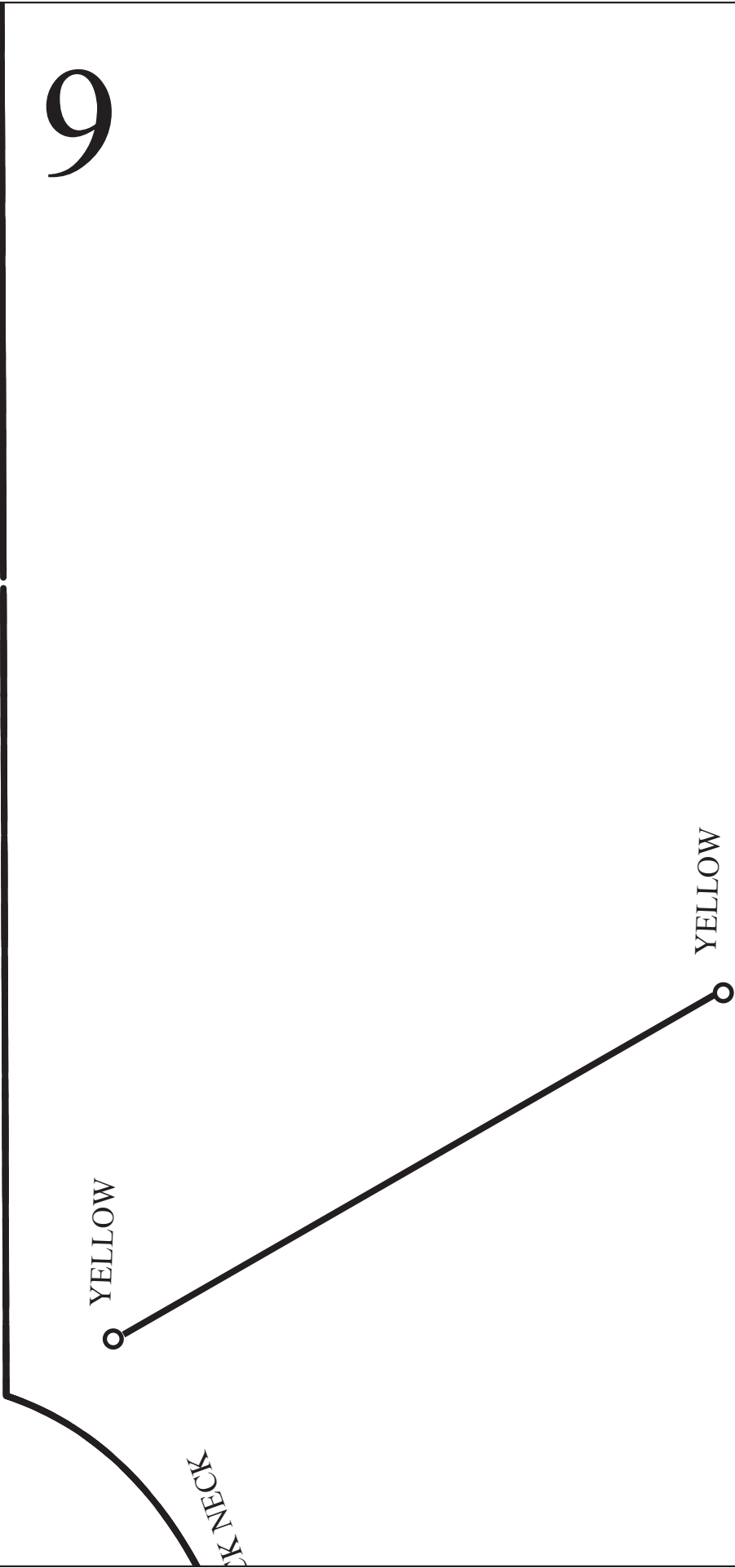


9

YELLOW

YELLOW

CK
NECK



10

F
ING
SHOP
COLLECTION
A

U WRAP

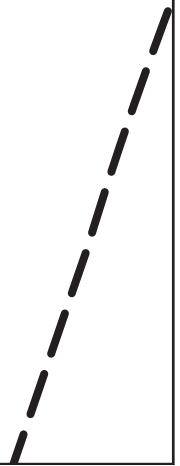
IS SIDE UP

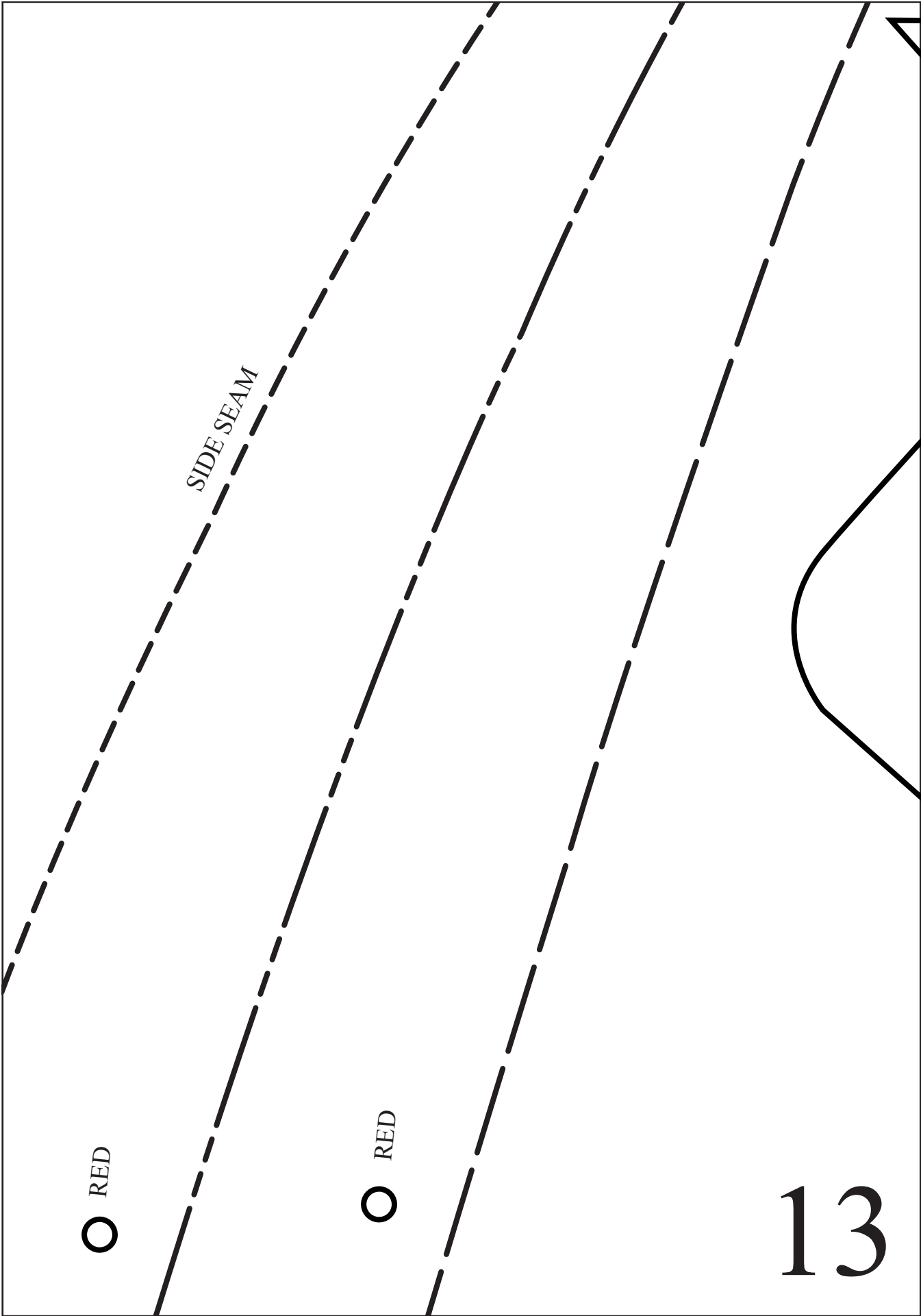
SIZES
ALLOWANCE

11

12

○ RED



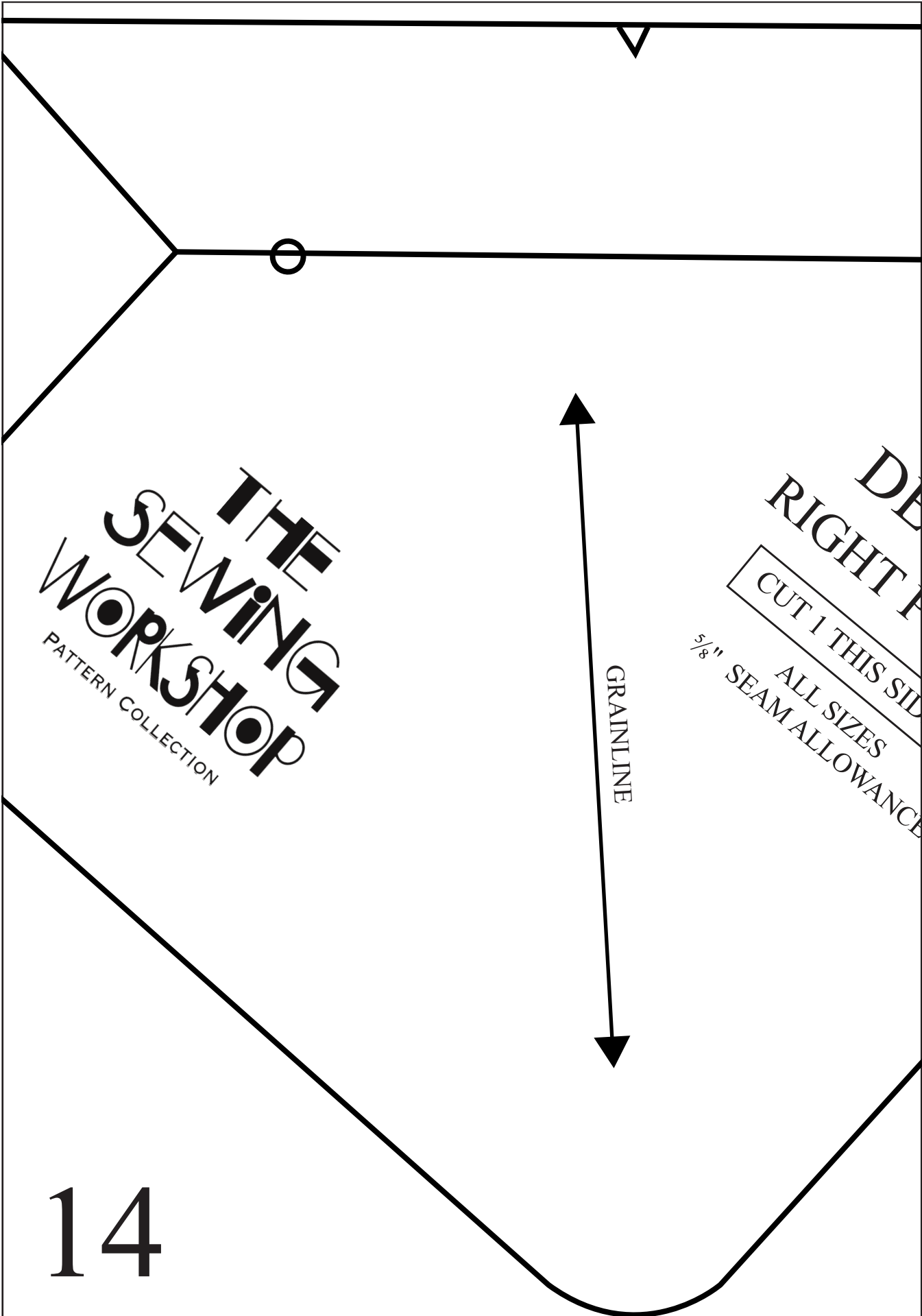


SIDE SEAM

○ RED

○ RED

13



THE
SEWING
WORKSHOP
PATTERN COLLECTION

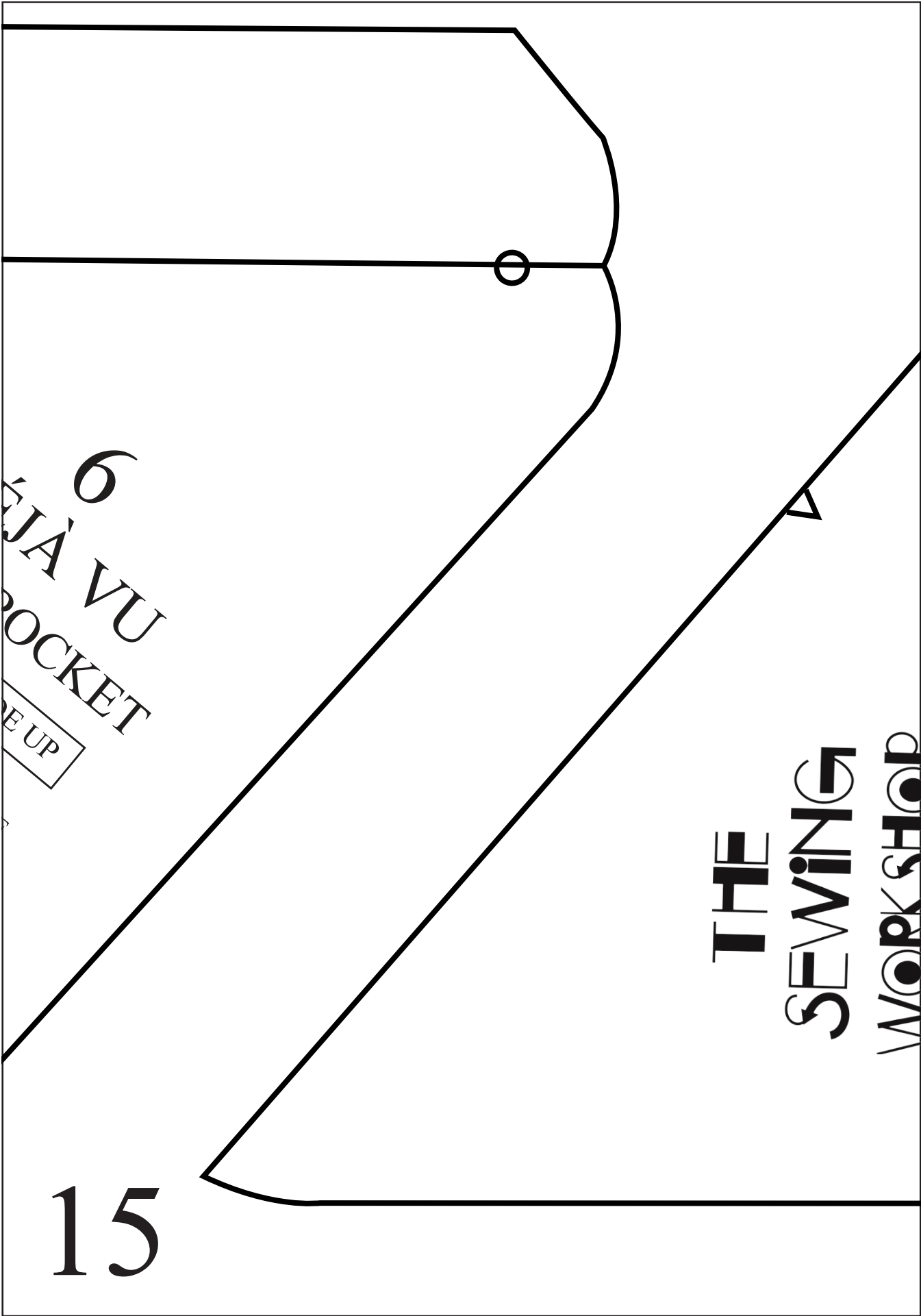
DE
RIGHT P

CUT 1 THIS SID

ALL SIZES
5/8" SEAM ALLOWANCE

GRAINLINE

14



6
KJÄ VU
POCKET

E UP

THE
SEWING
WORKSHOP

15

GRAINLINE

8

DÉJÀ VU

RIGHT POCKET LINING

CUT 1 THIS SIDE UP

ALL SIZES

$\frac{5}{8}$ " SEAM ALLOWANCE

17

BAC



18

**THE
SEW
WORK**
PATTERN CO

1

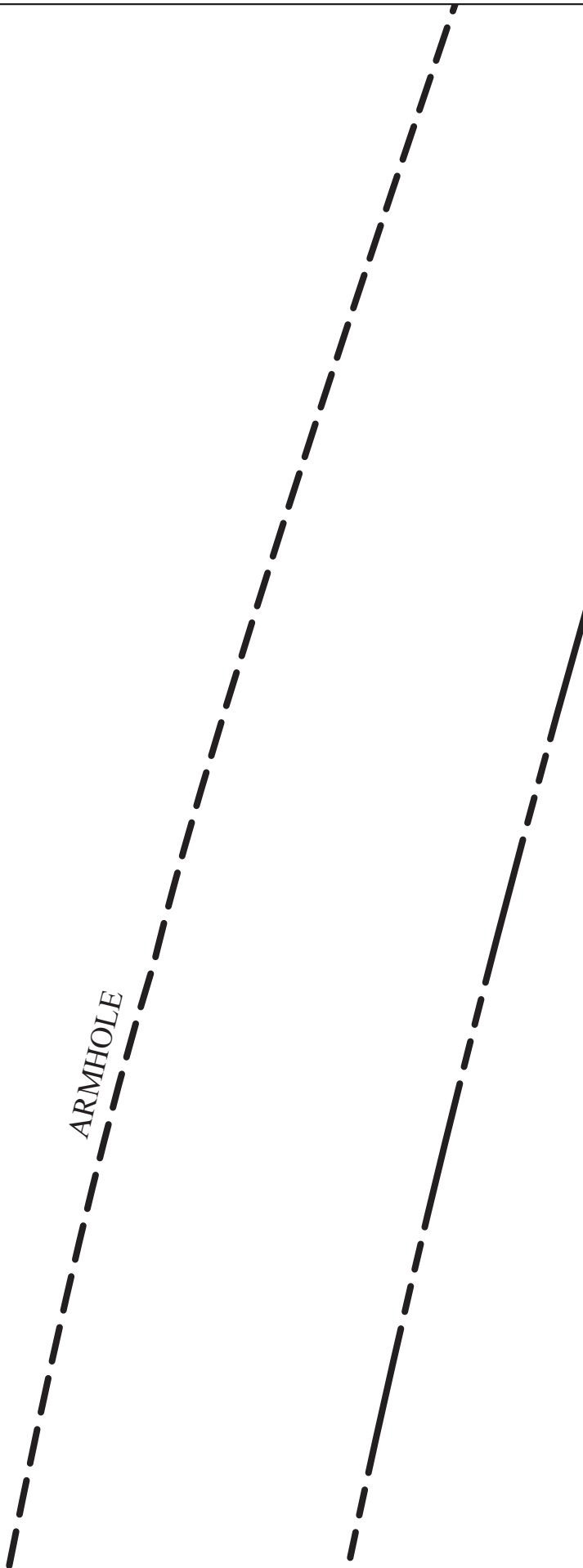
DÉJÀ V

CUT 1 TH

ALI
5/8" SEAM

20

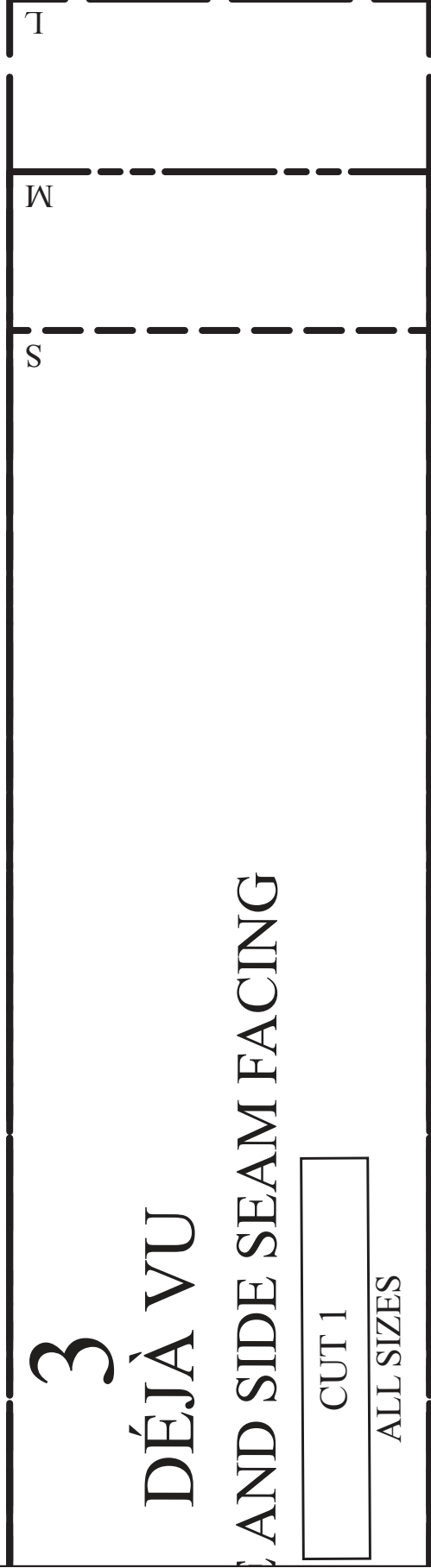
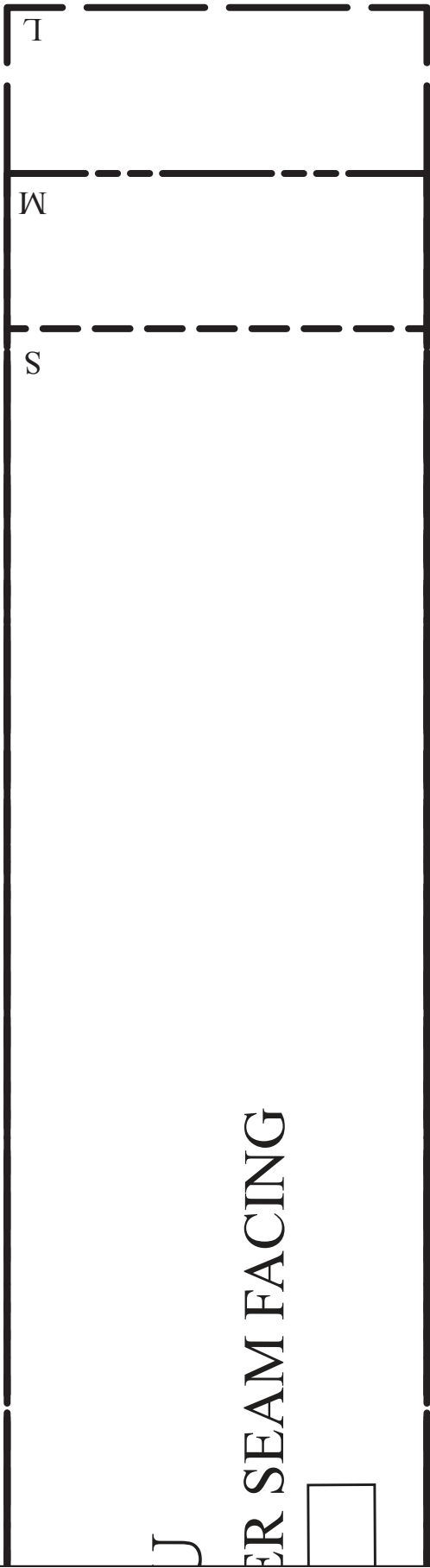
ARMHOLE



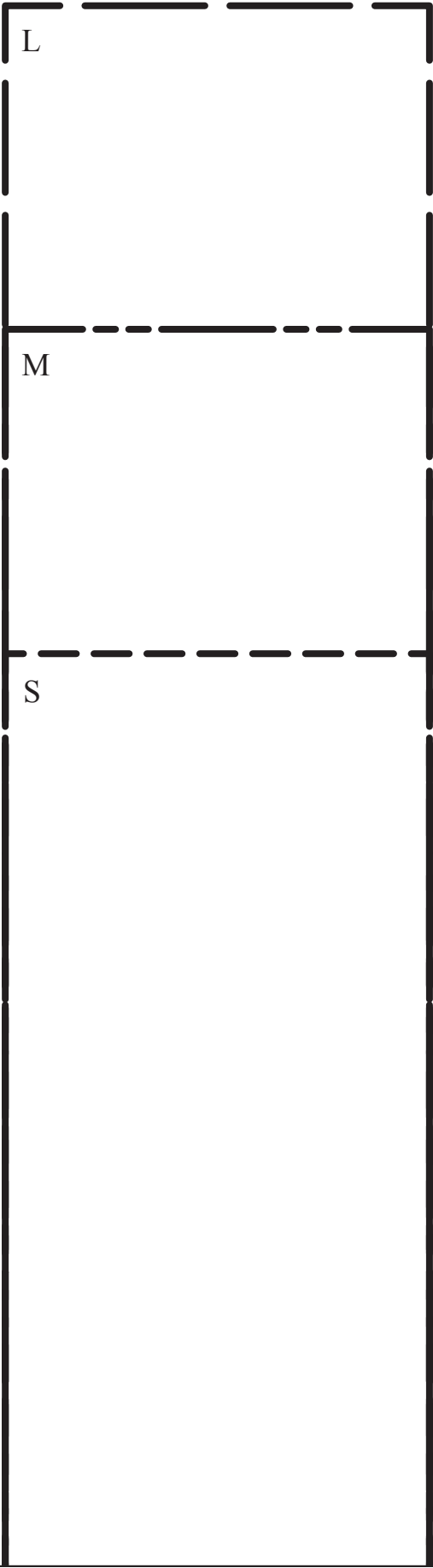
A page with a dashed line and the number 21. The dashed line is a single vertical line that runs from the top to the bottom of the page, positioned on the left side. The number 21 is located in the lower-left quadrant of the page, to the right of the dashed line. The page is otherwise blank.

21

22



23



24

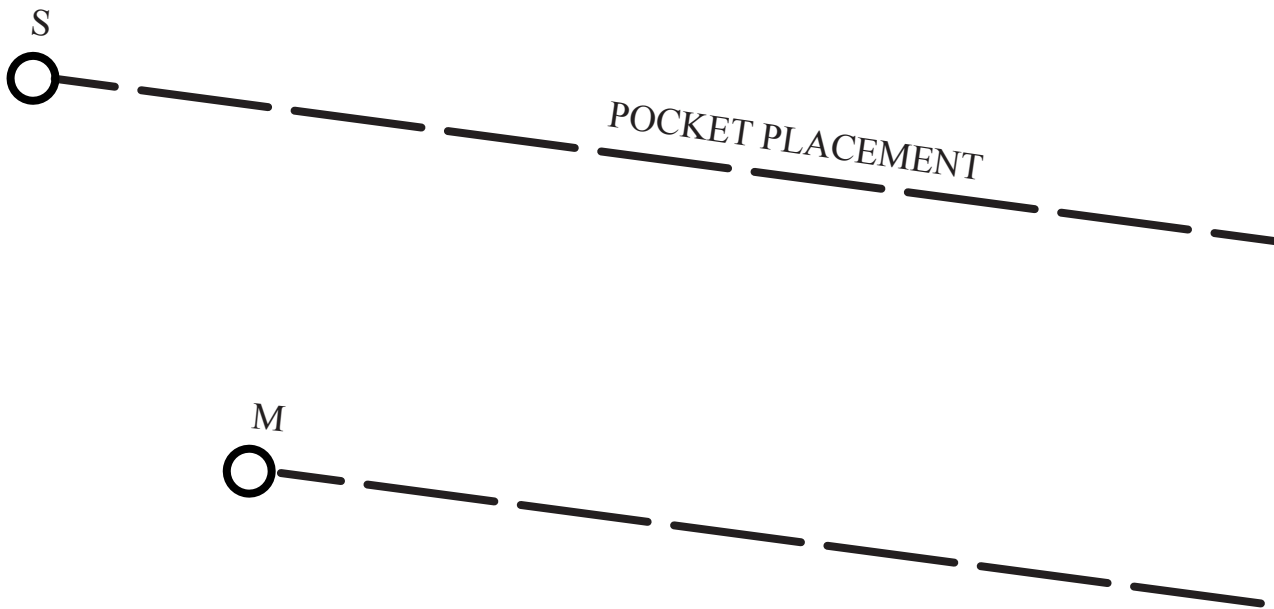
25

FRONT

GRAINLINE

LEFT FRONT

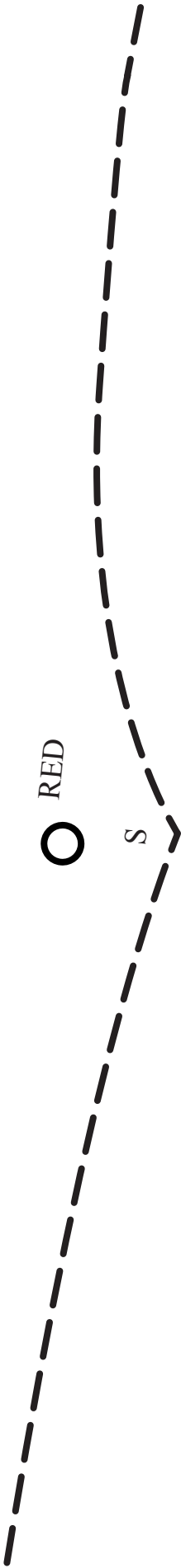
26



27



28



O RED

L



30

2

DÉJÀ VU
ARMHOLE AND SHOULDER

CUT 1

ALL SIZES



GRAINLINE



ARMHOLE

5
DÉJÀ VU
FRONT BAND

CUT 1

ALL SIZES

33



S



M

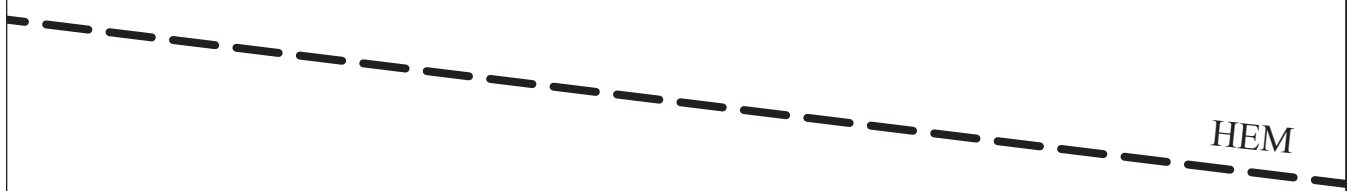


34

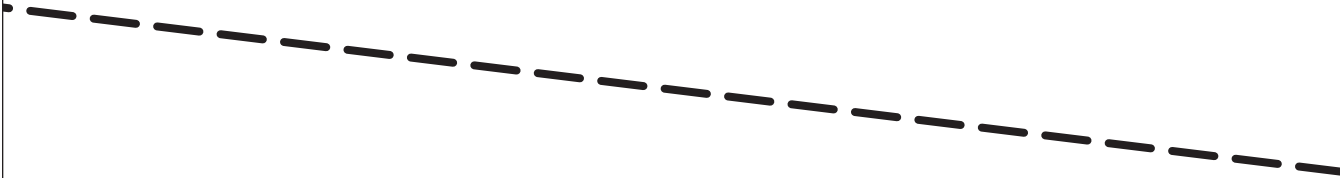
L



HEM



35



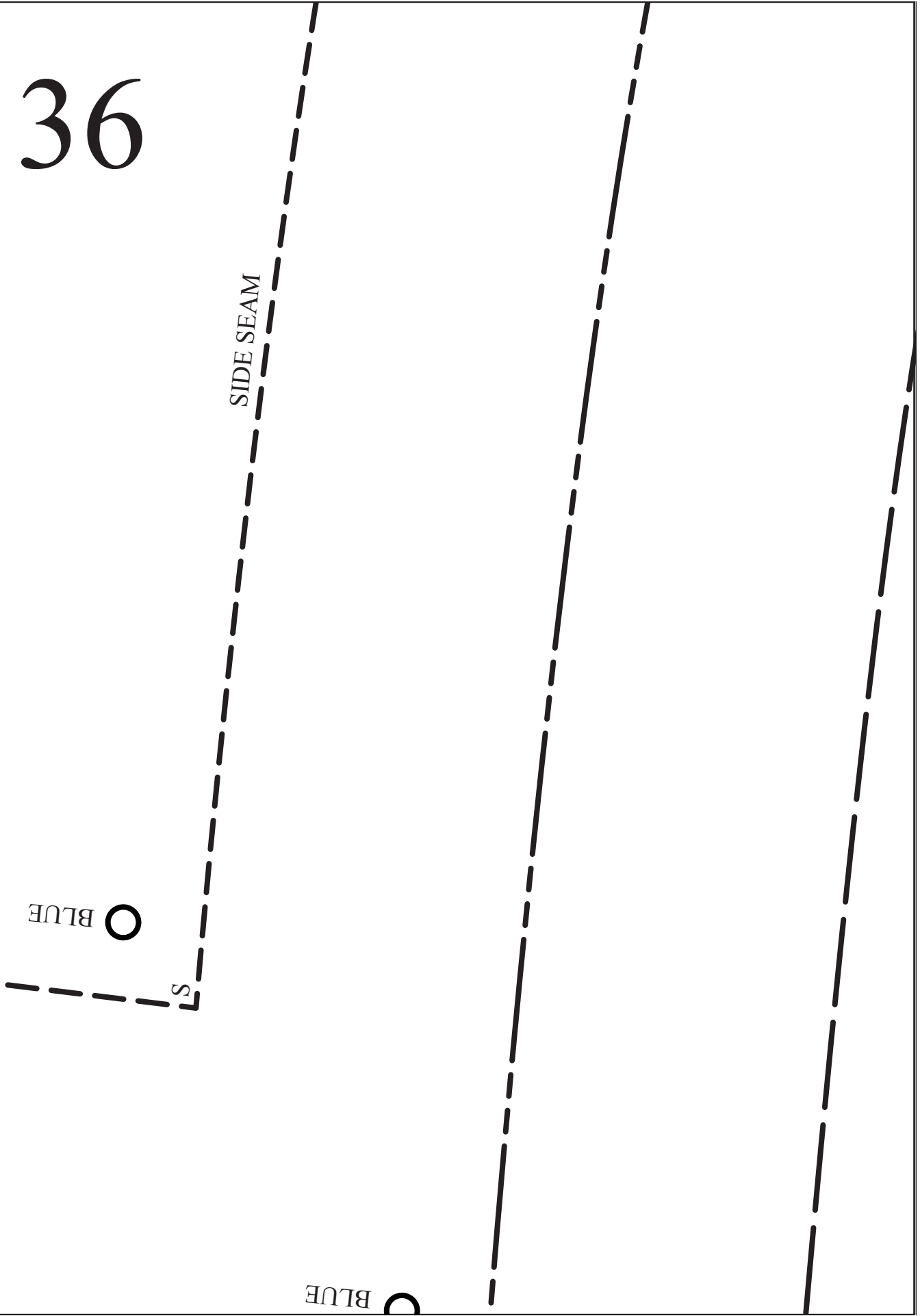
36

SIDE SEAM

○ BLUE

S

○ BLUE



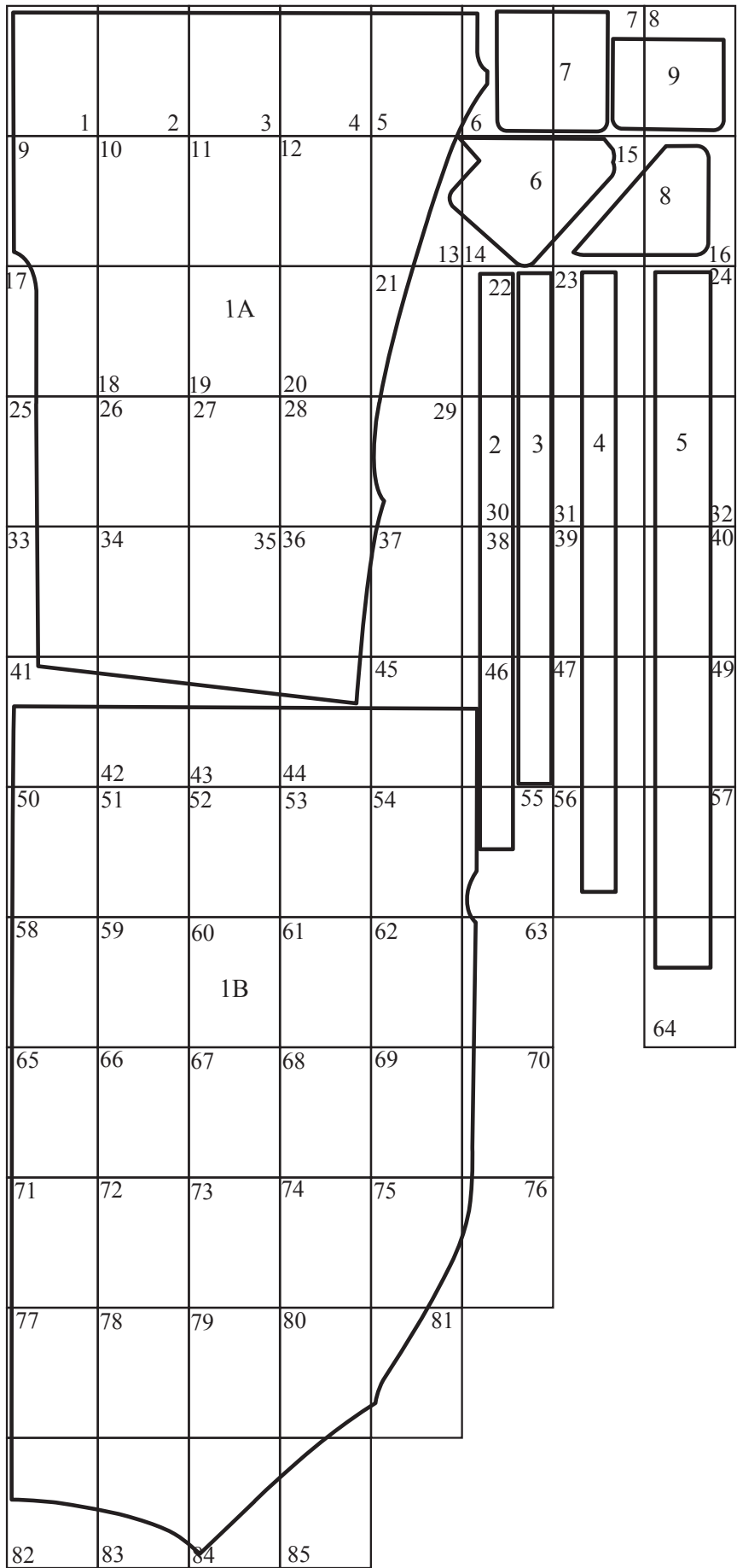
37

SEWING WORKSHOP
DÉJÀ VU WRAP ASSEMBLY GUIDE

Pattern with pdf pages mapped
Finished box = 56" x 120"

Note: Row 8, Column 7 is open;
Rows 9-10, Columns 7-8 are open;
Row 11, Columns 6-8 are open;
Row 12, Columns 5-8 are open.

Note: Tape pages together according to
map on this page



38

GRAINLINE



THE
VING
KSHOP
COLLECTION

4

DÉJÀ VU WRAP

HEM FACING

CUT 1 ON FOLD

ALL SIZES

THE

SEWING

WORKSHOP

PATTERN COLLECTION

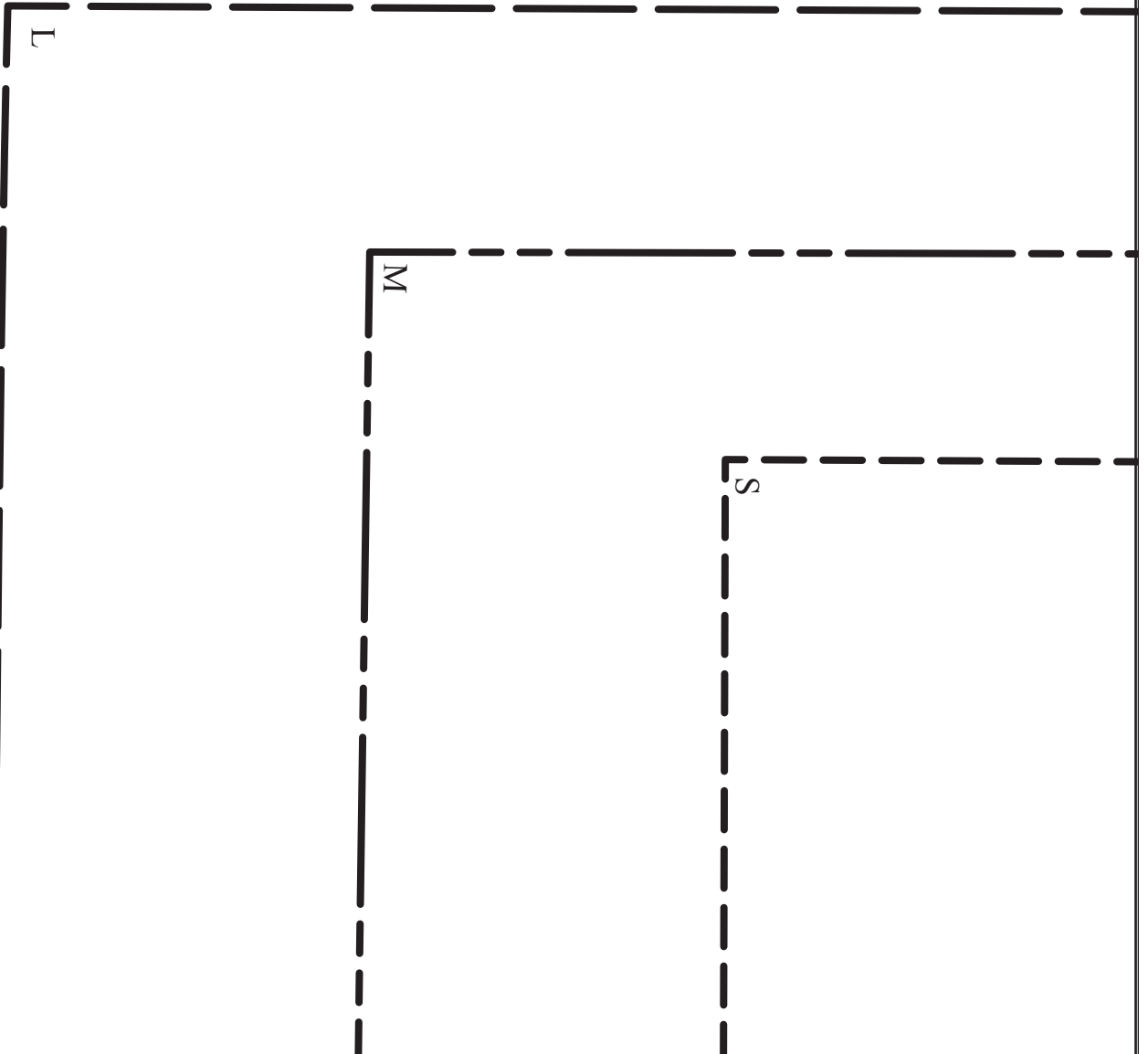
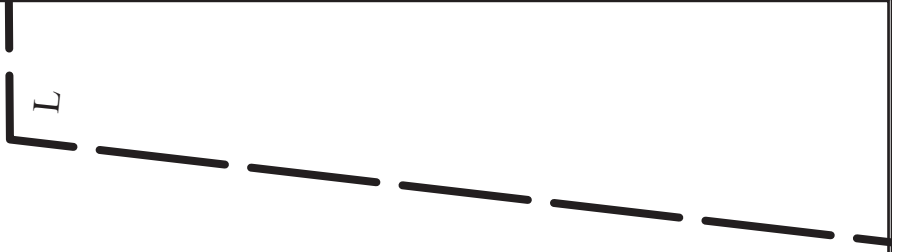
39

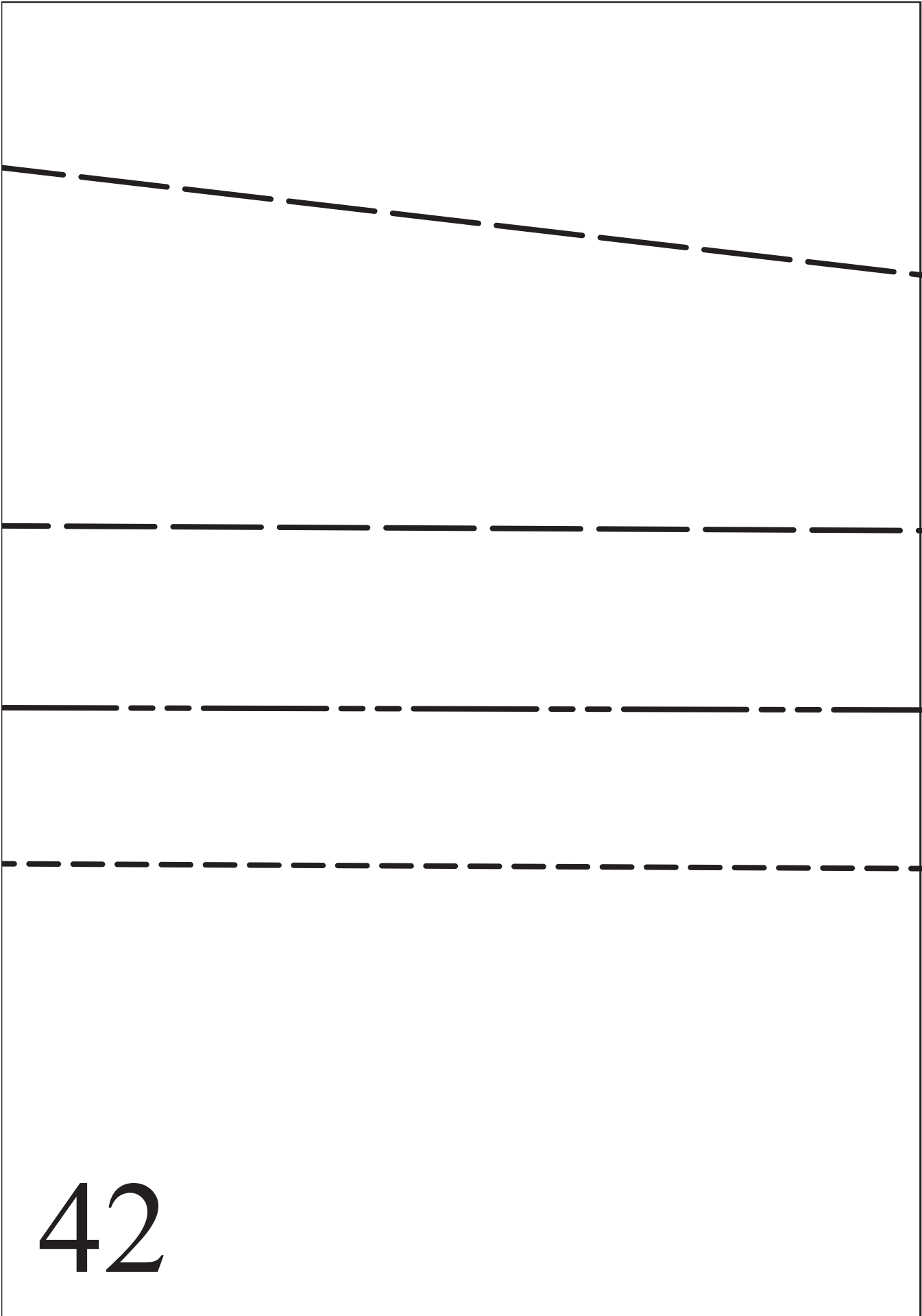
SE
WCO
PAT

40

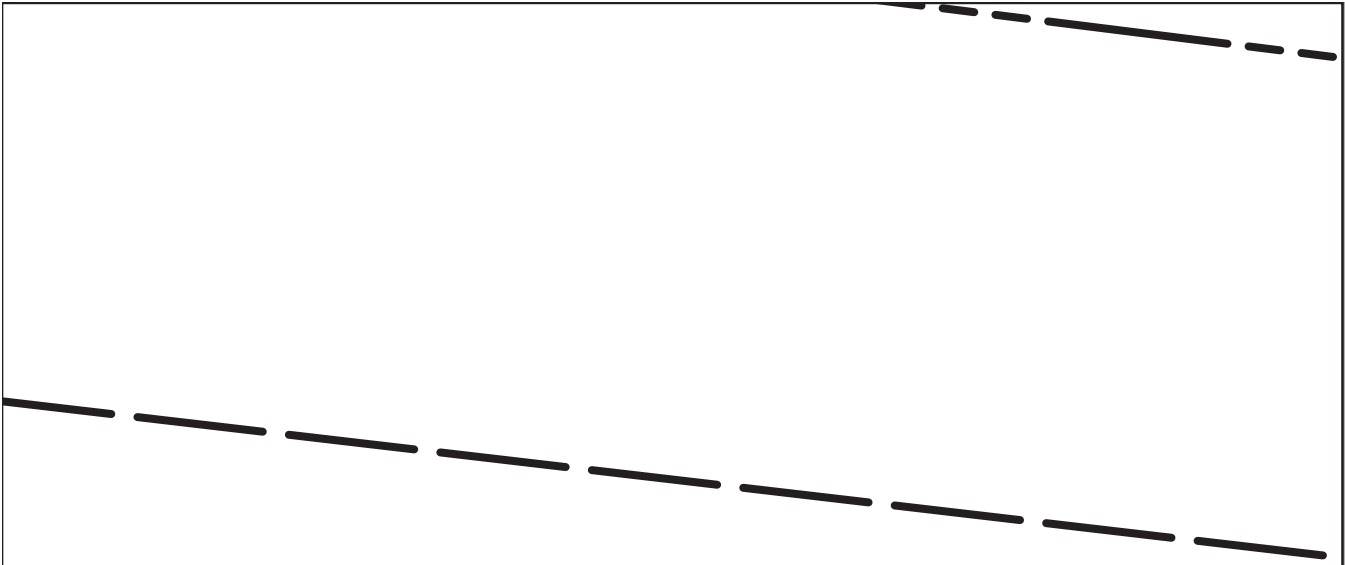


41





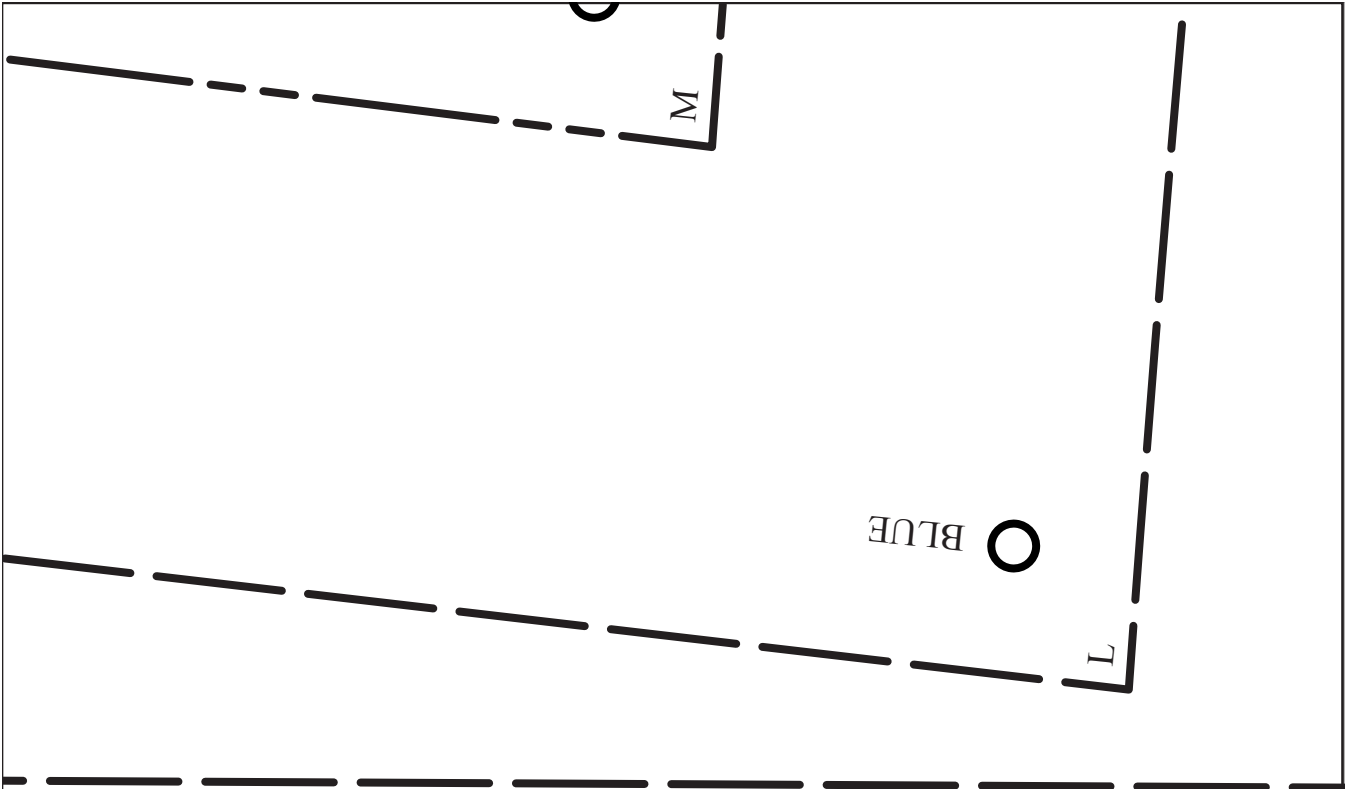
42



TH WRAP PATTERN PIECE IA TO WRAP
RN PIECE IB AT THIS LINE

TH WRAP PATTERN PIECE IA TO WRAP
RN PIECE IB AT THIS LINE

TH WRAP PATTERN PIECE IA TO WRAP
RN PIECE IB AT THIS LINE



ATTAC
PATTER

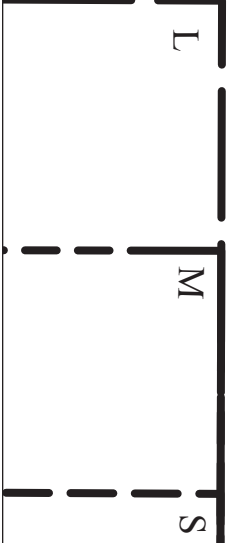
ATTAC
PATTER

ATTAC
PATTER

45



46



THE SEWING WORKSHOP

PATTERN COLLECTION

T
SEW
WOR
PATTERN

47



GRAINLINE

GRAINLINE

50

51

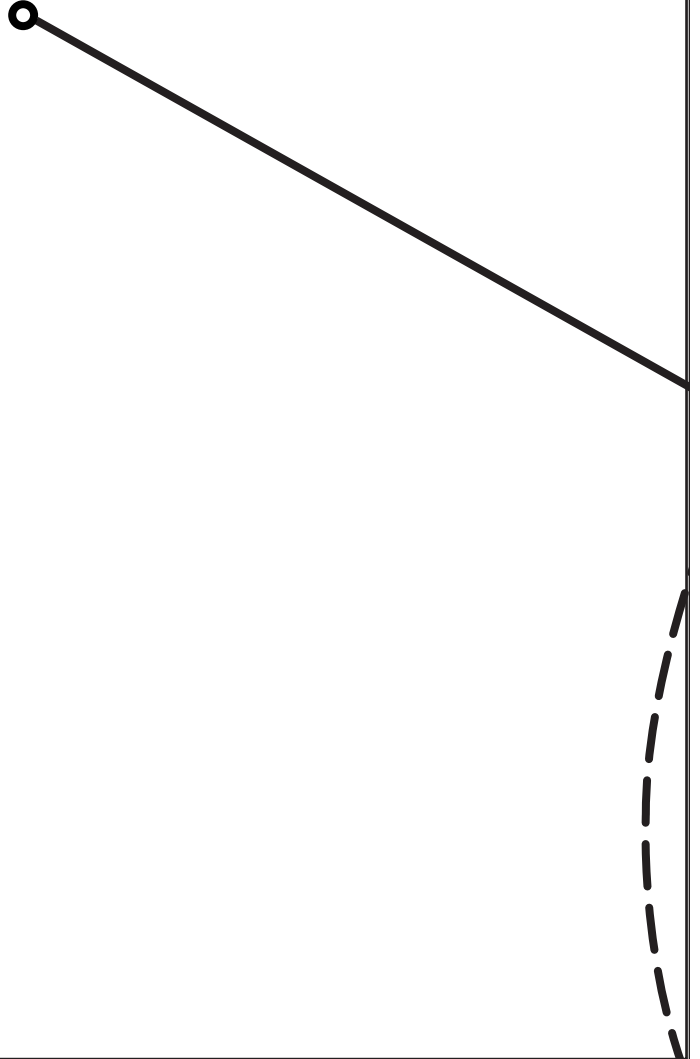


52

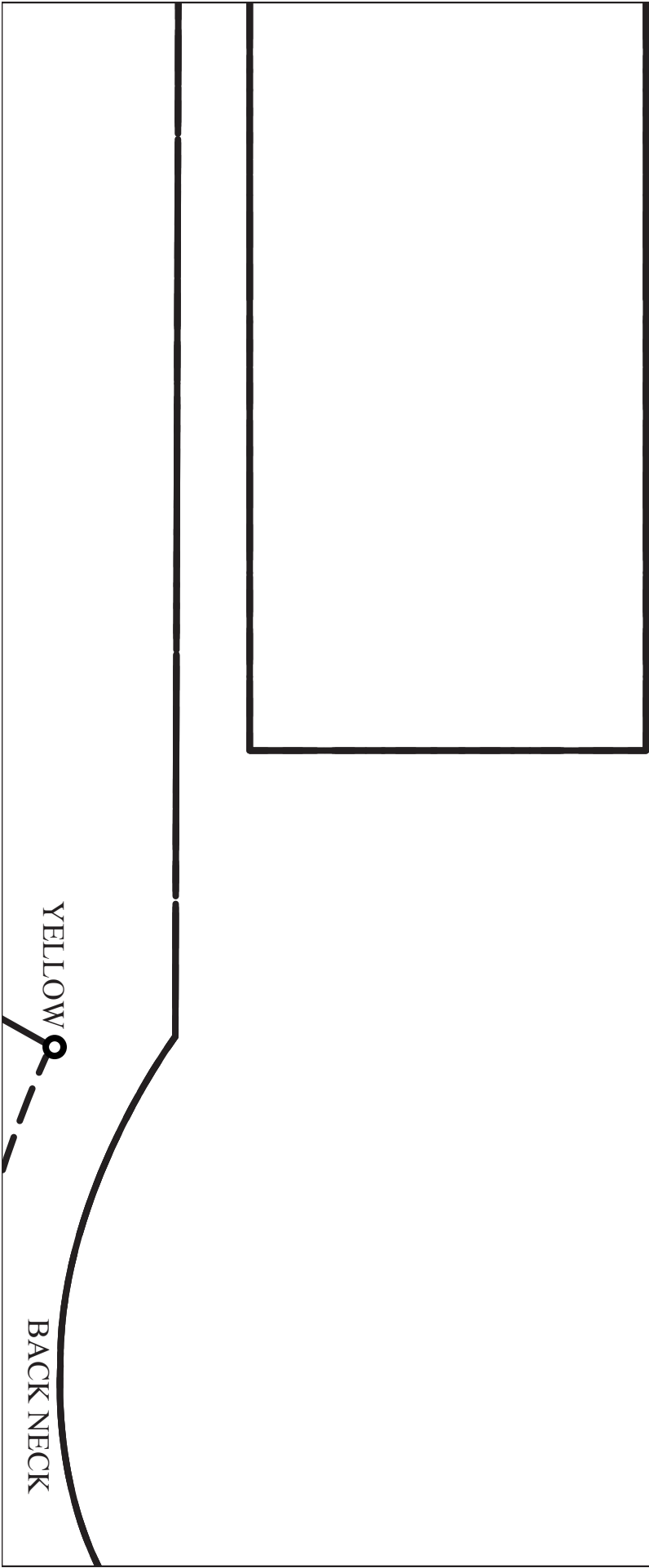
53

54

YELLOW



55



YELLOW

BACK NECK

56



CUT 1 ON FOLD





57

58

59

GRAINLINE

WRAP

CUT 1 THIS SIDE UP

ALL SIZES

$\frac{5}{8}$ " SEAM ALLOWANCE

60

THE

SEWING

WORKSHOP

PATTERN COLLECTION

1B

DÉJÀ VU

61

62

63


PURPLE

SHOULDER SEAM

64

65

HEM

66



67

68

69

GREEN

GREEN

GREEN

70

○ S

○ M

○ L



71

RIGHT

72



L



M



73

POCKET DI AGEMENT

74

75

ARMHOLE

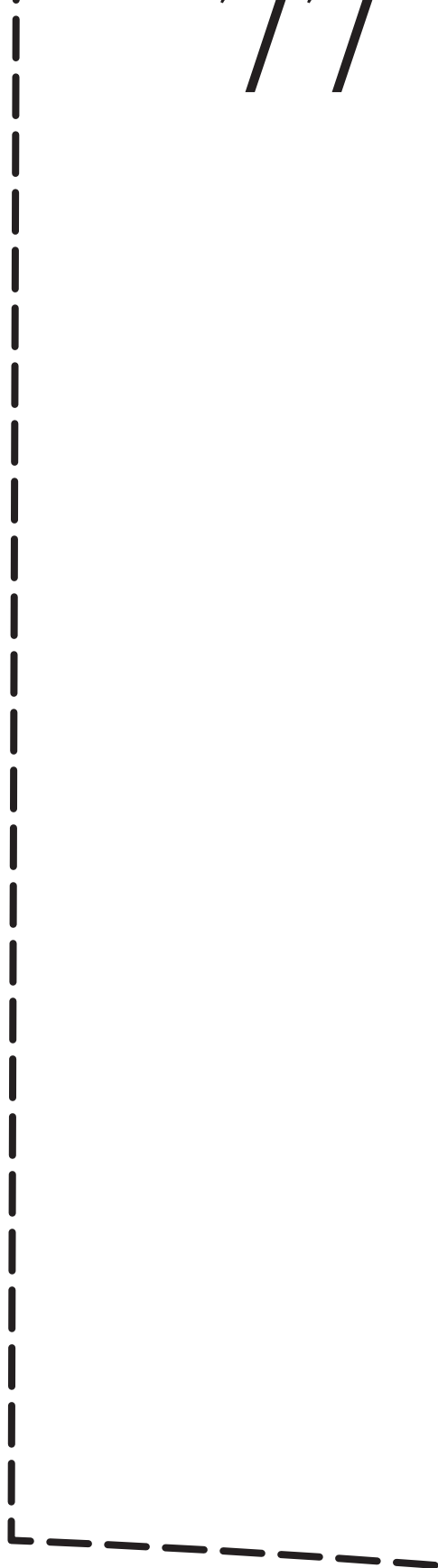


76



77

RONT



78

L

M



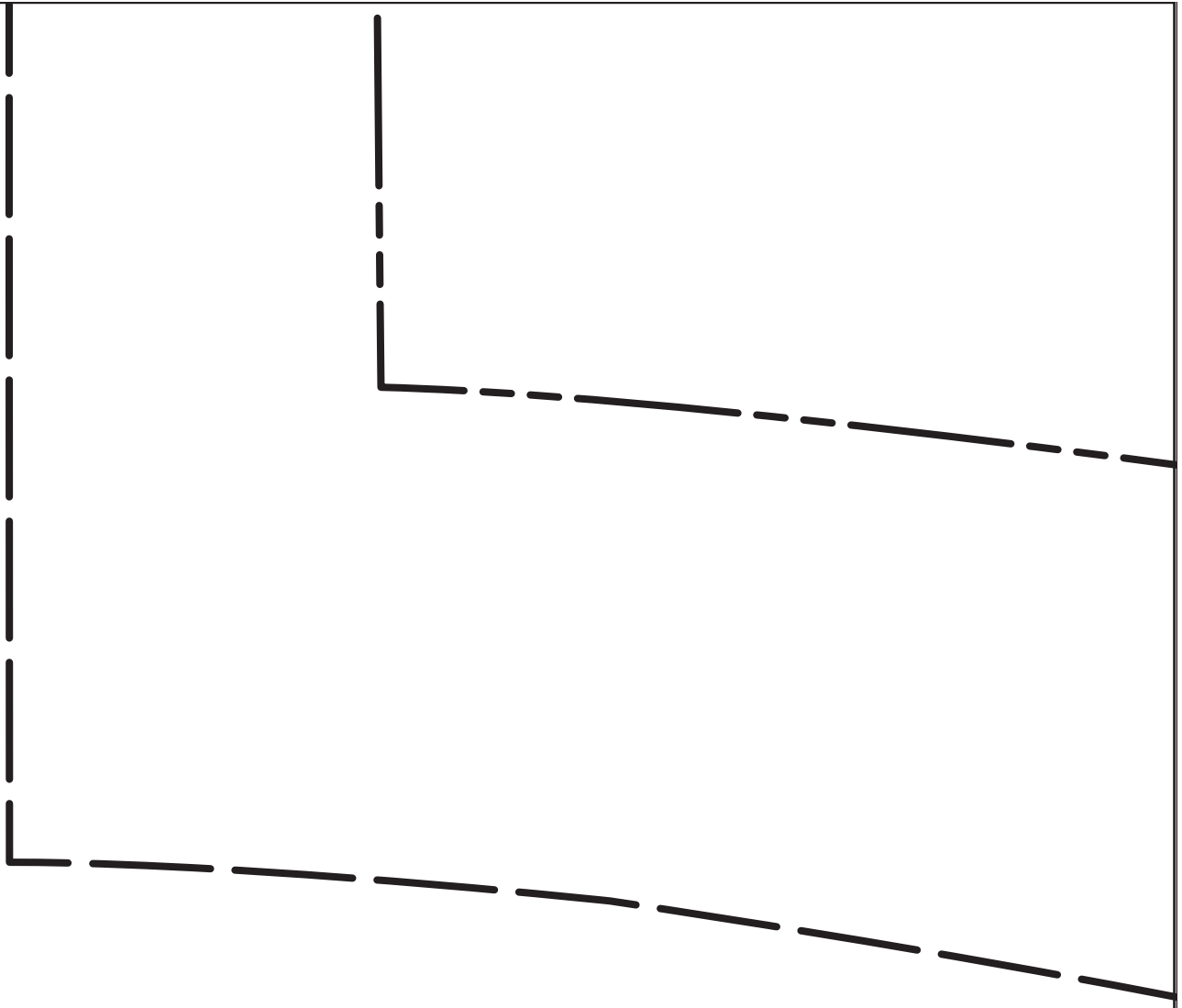
79

80

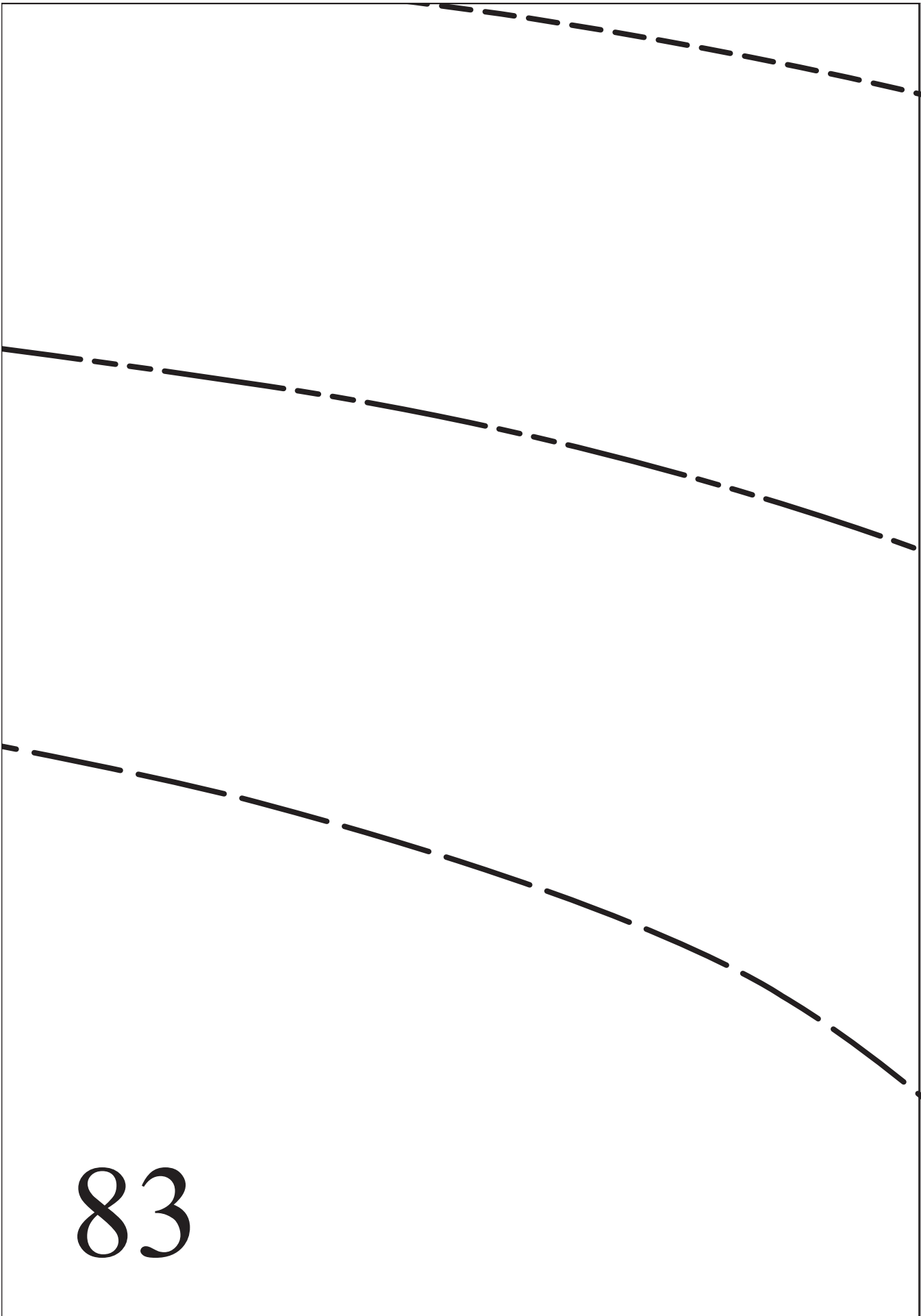
SHOULDER SEAM

GREEN





82



83

