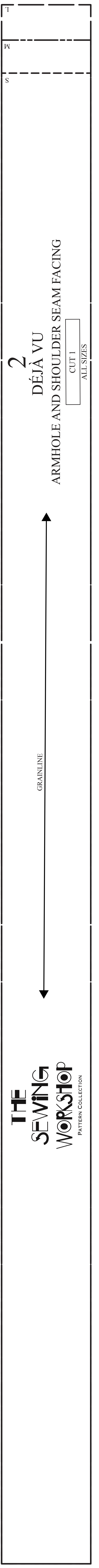
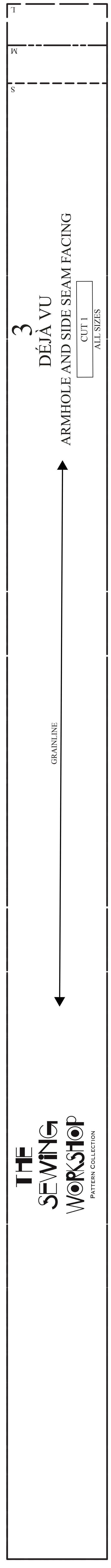
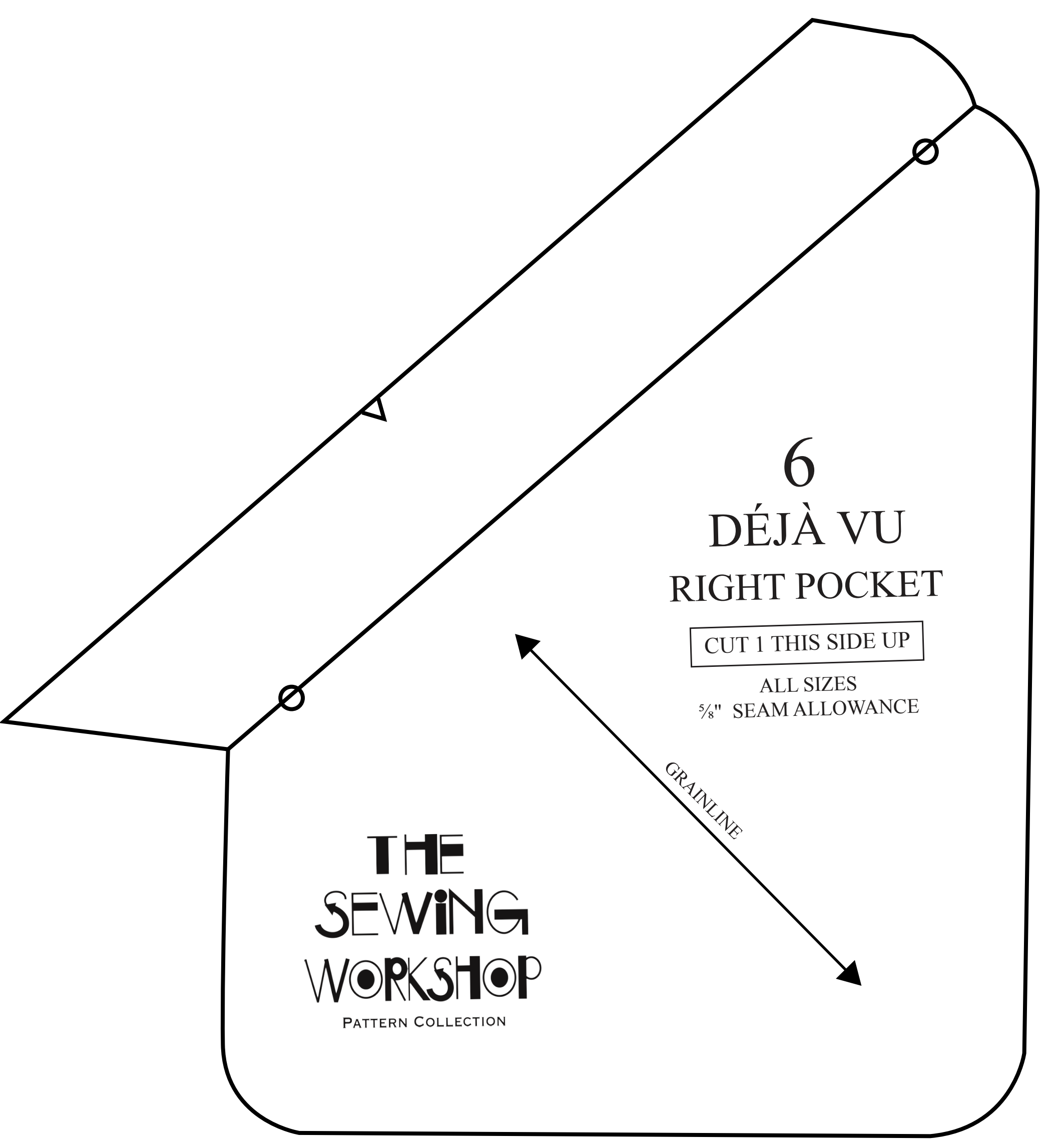
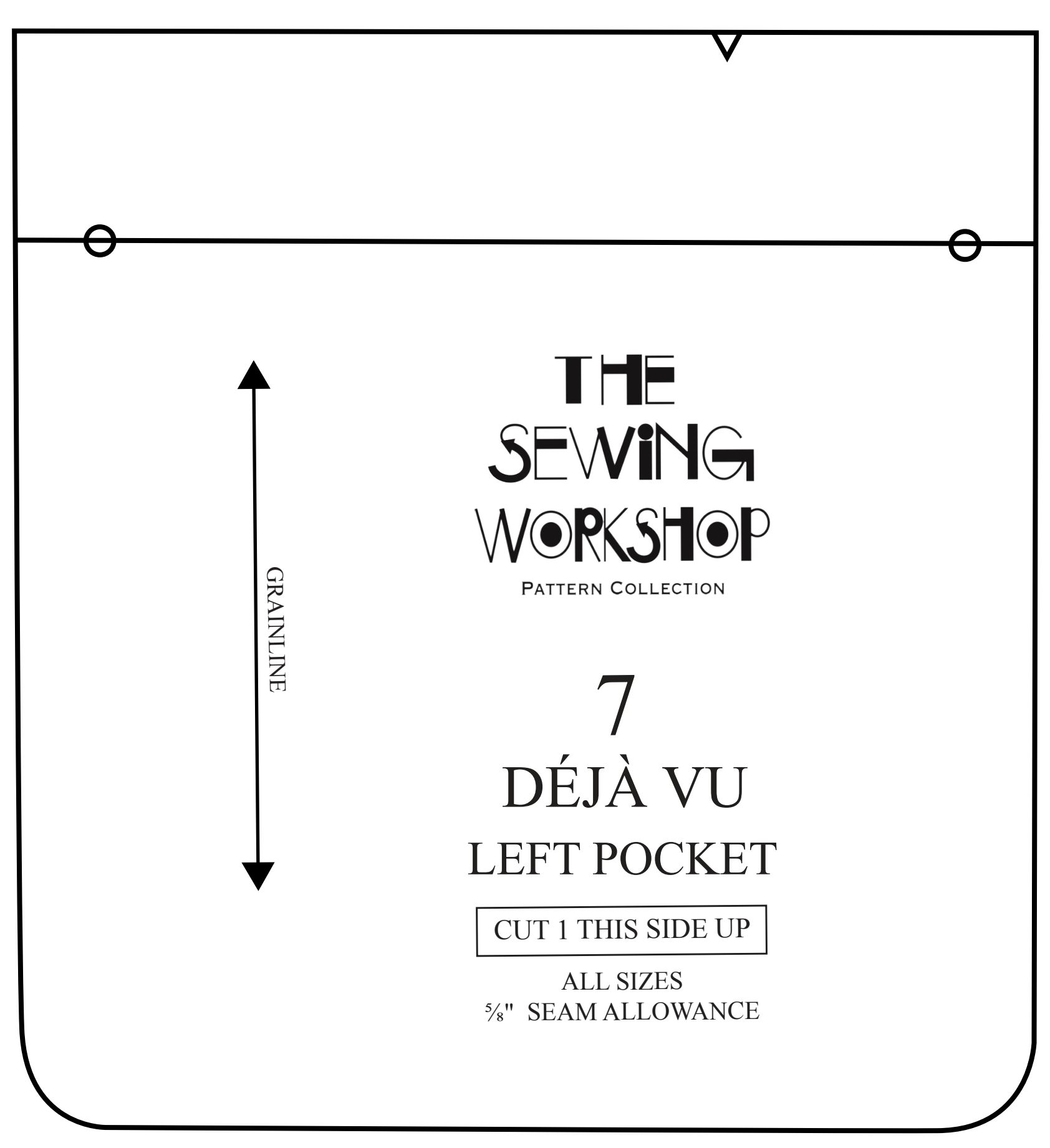
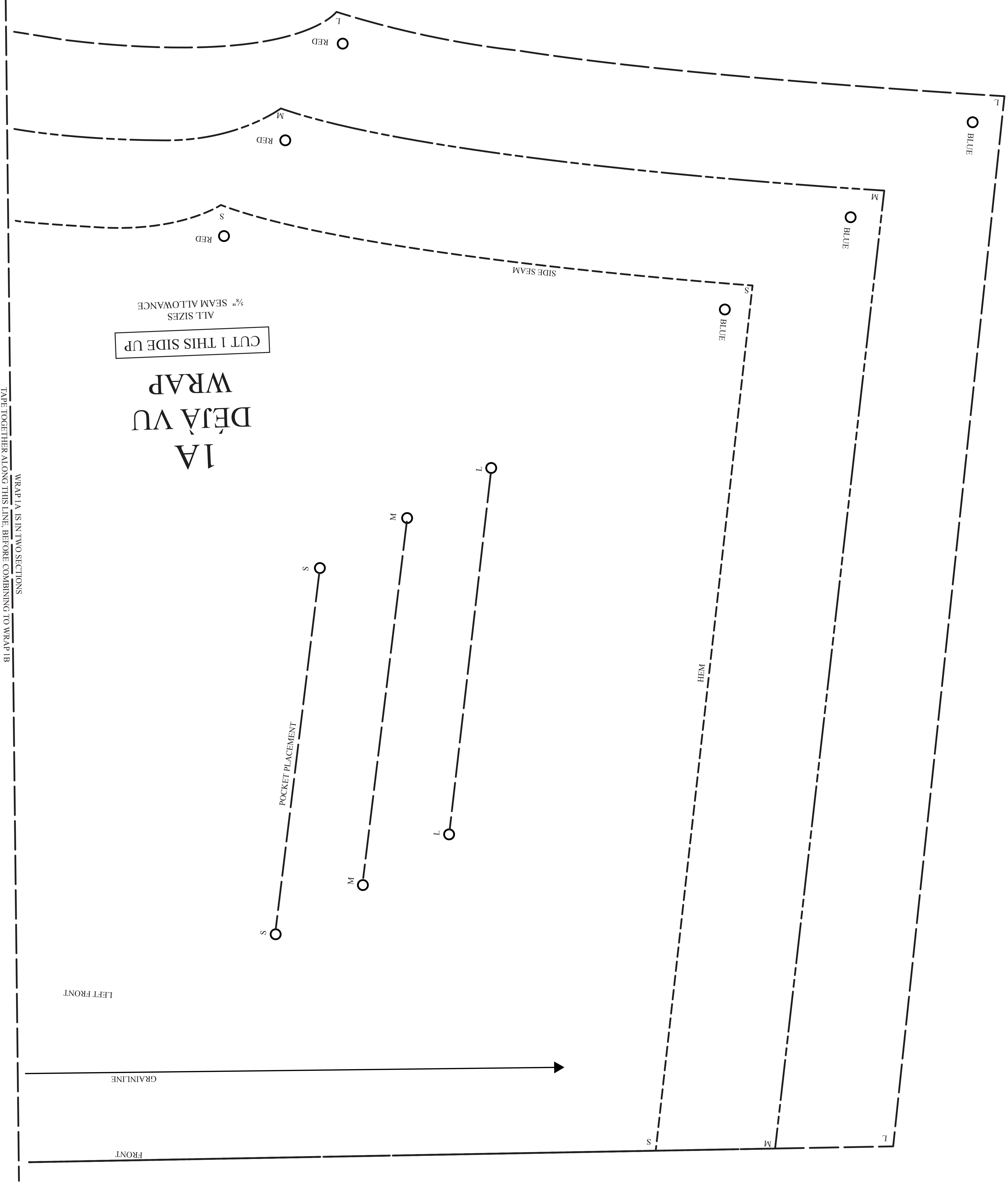




1x1"  
2.5 x 2.5 cm

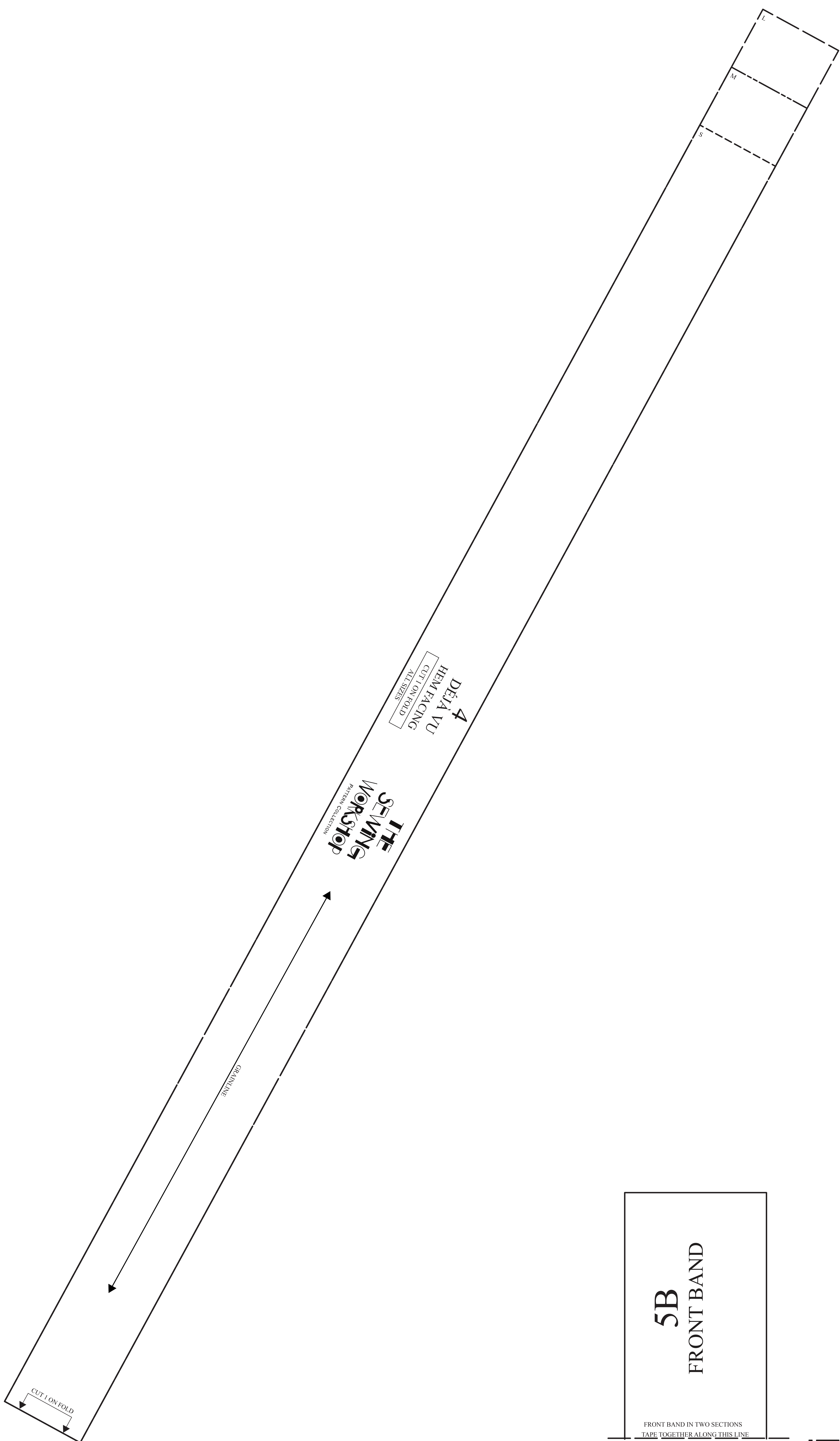
Did you print at the correct scale?  
Measure this box to check.  
DO NOT SCALE WHEN PRINTING.  
Remember to print at 100%  
or Actual Size, not Fit to Page.

WRAP 1A IS IN TWO SECTIONS  
TAPE TOGETHER ALONG THIS LINE BEFORE COMBINING TO WRAP 1B



1x1"  
2.5 x 2.5 cm

Did you print at the correct scale?  
Measure this box to check.  
DO NOT SCALE WHEN PRINTING.  
Remember to print at 100%  
or Actual Size, not Fit to Page.



**THE SEWING WORKSHOP**  
PATTERN COLLECTION

**5A**  
DÉJÀ VU  
FRONT BAND  
CUT 1

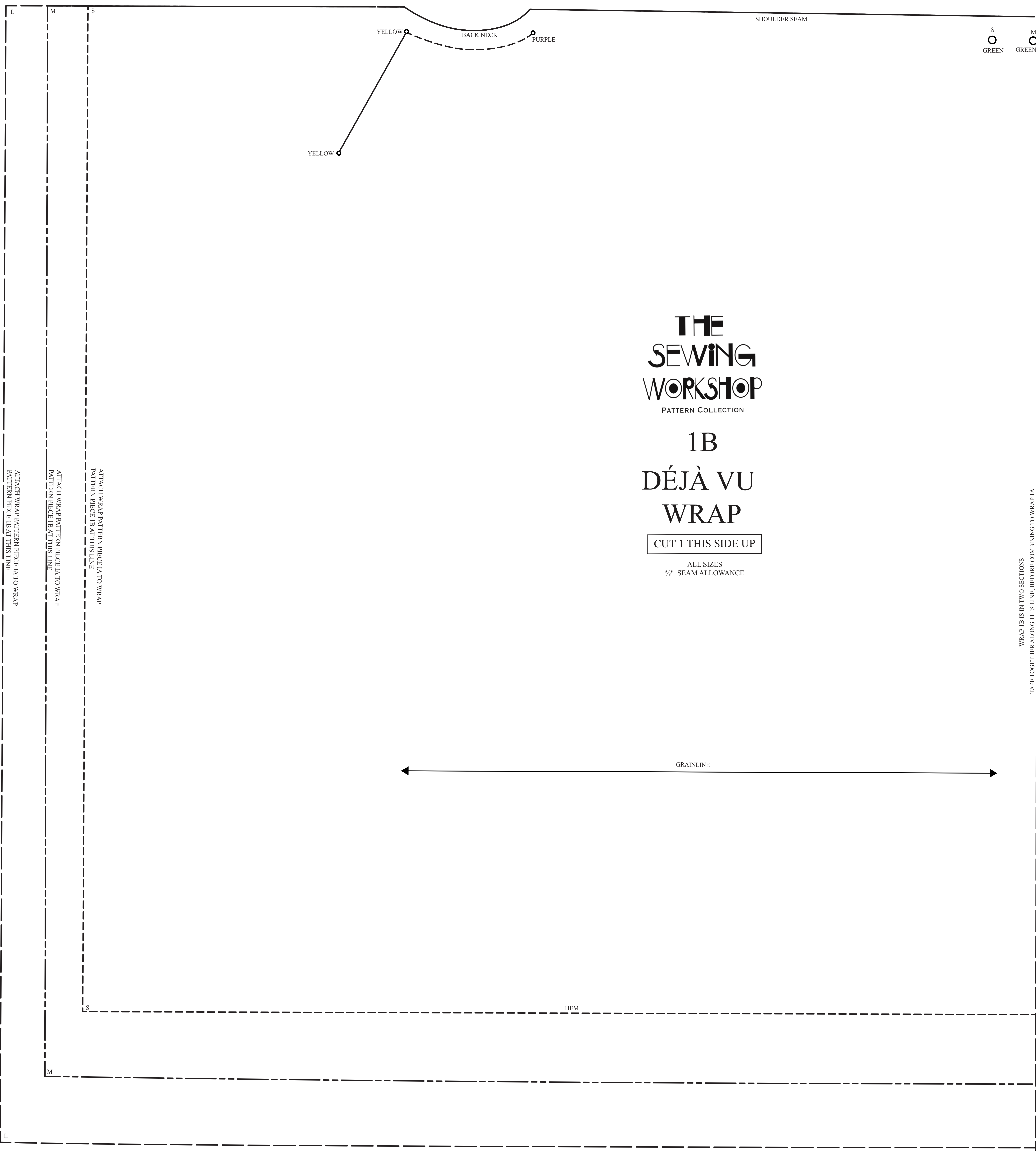
ALL SIZES

FRONT BAND IN TWO SECTIONS  
TAPE TOGETHER ALONG THIS LINE

GRAINLINE

1x1"  
2.5 x 2.5 cm

Did you print at the correct scale?  
Measure this box to check.  
DO NOT SCALE WHEN PRINTING.  
Remember to print at 100%  
or Actual Size, not Fit to Page.



**THE  
SEWING  
WORKSHOP**  
PATTERN COLLECTION

**1B  
DÉJÀ VU  
WRAP**

CUT 1 THIS SIDE UP

ALL SIZES  
3/8" SEAM ALLOWANCE

WRAP 1B IS IN TWO SECTIONS  
TAPE TOGETHER ALONG THIS LINE, BEFORE COMBINING TO WRAP 1A

Did you print at the correct scale?  
Measure this box to check.  
DO NOT SCALE WHEN PRINTING.  
Remember to print at 100%  
or Actual Size, not Fit to Page.

**THE SEWING WORKSHOP**  
PATTERN COLLECTION

### 8 DÉJÀ VU RIGHT POCKET LINING

CUT 1 THIS SIDE UP  
ALL SIZES  
3/4" SEAM ALLOWANCE

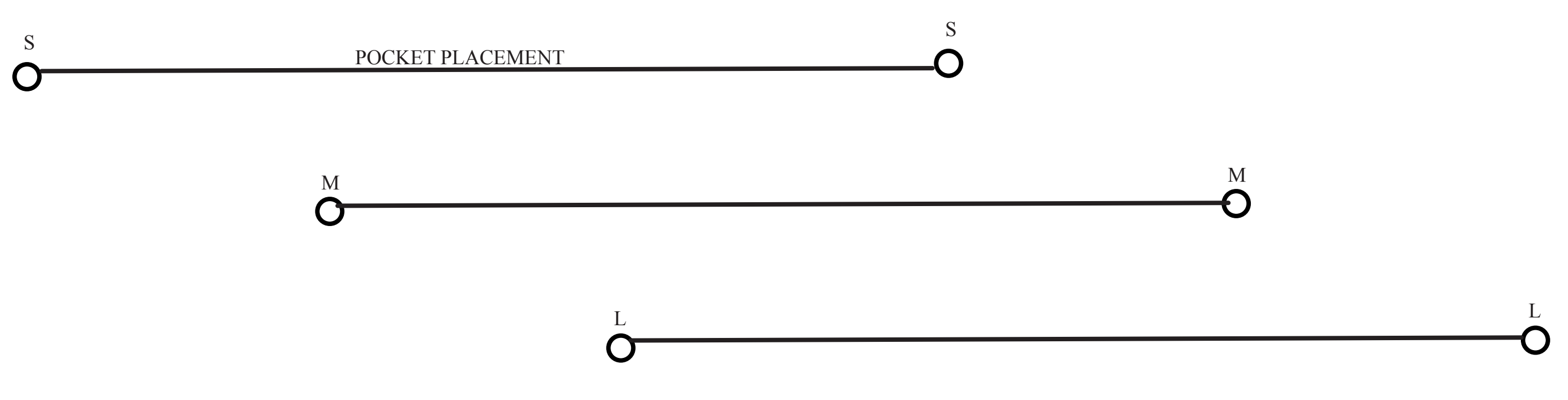
**THE SEWING WORKSHOP**  
PATTERN COLLECTION

### 9 DÉJÀ VU LEFT POCKET LINING

CUT 1 THIS SIDE UP  
ALL SIZES  
3/4" SEAM ALLOWANCE

## 1B DÉJÀ VU WRAP

CUT 1 THIS SIDE UP  
ALL SIZES  
3/4" SEAM ALLOWANCE



RIGHTFRONT

WRAP 1B IS IN TWO SECTIONS  
TAPE TOGETHER ALONG THIS LINE BEFORE COMBINING TO WRAP 1A

L  
GREEN

ARMHOLE

GRAINLINE

S  
GREEN

M  
GREEN

L  
GREEN

SHOULDER SEAM

S  
PURPLE

M  
PURPLE

L  
PURPLE

GRAINLINE