

Déjà Vu Wrap

DIGITAL PATTERN

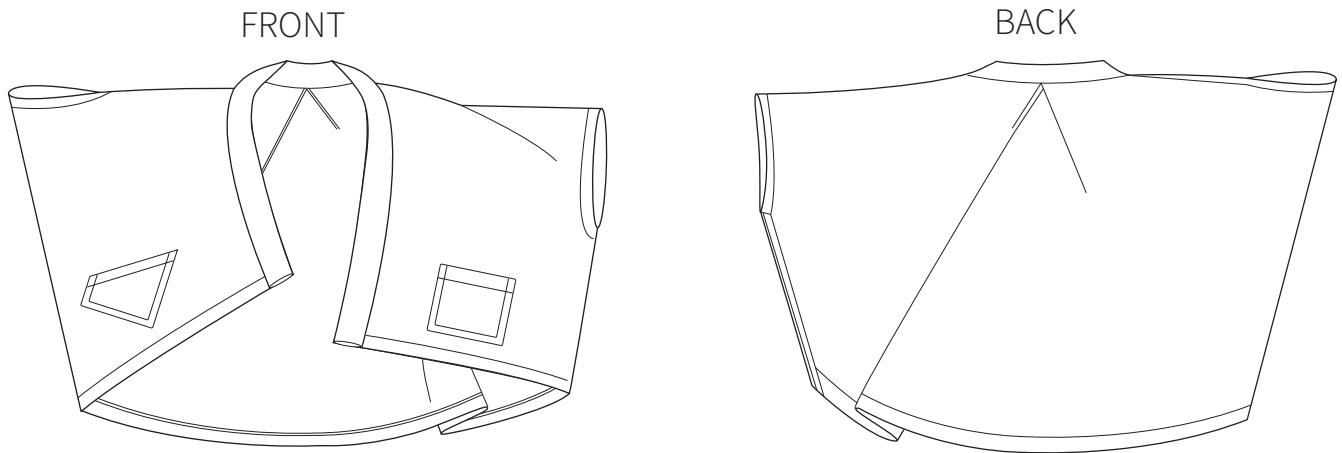
Presented By

THE SEWING WORKSHOP
PATTERN COLLECTION



Déjà Vu Wrap

One-piece asymmetric wrap has deep back pleat, front band, and faced armholes and hems. Optional pockets.
Wrong side of fabric shows.



RECOMMENDED FABRICS

Wool, Linen, Novelty Weaves, Gauze, Raw Silk, Chenille

NOTIONS

Thread

YARDAGE - Top

45"/60"	3 yards	Size S
45"/60"	3½ yards	Size M
45"/60"	4 yards	Size L

YARDAGE - Lining

⅓ yards All Sizes

SIZE MEASUREMENTS (inches)

	S		M		L	
SIZE	8	10	12	14	16	18
Bust	32½	34	36	38	40	42
Waist	25½	26½	27½	29	31	33
Hip	35	36	37	39½	41½	43½

FINISHED MEASUREMENTS - TOP (Inches)

SIZE	S	M	L
Hip *	72	77	82

*Approximate measurements based on overlap in front.

Déjà Vu Wrap

GLOSSARY

BASTE - Machine sew using 5mm length stitch or use Fusi-Web (fusible web tape) to fuse in place.

GRADE - When seam allowances are turned in the same direction, trim the seam allowances to varying widths to reduce bulk and the occurrence of allowances "reading through" to the right side of garment. Generally the garment seam allowances is trimmed wider.

SLIPSTITCH - An invisible hand stitch used to hold elements in place. Take a tiny inconspicuous stitch in garment near seam, then bring needle diagonally up and slip through folded edge. Continue in this manner, spacing stitches about ¼" apart.

TOPSTITCH - A line of visible stitching emphasizing structural lines of garment while working to keep seams and edges flat and crisp. Use standard stitch length. On right side, stitch ¼" from edge, seamline, or as directed.

UNDERSTITCH - With right side up, on facing side, stitch close to seam and through all seam allowances. Grade both seam allowances and press toward facing.

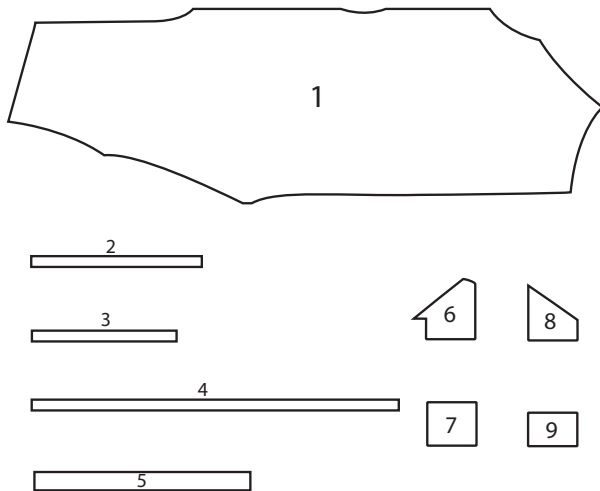
FABRIC CUTTING LAYOUT

Place pattern pieces on straight grain of fabric, keeping line parallel to selvage. Cut all pieces along cutting line indicated for desired size.

Mark all placement lines on WRONG side of fabric.

All seam allowances are 5/8" unless otherwise indicated.

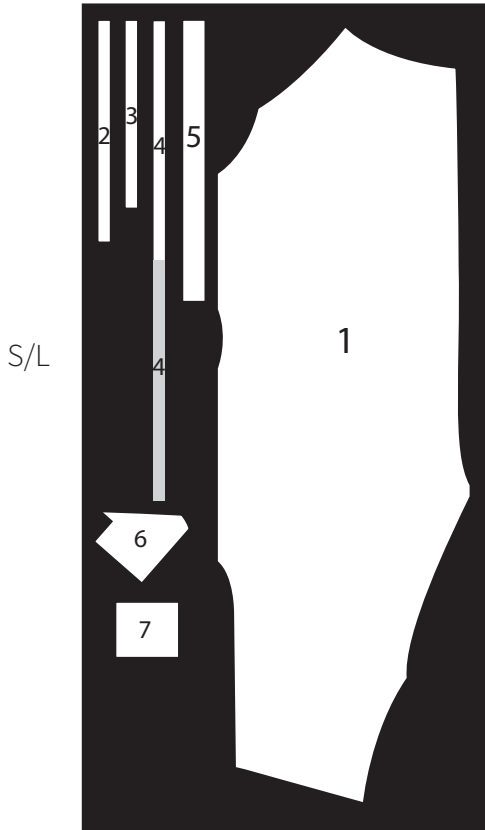
All layouts are for "with nap". Cutting layouts show approximate position of pattern pieces.



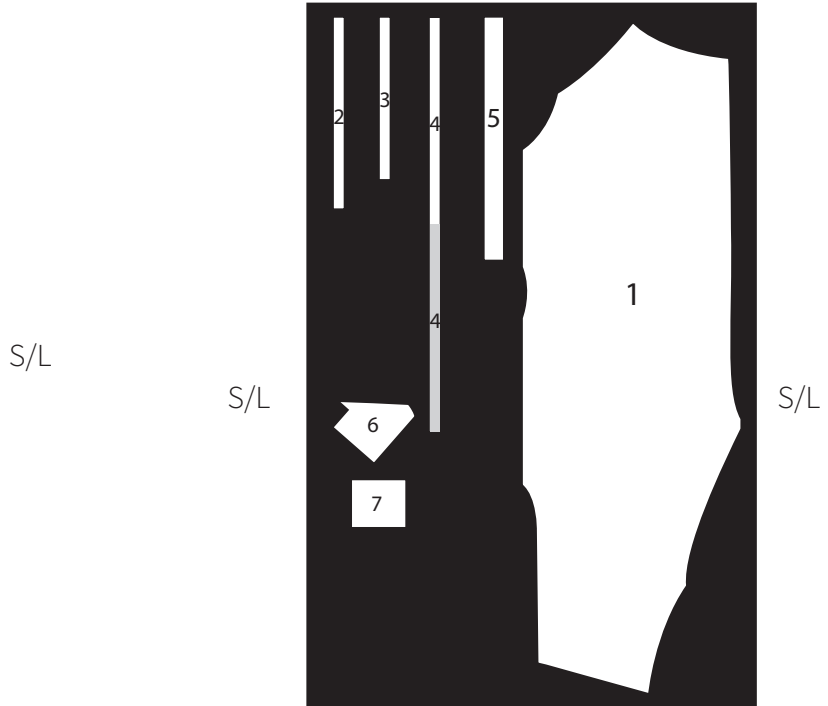
Déjà Vu Wrap

1. Wrap
2. Armhole & Shoulder Seam Facing
3. Armhole & Side Seam Facing
4. Hem Facing
5. Front Band
6. Right Pocket
7. Left Pocket
8. Right Pocket Lining
9. Left Pocket Lining

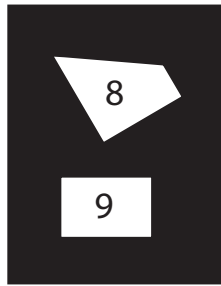
Déjà Vu Wrap



Déjà Vu Wrap
45" Fabric
3 yards - S
3½ yards - M
4 yards - L
Pieces 1 - 7

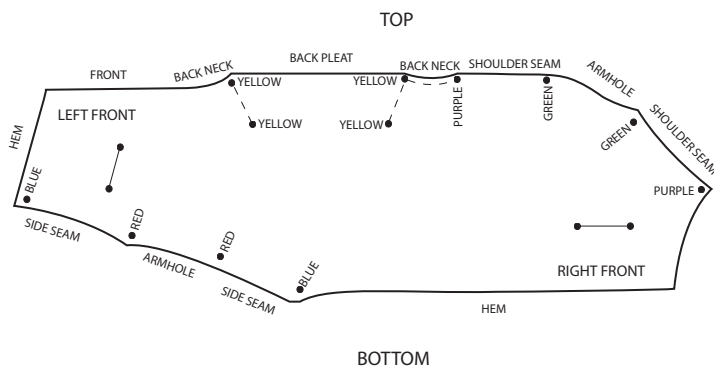


Déjà Vu Wrap
60" Fabric
3 yards - S
3½ yards - M
4 yards - L
Pieces 1 - 7



Déjà Vu Wrap
Lining
⅓ yards
All Sizes
Pieces 8 - 9

Preparation



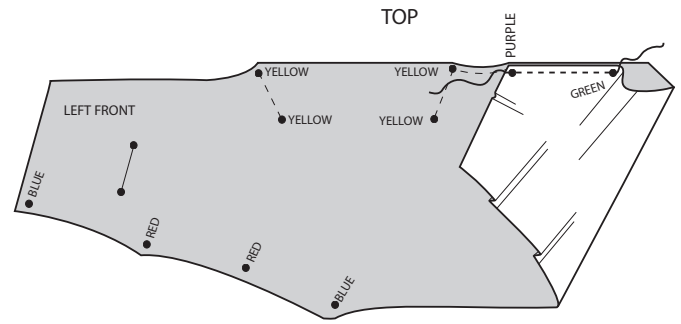
Note: Before cutting body of wrap, tape all Wrap sections together to create 1 pattern pieces.

Mark all dots with tailor tacks using the different colors of thread indicated on the pattern.

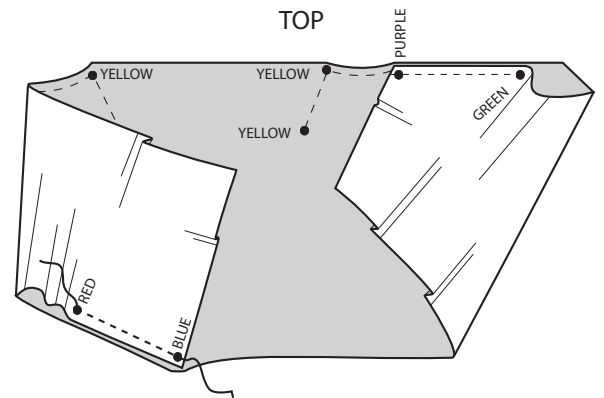
Déjà Vu Wrap

RIGHT SHOULDER SEAM, LEFT SIDE SEAM

1. With right sides together, matching green dot to green dot and purple dot to purple dot, stitch right shoulder seam of WRAP (1). Stitch through purple dot to neck edge, but end and secure stitching exactly at green dot. Press seam open.



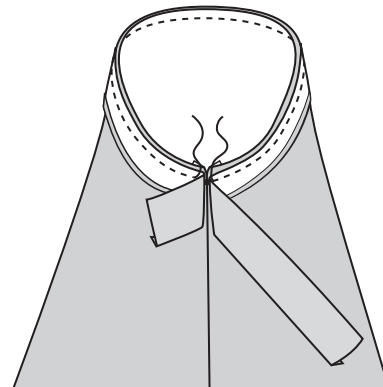
2. With right sides together, matching blue dot to blue dot and red dot to red dot, stitch left side seam through blue dot, but end and secure stitching exactly at red dot. Press seam open.



ARMHOLE AND SEAM FACINGS

3. Press $\frac{3}{8}$ " to wrong side on one long side of ARMHOLE AND SHOULDER SEAM FACING (2).

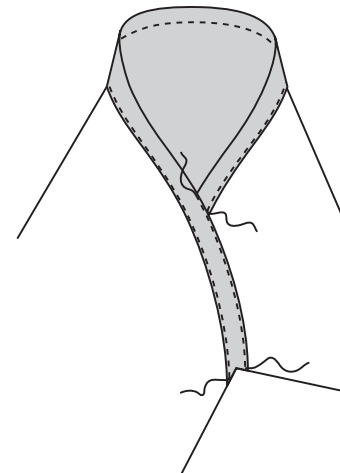
With right sides together, pin unpressed edge of Armhole and Shoulder Seam Facing to armhole, making sure one end of facing extends $2\frac{1}{2}$ " beyond green dot. Stitch with garment side up from green dot to green dot leaving about two stitches open for ease in facing. Trim and **GRADE** seam. **UNDERSTITCH**. Turn to wrong side and press.



4. On wrong side of garment, place remaining length of Armhole and Shoulder Seam Facing over shoulder seam allowances also covering raw end of Armhole and Shoulder Seam Facing. Turn $\frac{5}{8}$ " to wrong side on remaining raw edge. Trim excess length of Armhole and Shoulder Seam Facing.

Hand **BASTE** Armhole and Shoulder Seam Facing to garment along outside edge and both sides of shoulder seam.

TOPSTITCH outer edge of Armhole and Shoulder Seam Facing and remaining loose edges.



Déjà Vu Wrap

5. Press $\frac{3}{8}$ " to wrong side on one long side of ARMHOLE AND SIDE SEAM FACING (3).

With right sides together, pin unpressed edge of Armhole and Side Seam Facing to armhole, making sure one end of Armhole and Side Seam Facing extends $2\frac{1}{2}$ " beyond red dot. Stitch with garment side up from red dot to red dot leaving about two stitches open for ease in turning.

Trim and **GRADE** seam. **UNDERSTITCH**. Turn to wrong side and press.

TOPSTITCH Armhole and Side Seam Facing to armhole and over sides seam as described above for armhole and shoulder seam.

HEM FACING

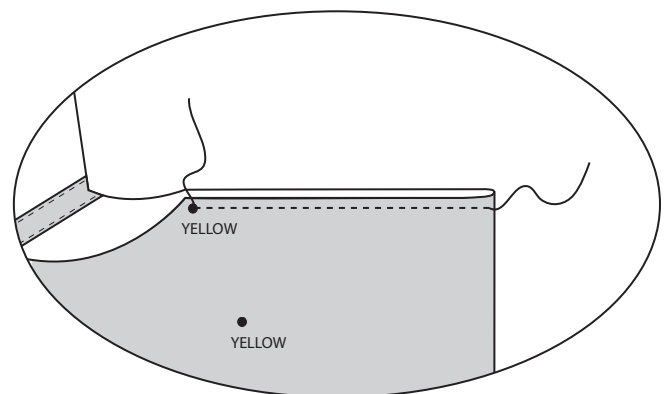
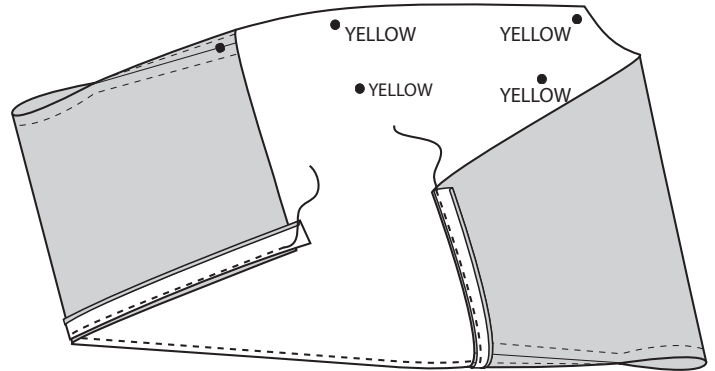
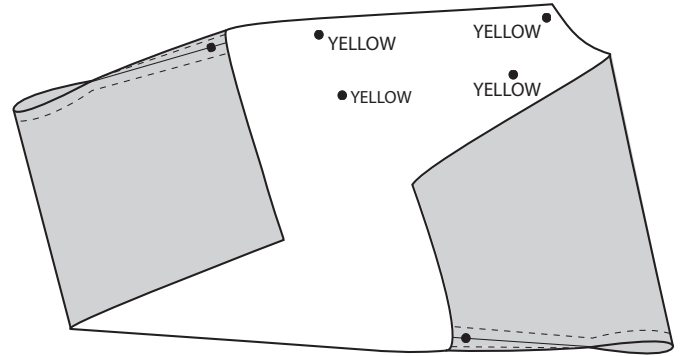
6. Press $\frac{3}{8}$ " to wrong side on one long side of HEM FACING (4).

With right sides together, stitch Hem Facing to bottom of garment. Trim and **GRADE** seam. **UNDERSTITCH**. Turn Hem Facing to wrong side and press. **BASTE** Hem Facing to garment.

TOPSTITCH.

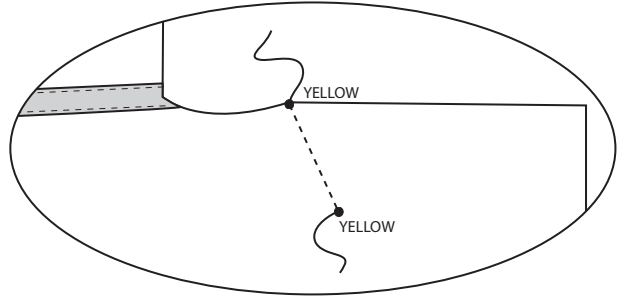
BACK PLEAT

7. With **WRONG** sides together and matching upper yellow dots, stitch pleat seam. Trim seam, turn, and press.

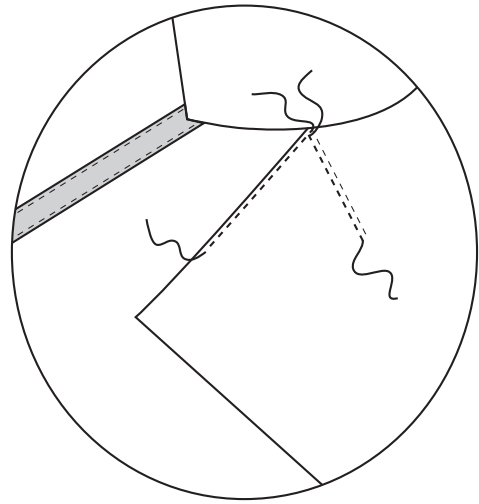


Déjà Vu Wrap

8. With right sides of pleat together, match upper and lower yellow dots and stitch between dots. Press pleat toward shoulder seam.

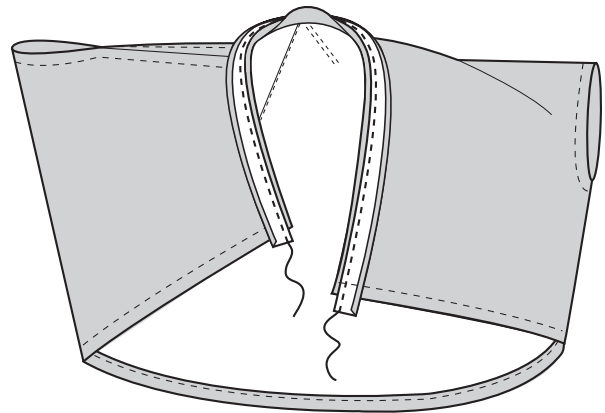


9. Stitch 5" of pleat to garment and re-stitch pleat seam over previous stitching.

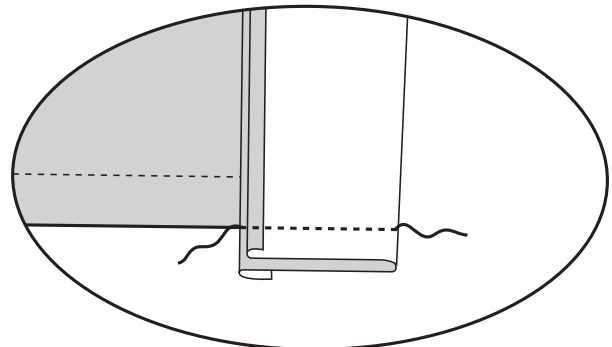


FRONT BAND

10. Press $\frac{3}{8}$ " to wrong side on one long edge of FRONT BAND (5). With right sides together, extend narrow edge of band at least $\frac{5}{8}$ " beyond bottom edge and stitch unpresse edge of Front Band to garment front and neck edge. Trim and **GRADE** seam. Press Front Band away from garment and seam allowance toward Front Band.

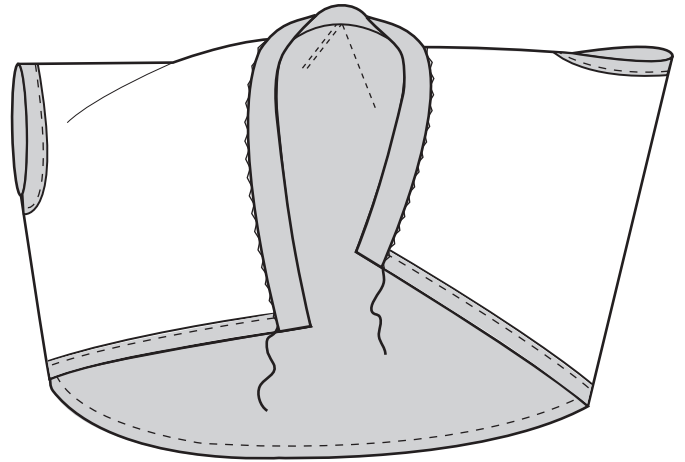


11. With right sides together, fold end of Front Band back and stitch across bottom. Trim and turn Front Band to wrong side.



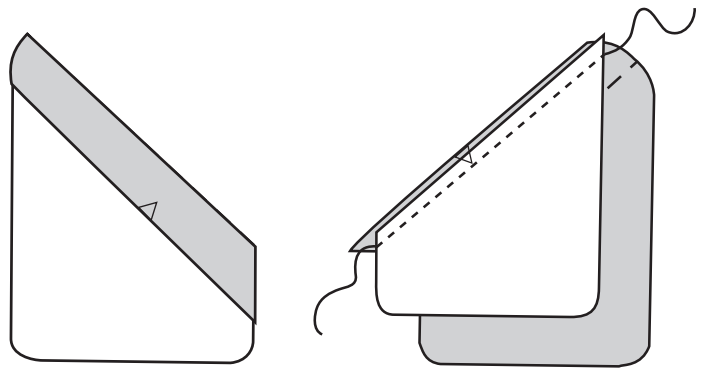
Déjà Vu Wrap

12. Place pressed edge of Front Band just beyond stitching line. **SLIPSTITCH**.



POCKETS

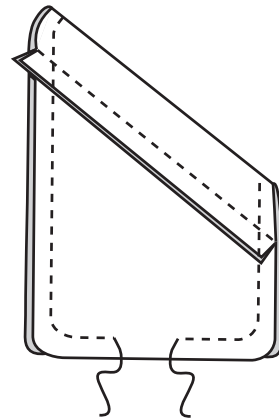
13. Press $1\frac{3}{4}$ " of top of RIGHT POCKET (6) to wrong side. With right sides together and matching notch, stitch RIGHT POCKET LINING (8) to Right Pocket at top edge. Press seam toward lining.



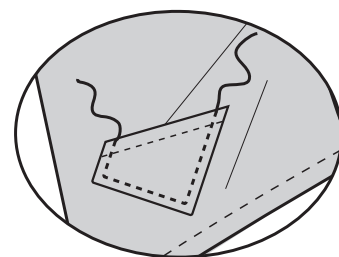
14. Turn top allowance to right side on foldline. Match raw edges of Right Pocket and Right Pocket Lining. Stitch Right Pocket Lining to Right Pocket leaving an opening. Trim seam. Turn Right Pocket to right side and press.

SLIPSTITCH opening.

TOPSTITCH 1" from top of Right Pocket.

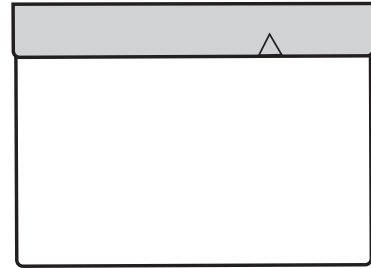


15. Matching top of Right Pocket to dots, **BASTE** Right Pocket to right front. **TOPSTITCH** Right Pocket to garment.

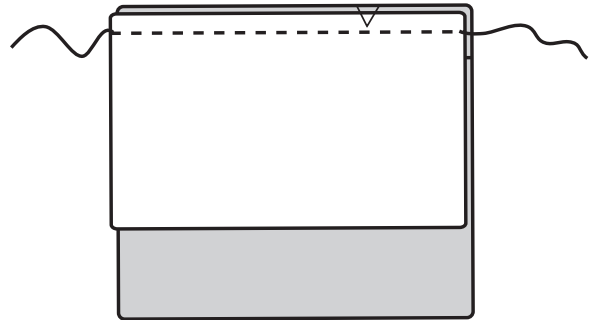


Déjà Vu Wrap

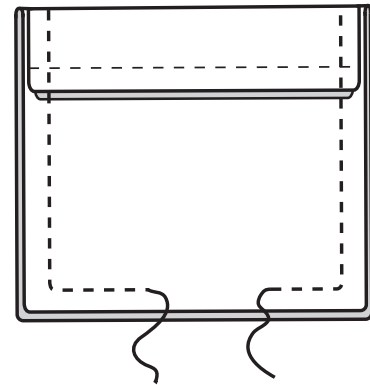
16. Press $1\frac{3}{4}$ " of top of LEFT POCKET (7) to wrong side.



17. With right sides together and matching notch, stitch LEFT POCKET LINING (9) to Left Pocket at top edge. Press seam toward Left Pocket Lining.



18. Turn top allowance to right side on foldline. Match raw edges of Left Pocket and Left Pocket Lining. Stitch Left Pocket Lining to Left Pocket leaving an opening. Trim seam. Turn Left Pocket to right side and press.



SLIPSTITCH opening.

TOPSTITCH 1" from top of Left Pocket.

19. Matching top of Left Pocket to dots, **BASTE** Left Pocket to left front.

TOPSTITCH Left Pocket to garment.

