

THE SEWING WORKSHOP

PATTERN COLLECTION

ICON VEST

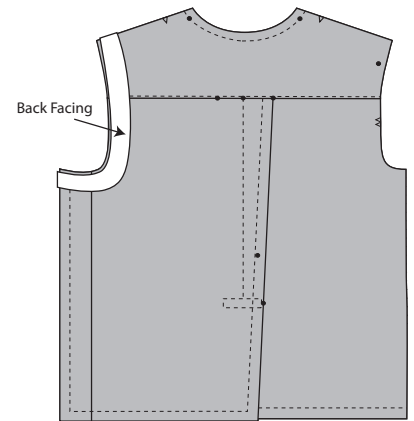
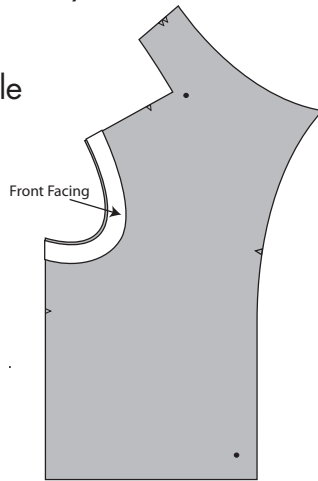
FABRIC LAYOUTS

1. Cut the following pieces from Brown Textured Poly: 1, 2, 3, 4, 5, 7 and 8. (All pieces except sleeves, and facings).

2. To make armhole facings, trace front armhole shape and add 2¼" to width.

Place pattern piece #8 (back yoke) over #3 (right back) and make facing 2¼" wide.

3. A lightweight fusible interfacing can be fused on entire piece of sheer fabric before cutting.

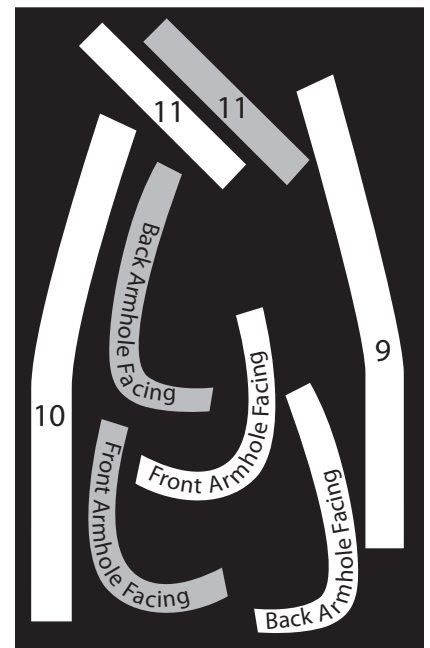
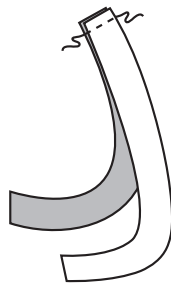


4. Cut facing pieces 9, 10 and 11 and armhole facings from sheer black print.

GARMENT CONSTRUCTION

5. Construct garment as in guide sheet, eliminating the sleeves.

6. With right sides together, stitch front armhole facing to back armhole facing at shoulder and side seams. Press seams open.



7. **STAYSTITCH** ⅝" from raw edge on outer edge of facings. Fold along stitching line to press to wrong side. Trim to ⅜".

8. With right sides together, stitch facings to garment. **UNDERSTITCH** on facing side of garment. Trim seam.

9. Press facing to wrong side. **TOPSTITCH** facings in place.

10. Beginning 10" from top edge of front, evenly space four buttonholes.

11. Stitch FOUR buttons on center front, and one on pocket.