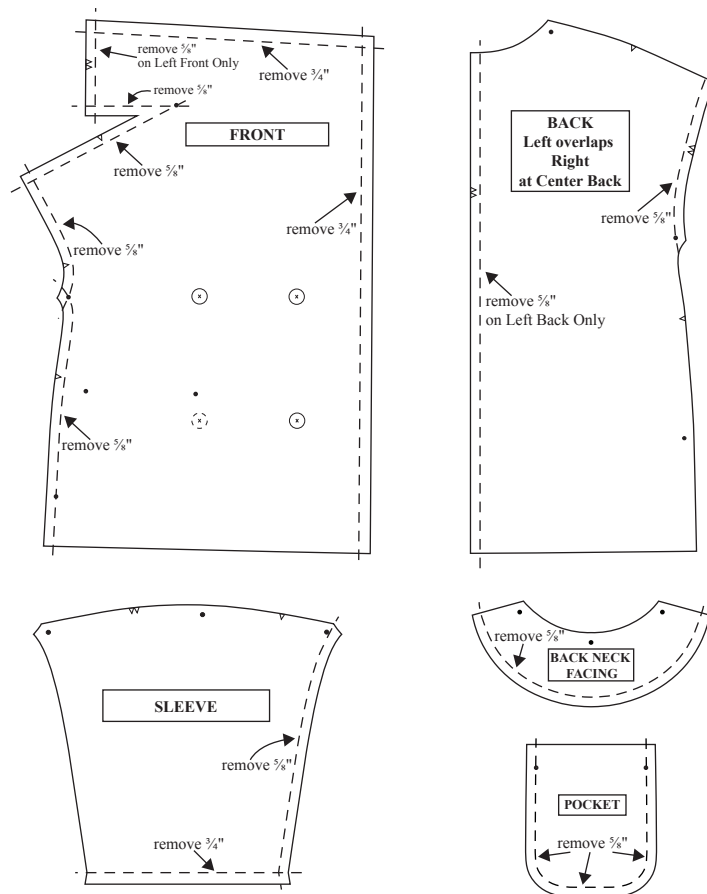


**OOPS! Flatiron Coat & Jacket**  
**Sewing Overlapping Seams**

Replace the diagram in your guidesheet with this one.



**OOPS! Flatiron Coat**  
**Snap Placement**

The ball half of a snap is sewn on the right side of the garment. The socket half of a snap is sewn on the underside of the overlap.

There are only 3 snaps used to close the Flatiron Coat.

Please make note of the following correction on your Flatiron Coat pattern.

Add another snap placement symbol on the Front (1) pattern piece (indicated in red on the illustration).

Label the placements A and B.

On the right side of the garment, sew the ball half on the left front only at A. On the right front overlap, sew the socket half of the snap on the right front only at B.

