



Poppy Vest

Presented By

THE SEWING WORKSHOP

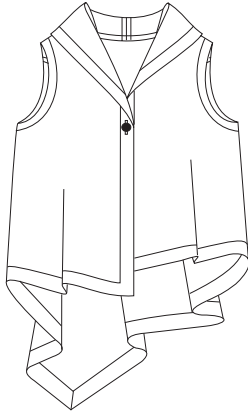
PATTERN COLLECTION



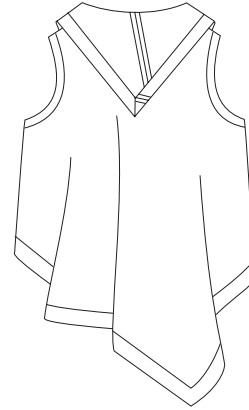
Poppy Vest

Poppy Vest: Close-fitting upper bodice, A-line, unlined vest has asymmetric hemlines and front extending into collar (wrong side shows). Front and back are cut-in-one with single button closure and bias bound armholes.

FRONT



BACK



RECOMMENDED FABRICS

Wool, Linen, Novelty Weaves, Stable Knits, Handwovens. **Wrong side of fabric shows.**

NOTIONS

One 1" Button
Thread

YARDAGE - Top

50/60" 1 $\frac{5}{8}$ yards All Sizes

SIZE MEASUREMENTS (inches)

	XS	S		M		L		XL	XXL
SIZE	6	8	10	12	14	16	18	20	22
Bust	31	32 $\frac{1}{2}$	34	36	38	40	42	44	46
Waist	24 $\frac{1}{2}$	25 $\frac{1}{2}$	26 $\frac{1}{2}$	27 $\frac{1}{2}$	29	31	33	35	37
Hip	34	35	36	37	39 $\frac{1}{2}$	41 $\frac{1}{2}$	43 $\frac{1}{2}$	45 $\frac{1}{2}$	47 $\frac{1}{2}$

FINISHED MEASUREMENTS - VEST (Inches)

SIZE	S	M	L
Bust	40	44	48
Waist	46	50	54
Hip	53	57	61
Center Back Length	27 $\frac{1}{2}$	28	28 $\frac{1}{2}$

Poppy Vest

GLOSSARY

BASTE - Machine sew using 5mm length stitch or use Fusi-Web (fusible web tape) to fuse in place.

FINISH - Overcast or Overlock/Serge.

REINFORCE - Stitch along seamline where indicated in instructions using small machine stitches.

STAYSTITCH - Using smaller stitches, sew on seamline of seam allowance.

TOPSTITCH - A line of visible stitching emphasizing structural lines of garment while working to keep seams and edges flat and crisp. Use standard stitch length. On right side, stitch ¼" from edge, seamline, or as directed.

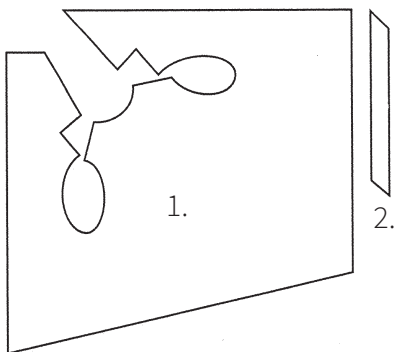
FABRIC CUTTING LAYOUT

Place pattern pieces on straight grain of fabric, keeping line parallel to selvage. Cut all pieces along cutting line indicated for desired size.

Mark all placement lines on **WRONG** side of fabric.

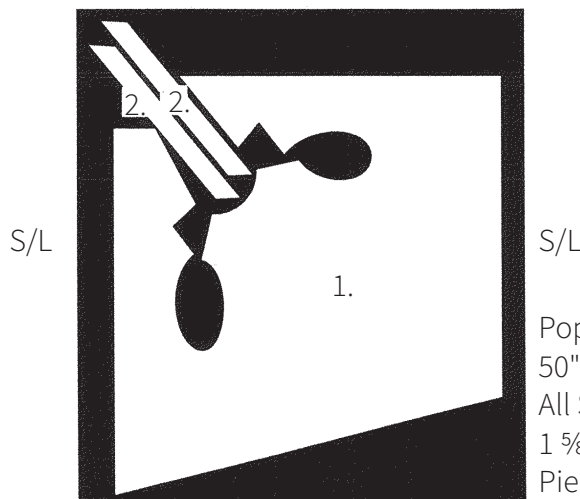
All seam allowances are ⅝" unless otherwise indicated.

All layouts are for "with nap". Cutting layouts show approximate position of pattern pieces.



Poppy Vest

- 1. Front & Back
- 2. Armscye Binding



Poppy Vest
50"/60" Fabric
All Sizes
1 ⅝ yards
Pieces 1, 2

PREPARATION

Prepare tagboard templates: (Tagboard is lightweight cardboard similar to standard file folder weight).

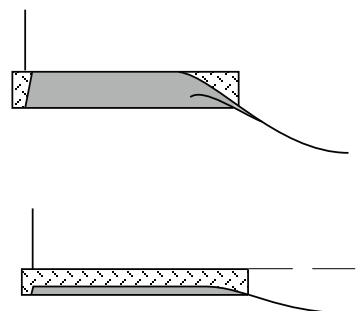
One 1½" W x 12" L

One 1⅛" W x 12" L

HEM PRESSING WITH TEMPLATES

To press the 1½" hem allowance, press edge of hem to wrong side using 1½"-wide template. Press edge of hem even with top edge of template. Continue to press hem by moving template as needed.

Open out pressed hem. Using 1⅛" template, position top edge of template on pressed hem foldline. Press raw edge up and over bottom edge of template.



Poppy Vest

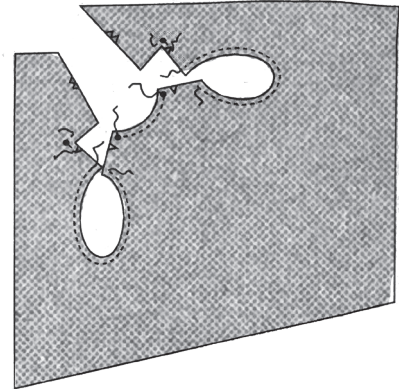
STAYSTITCHING AND HEM PRESSING

All seam allowances are $\frac{5}{8}$ " except armcye which is $\frac{3}{8}$ " seam allowance.

1. **STAYSTITCH** Back neck edge of FRONT AND BACK (1).

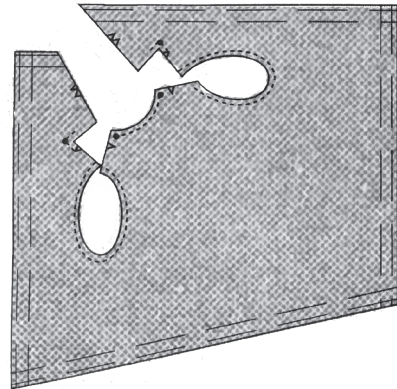
REINFORCE dots at inside corners of Fronts by stitching slightly inside $\frac{5}{8}$ " seam allowance.

STAYSTITCH armcye on $\frac{3}{8}$ " seamline.



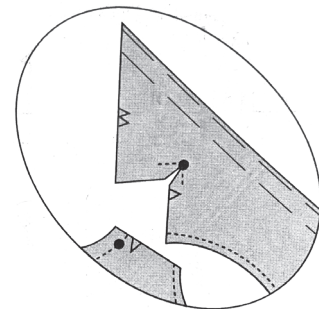
2. Using **HEM PRESSING TEMPLATE** method, place $1\frac{1}{2}$ " template on wrong side, press raw edge of hems up and over bottom edge of template so raw edge is even with top of template.

Open out pressed hems. Place $1\frac{1}{8}$ " template on fold of previously pressed hem and press raw edge over template making a $1\frac{1}{8}$ " finished hem. Hems will be stitched later.

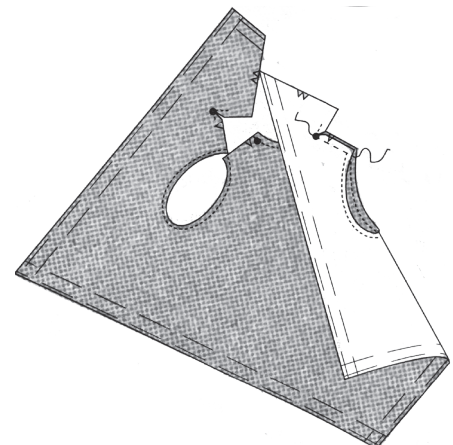


SHOULDER AND NECK SEAMS

3. Clip to reinforcement stitching at inside dot on right shoulder.

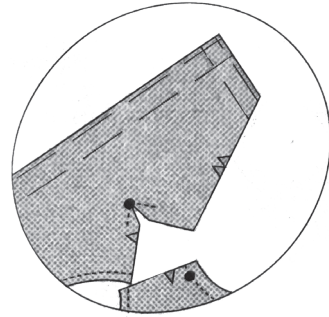


4. With right sides together and matching notch, stitch right shoulder seam.

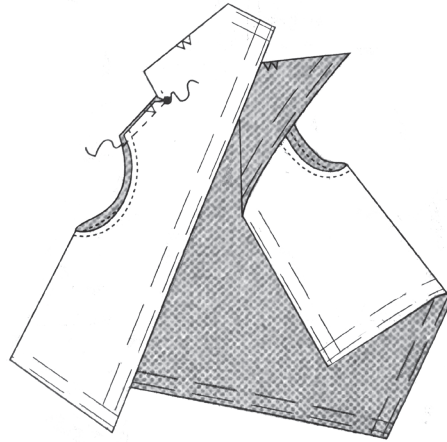


Poppy Vest

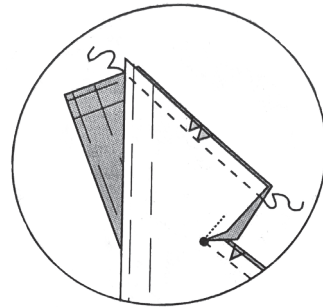
5. Clip to reinforcement stitching at inside dot on left shoulder.



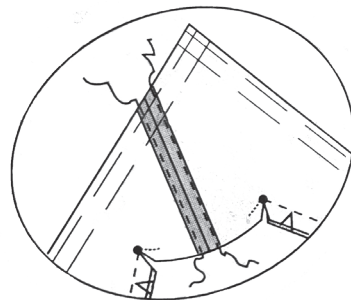
6. With right sides together and matching notch, stitch left shoulder seam.



7. With right sides together and matching notches, stitch collar seam.

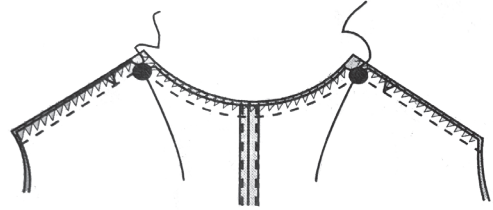


8. Press seam open. **TOPSTITCH** seam allowance.



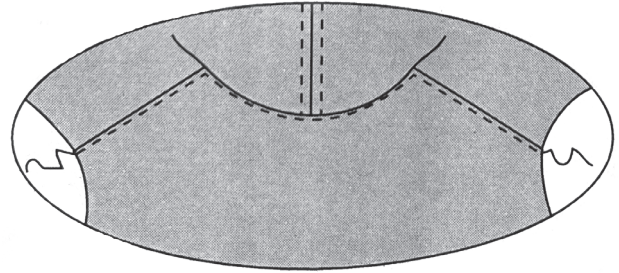
Poppy Vest

9. With right sides together, matching center back and notches, stitch back neck seam beginning and ending exactly with previous stitching at dots and securing stitching at each end.



FINISH neck and shoulder seam.

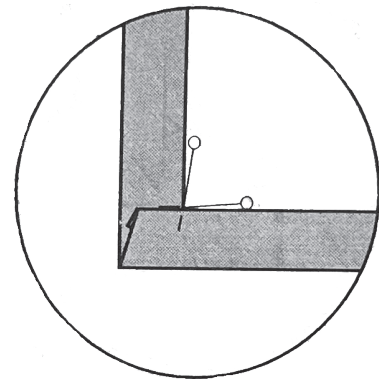
10. On right side of fabric, **TOPSTITCH** shoulder and neck seam as shown.



MITERING CORNERS

11. To form miter on each four corners, press hem folds on each corner again. Resulting pressed creases are important in marking where to sew miter.

12. On adjacent side of each pressed corner, where hem folds intersect at a right angle (some corners will not be an exact right angle), place a pin in fold to mark exactly where it meets other fold.

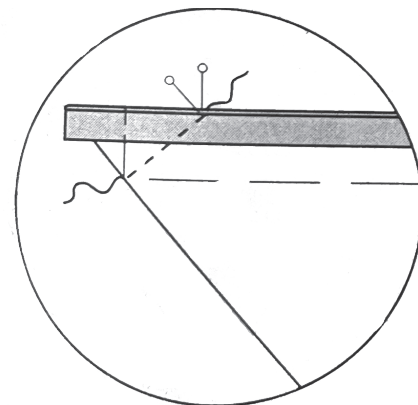


13. Open out hem folds keeping pins in place. With right sides together, match pins on folds. Stitch diagonally from pin marks to corner.

Before trimming, temporarily turn mitered corner to right side to check stitching and hem fold lines. Turn to wrong side again and trim seam. Press seam open, turn to right side and press.

After all miters are sewn, **BASTE** hems in place.

TOPSTITCH hems.



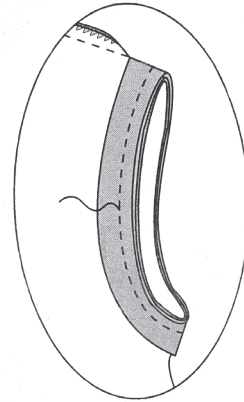
Poppy Vest

ARMSCYE BINDING

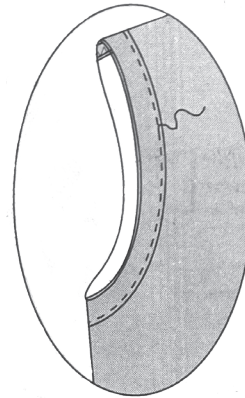
14. With *wrong* sides together, fold **ARMSCYE BINDING** (2) in half lengthwise.

Pin folded Armscye Binding to *wrong* side of armscye, raw edges even, to determine length of Armscye Binding to fit armscye. Unpin Armscye Binding and seam ends together.

With Armscye Binding on *wrong* side of garment and raw edges even, stitch Armscye Binding to armscye using a $\frac{3}{8}$ " seam allowance.



15. Press seam open over a tailor's ham to preserve curve of armscye. Clip seam allowance. Turn binding to right side and press seam flat. **BASTE** binding fold to garment. **TOPSTITCH** close to edge of binding to secure.



16. Make machine buttonhole where marked on right Front.

Sew button to left side of garment. Garment front edges are offset.

