



Poppy Vest Virtual Sew-A-Long







What to expect during our Sew-A-Long?

- A closer look into the step-by-step process of constructing the Poppy Vest
- Will include a blend of PDFs, videos, and live demos
- A time to have questions answered live with our team
- Prompts after each session for you to complete before the next session
- All sessions are recorded and will be posted to your course page

Poppy Vest Sew-A-Long Schedule:

SESSION #1 - MORNING

Friday, July 12th - 10:00am CDT

- Fitting Adjustments to Consider
- Considerations for your Fabric
- Cutting your Poppy Vest
- Preparing your Garment to Sew
- Staystitching
- Preparing Hems



SESSION #2 - AFTERNOON

Friday, July 12th - 2:00pm CDT

- Shoulder, Neck and Back Seams
- Mitered Corners
- Topstitching Hems





SESSION #3 - MORNING

Saturday, July 13th - 10:00am CDT

- Armscye Binding

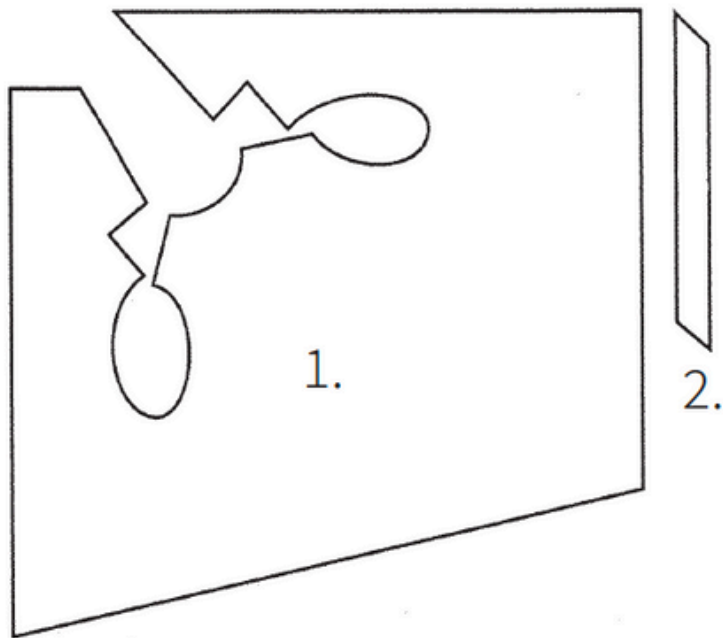


SESSION #4 - AFTERNOON

Saturday, July 13th - 2:00pm CDT

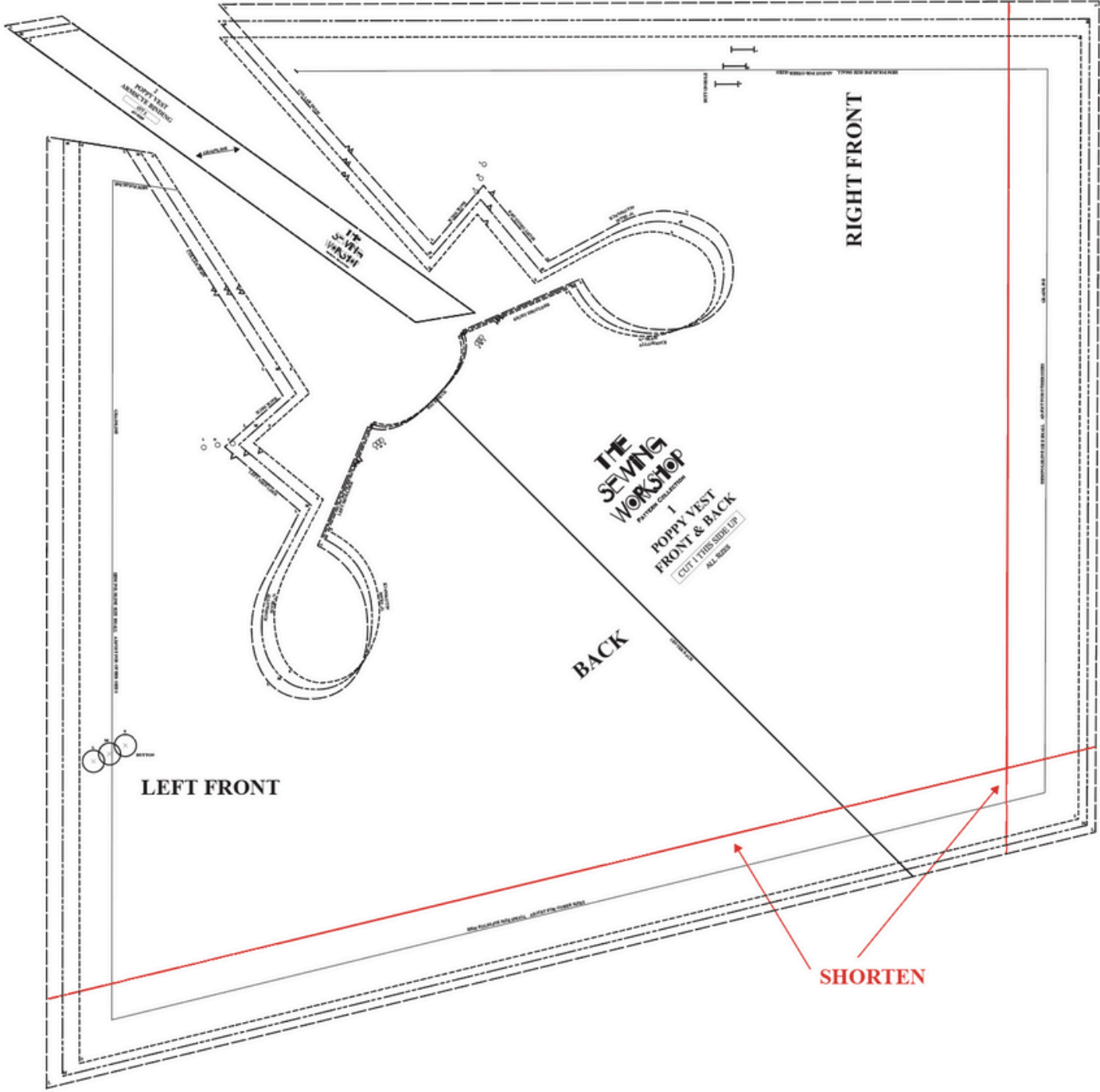
- Button & Buttonholes
- Wrap Up & Questions

Fitting Adjustments to Consider

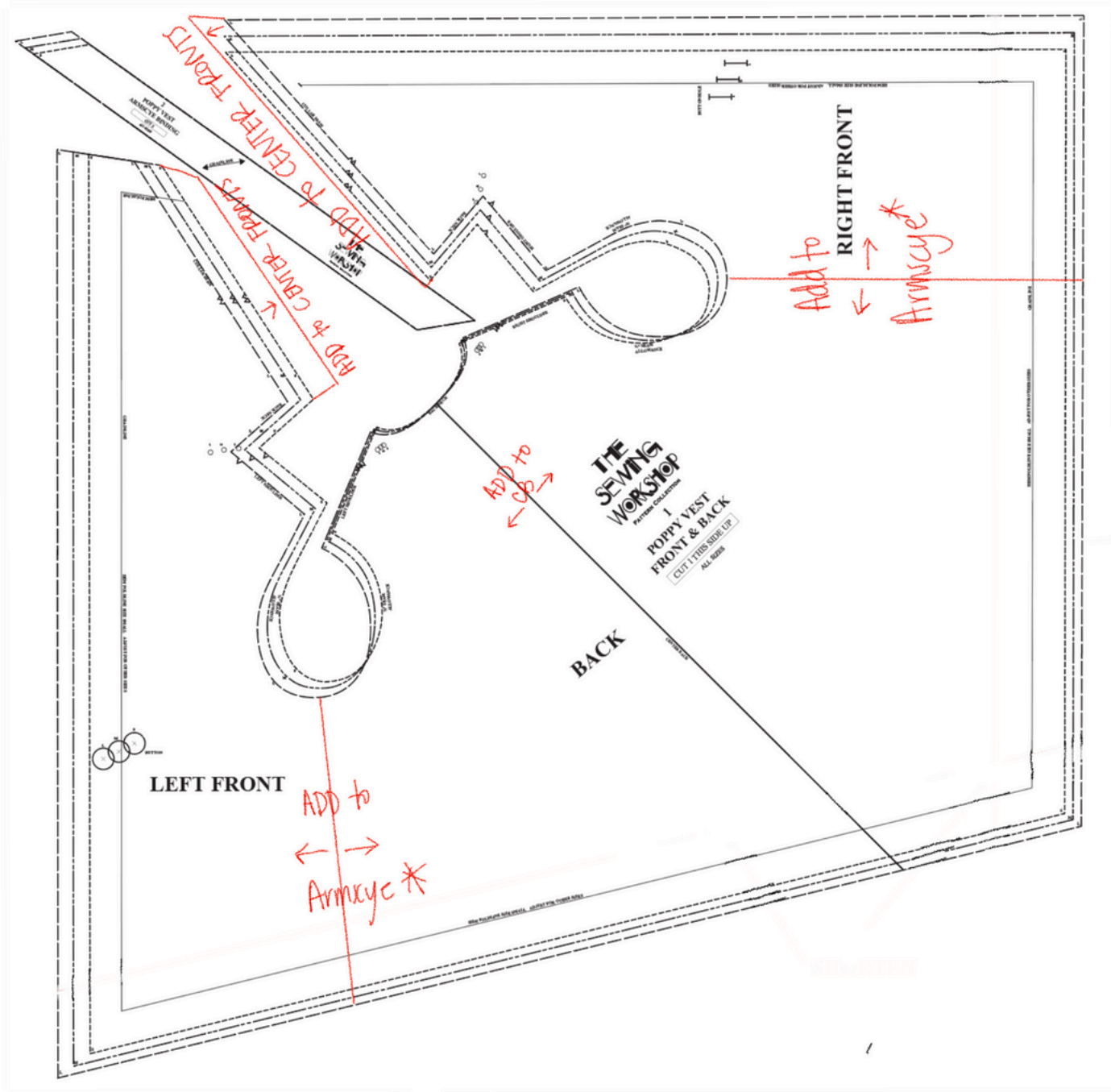


- **Lengthen / Shorten**
 - Create a Lengthen & Shorten Line
- **Widen or Narrow**
 - Add a Center Back seam
 - Add to Center Front
 - Add to bottom of Armscyes
- **Make Larger Armscye**
- **Shoulder Adjustments**
 - Same adjustments from *Fashion Fitting Encyclopedia* apply
- **Adding Sleeves***

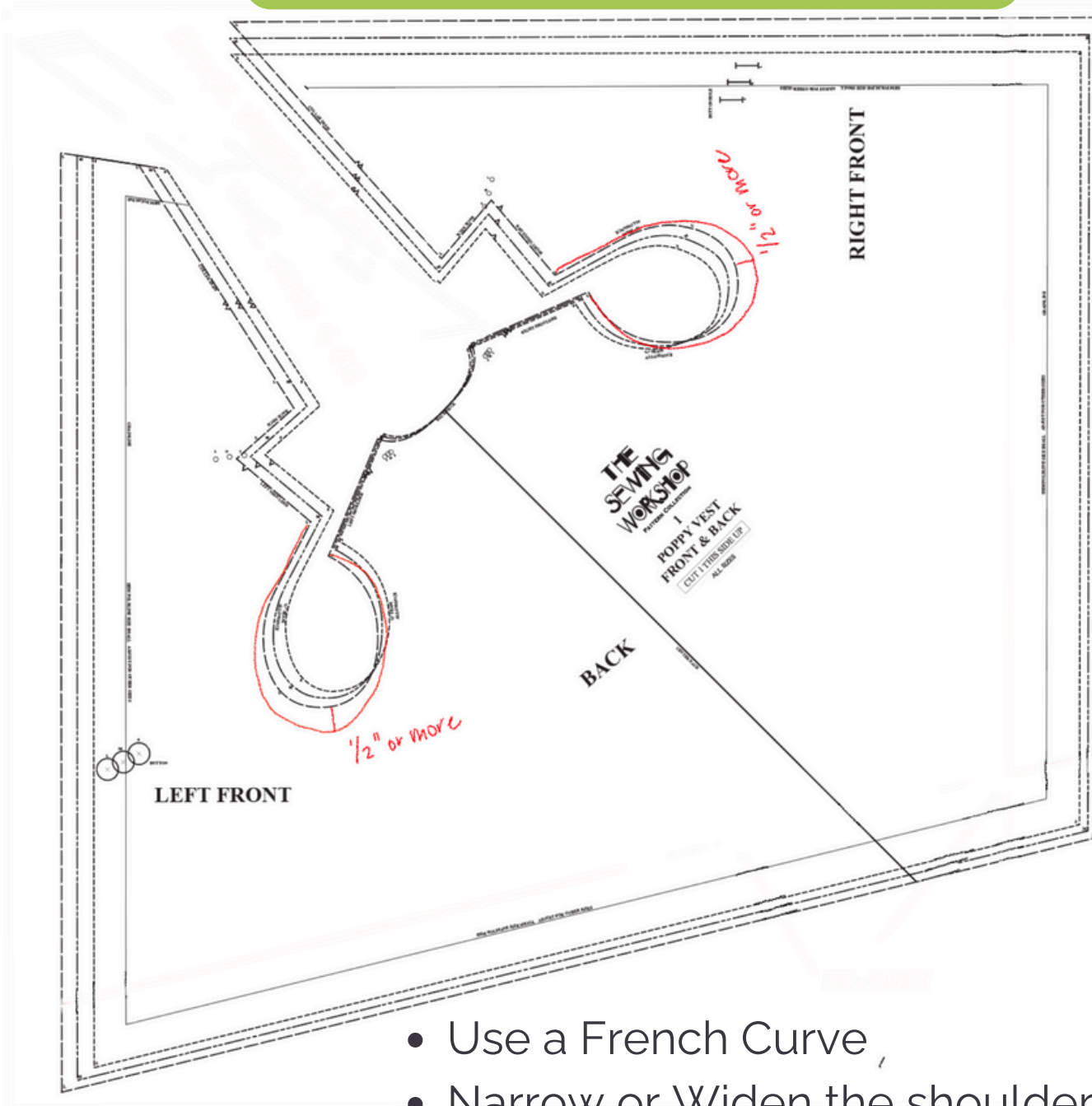
Lengthen / Shorten



Widen Pattern

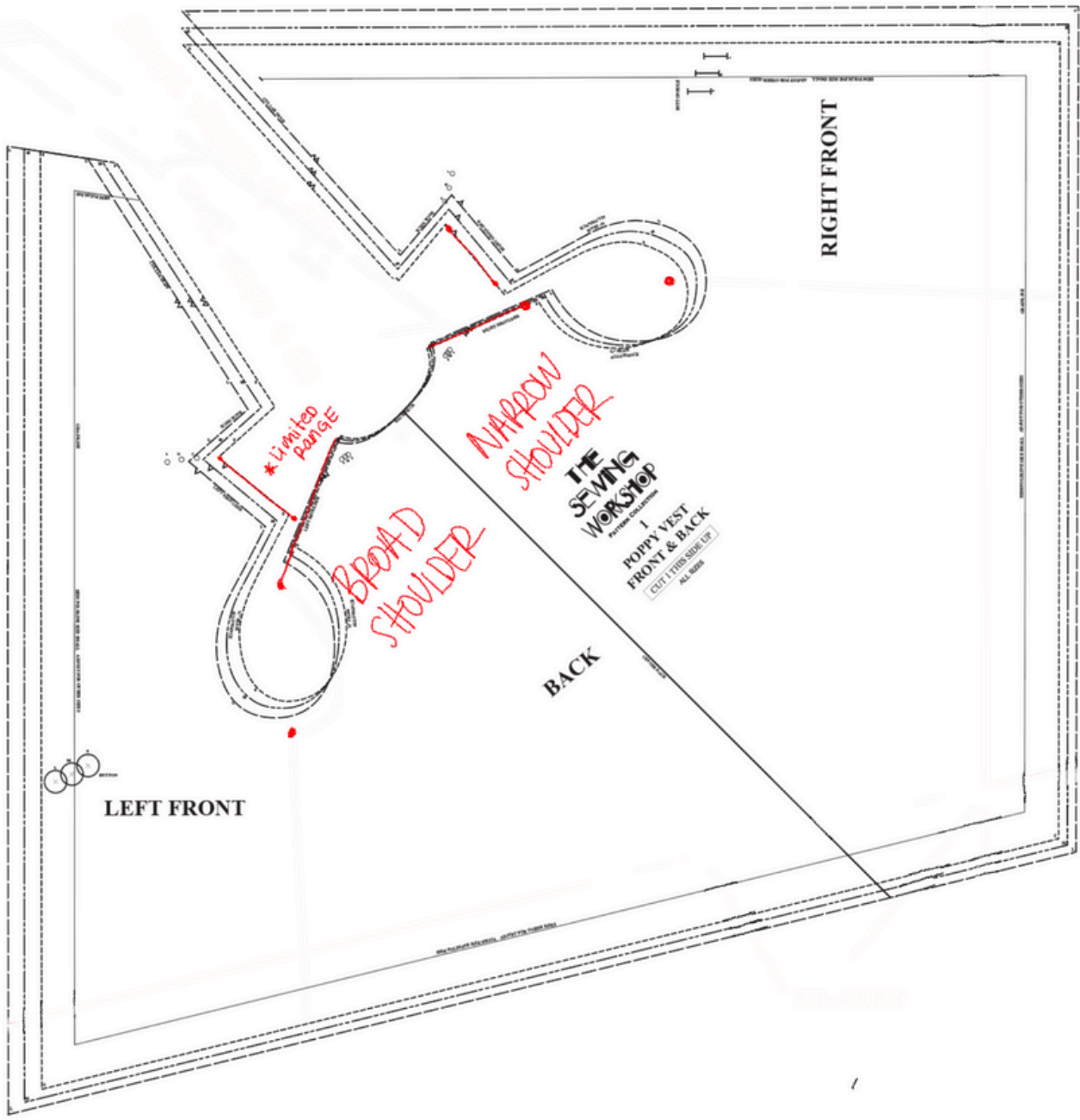


Make Larger Armscye



- Use a French Curve
- Narrow or Widen the shoulder as you wish

Shoulder Adjustments



- Broad Shoulder
- Narrow Shoulder
- Sloping Shoulder
- Forward Thrust
- Balanced Shoulder
- Extended Shoulder



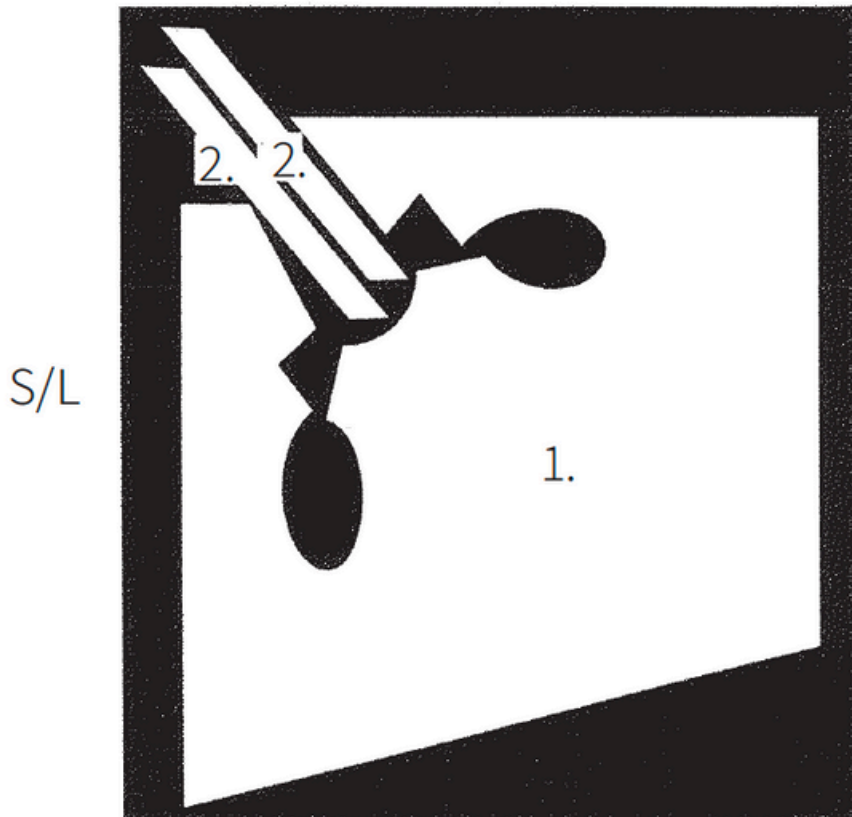


Considerations for Your Fabric

- **Kit Fabric:**
 - 82% Linen, 18% Poly Lurex
 - 56" wide
- Cut a small square to wash and dry as you like.
- If you are happy with the results, continue to wash your fabric
- I did not notice much difference in washing, although it did soften a little.

Cutting Out Your Poppy Vest

A Kathy Conversation



- Cut single layer
- Right side of fabric up
- Right side of pattern up
- Use a Rotary Cutter
- Use Tailor's Tacks rather than a marking pen
- Put 1 dab of interfacing under button & buttonhole on the Right Front
- Put 2 dabs of interfacing under the inside corners of the Fronts

Preparing your Garment

STAYSTITCH

1. **Staystitch** back neck edge of Front and Back
2. **Staystitch** dots at inside corners of Fronts by stitching slightly inside $\frac{5}{8}$ " seam allowance
 - a. This is where your dabs of interfacing are
3. **Staystitch** Armscye openings at $\frac{3}{8}$ "

Linda's Staystitching Tips:



#1: Staystitching on the seamline is important. Linda originally learned to staystitch slightly inside the seamline, however, sewing on the seamline will ensure you sew directly on the dot. This is important to sew your neck and back seams.

#2: Linda also skips step #3.

PREPARE HEMS

Use Hem Pressing Template Method:

1. Place 1½" template on wrong side
2. Place 1⅛" template on fold to make a 1⅛" finished hem
3. Place Fusiweb along your pressed hems. Do not remove paper.



*You will **Topstitch** hems later after you have mitered the corners!*

TOOLS

- Hem templates
- Fusiweb
- Iron
- Ironing Board

**See you for
Session #2**

Friday, July 12th at 2:00pm CDT

Shoulder, Neck & Back Seams

Mitered Corners

Topstitching Hems

Shoulder Seams

- Clip to reinforcement seams at inside dot on right shoulder
- Stitch Right Shoulder Seam - Backstitch at dot
- Clip to reinforcement seams at inside dot on left shoulder
- Stitch Right Shoulder Seam - Backstitch at dot



Press the seams toward the back using a Tailor's Ham.

TOOLS

- Walking Foot
- Scissors or snips
- Tailor's Ham

Collar Seam

- Stitch Collar seam
- Press seam open and **Topstitch**



This seam shows on the outside of the garment

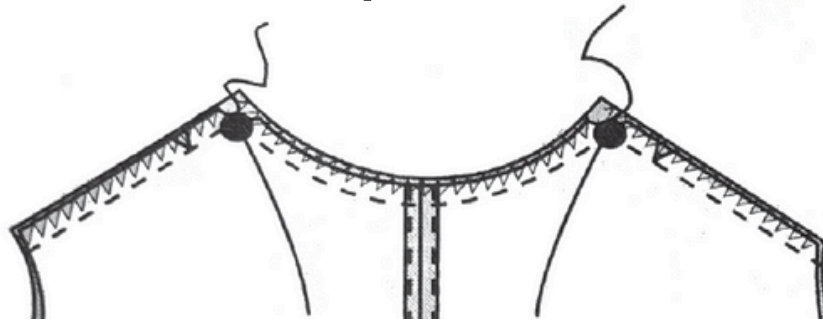
Take note of your fabric, does it ravel? You may want to finish the seam using pinking shears or 3-thread serging.

TOOLS

- #37 Foot
- Walking Foot
- Pinking Shears
- 3-Thread Serger

Back Neck Seam

- Stitch back neck seam beginning and ending exactly with previous stitching at dots and securing stitching at each end.
- On right side of fabric, **Topstitch** shoulder and neck seam.



TOOLS

- #37 Foot
- Walking Foot
- Iron
- Ironing Bard



Press seam towards the back

RESOURCES FOR THIS SEAM



San Diego Neckline Tips [Blog](#)
threadwear301: January 2017

RESOURCES FOR THIS SEAM



VAULT
FROM THE VAULT SERIES

ONLINE WORKSHOP

Carnelian Coat

Sew Confident! Series 13: Carnelian Coat
Neckline / Shoulder Seams

Neckline / Collar Tips

- Like this pattern directs you, it is easier to sew this seam in three steps.
- *Your Staystitching lines and Tailor's Tacks are very important!*
 - 1. Start with one shoulder seam
 - 2. Sew the next shoulder seam
 - 3. Finish with the neckline seam
- Clip the neckline curve to the Staystitching to make sure it can fit on the opposing shape



TOOLS

- Snips
- Pins
- Seam Ripper

- Backstitch at your Dot markings, making sure to *only sew through two layers.*
- Land right where you last stitched!

Mitered Corners

- The Poppy Vest has 5 mitered corners
 - 1 Symmetric Miter (45 degree angle)
 - 4 Asymmetric Miters
 - This is the same technique as a symmetric miter, except when the pins are matched, the folded edges do not line up.
- 4 corners will not be an exact right angle.

TOOLS

- Hem Templates
- Pins
- Chakoner
- Ruler
- Point Presser
- Point Turner

Symmetric Miter



Asymmetric Miter



The image is a YouTube video thumbnail. On the left, a woman with red hair and glasses, wearing a colorful patterned shirt, is smiling. The background is a textured, reddish-brown wall. In the top left corner, there is a circular logo with the text 'THE SEW MITERS WORKSHOP' and the text 'Sew Miters with Linda Lee' next to it. A red play button icon is centered over the woman's image. In the bottom left corner, there is a black bar with the text 'Watch on YouTube' and the YouTube logo. On the right side of the thumbnail, there is a white background with a brown curved shape at the top right. The text 'SEW MITERS WITH LINDA LEE' is written in large, bold, black letters. Below this, it says 'A Virtual Sew-A-Long Workshop'. At the bottom right, there is a green rounded rectangle with the text 'ZOOM RECORDING'. In the top right corner, there is a share icon and the text 'Share'.

Sew Miters with Linda Lee

Share

SEW MITERS
WITH
LINDA LEE

A Virtual Sew-A-Long Workshop

ZOOM RECORDING

Watch on  YouTube

Mitered Corner Resources



Digital Booklet
\$14.99



Online Workshop
\$10

Topstitching Hems

- After you have mitered all of your corners, the instructions say to Baste your hems in place. This is where we use Fusiweb.
- We recommend to start topstitching at the back of the garment.

TOOLS

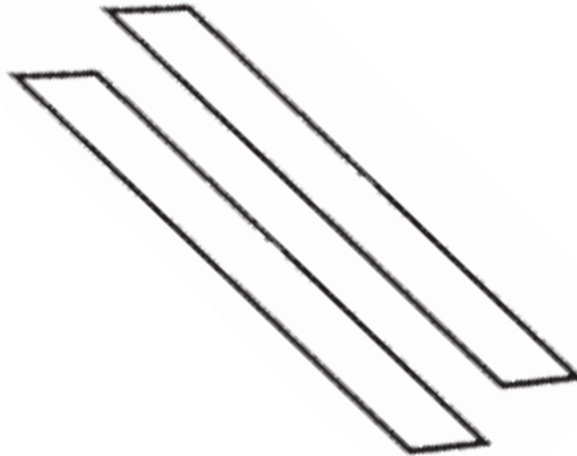
- Hem Templates
- Pins
- Chakoner
- Ruler
- Point Presser
- Point Turner

**See you tomorrow for
Session #3**

Saturday, July 13th at 10:00am CDT

Armscopye Binding

Armscye Binding



- You have cut two pieces of bias your binding for your Poppy Vest armholes.
- These will cover the raw edges of your armscye.
- You can use different fabric for your binding pieces! Any fabric can be used for bias bindings, but the general idea is to use a fabric that is not too bulky. Great fabrics to use include lightweight silks such as China silk, silk doupioni, and crepe de Chine.

Armscye Binding

- With wrong sides together, fold armscye binding in half lengthwise.
- Pin folded Armscye Binding to **wrong side** of armscye, raw edges even, to determine length of Armscye Binding to fit armscye. Cut enough to leave 1/2".
- Unpin Armscye Binding and sew ends together at 1/4"
- With Armscye Binding on wrong side of garment and raw edges even, stitch Armscye Binding to armscye using a 3/8" seam allowance.
- Press seam open over a tailor's ham to preserve curve of armscye. Clip seam allowance. Turn binding to right side and press seam flat. Baste binding fold to garment.
- **Topstitch** close to edge of binding to secure.

Armscye Binding



Start sewing your binding at the bottom of the armscye.

You may want to skip hand basting. Don't do it!

Linda's tips for this Bias Binding along the neckline apply to the armhole - it's just smaller. It's the same technique.

TOOLS

- Bias Binding
- Pins
- Snips
- Tailor's Ham
- Silk Thread
- Hand Sewing Needle

Armscye Binding



The image is a YouTube video thumbnail. On the left, a woman with short reddish hair and green glasses, wearing a light green polo shirt, stands in front of two mannequins. The mannequins are wearing floral dresses. The background is a grey slatted wall. In the top left corner of the video frame, there is a circular logo for 'THE SEWING WORKSHOP'. The video title 'Sew Confident! Series 10 July: The Gardenia Dress & Blouse' is displayed in white text at the top. A red play button icon is centered over the video frame. In the top right corner, there is a 'Share' button with a white arrow icon. The right side of the thumbnail has a green background with white text. The text reads 'Sew Confident!' in a large, handwritten-style font, followed by 'SERIES 10' in a smaller, sans-serif font. Below this, there are two dark teal rectangular boxes containing the text 'JULY VIDEO TUTORIAL' and 'Gardenia Dress & Blouse' respectively. At the bottom of the green area, it says 'WITH LINDA LEE'. In the bottom left corner of the video frame, there is a 'Watch on YouTube' button with the YouTube logo. The number '12' is visible in the bottom left corner of the video frame.

THE SEWING WORKSHOP

Sew Confident! Series 10 July: The Gardenia Dress & Blouse

Share

Sew Confident!

SERIES 10

JULY VIDEO TUTORIAL

Gardenia Dress & Blouse

WITH LINDA LEE

Watch on  YouTube

12

Binding Resources

Sew Confident!
CLASS IN A FLASH

Three Bias Bindings
(for fine and fun garments)
By Linda Lee



1. French Bias Binding
2. Offset Binding
3. Trio Binding

THE SEWING WORKSHOP

Three Bias Bindings Tutorial
\$18.99

**See you later for
Session #4**

Saturday, July 13th at 2:00pm CDT

**Buttonholes
Wrap Up & Questions**

Buttons & Buttonholes

- You received 1 - 1" pearl button for your Poppy Vest Kit
- Make machine buttonhole where it is marked on the Right Front
- Sew your button to the left side of the garment.



Remember, garment hems are offset.

TOOLS

- Seam Gauge
- Buttonhole Foot
- Buttonhole Cutter
- Tissue Paper
- Hand Sewing Needle

Questions? Comments?

Save the Dates!

Thursday, July 18th at 12:30pm CDT
Sashiko Lesson with Nancy Shriber

Wednesday, July 31st at 4:00pm CDT
Poppy Vest Show & Tell