

SEW CONFIDENT! NOVEMBER 2021

PICASSO SWEATSHIRT

MATERIALS LIST

- Picasso Top ([printed](#) or [digital](#))
- Picasso Sweatshirt Kit (optional purchase)
 - [Camel](#)
 - [Rose Blush](#)
 - [Overcast Blue](#)
 - [Mid-Century Red](#)
- Or use:
 - Fabric: Bamboo/Cotton fleece with knit right side and fleece wrong side
- Appliqués: Non-bulky fabrics such as gauze, lightweight cotton or linen, novelty textures
 - Fleece - 45" wide
 - 2 ¼ yards XS-M
 - 2 ½ yards L-XXL
 - Fleece - 60" wide
 - 1 7/8 yards XS-M
 - 2 ¼ yards L-XXL
 - Appliqués
 - 1 piece approximately 2" X 17"
 - Heatn'Bond
 - 1 piece approximately 2" X 17"
- 2 Spools Polyester Thread - 1 to match fleece and 1 to contrast appliqués
- 2.0/80mm Twin Needle
- 75/11 Universal Machine Needle or preferred needle for knits
- [Fusi-Web](#)
- [Rotary Cutter](#) – recommended but [shears](#) are fine
- [Trimming Scissors](#) or Snips
- [Glasshead Silk Pins](#)
- Pattern Weights
- 18" C-Thru Ruler
- [Chakoner](#) or other Chalk Marker
- Frixion Pen or other Water Soluble Pen
- Walking Foot or engage even feed feature
- Steam Iron

You will need a sewing machine that has been cleaned and oiled and is in good condition. If your machine also embroiders and has a 9mm throat plate, you may want to invest in a 5mm-wide throat plate. If you have the even-feed feature on your machine, engage it. If not, add a walking foot, if possible.

SEW CONFIDENT! NOVEMBER 2021

PICASSO SWEATSHIRT

PREPARATION

Plan to have the following work done before the start of the video class.

1. Download and print out the Picasso Top digital pattern or purchase the printed pattern.
2. Review the changes to the pattern *Front, Back, Sleeve & Pockets*, **located at the end of this document.**

Pattern Work

Determine your size for the top using your full bust measurement. Refer to the Size Measurement Chart on the back of the pattern envelope or last page of the digital pattern. Use this chart to find your full bust measurement and select that size. Then measure the bust circumference on the pattern. Compare the finished measurements to your bust size and you will know how much design ease is built into the pattern. This garment is oversized and meant to have a generous amount of ease.

Make any of your standard fitting alterations. Before cutting out your pattern pieces, refer to the PDF for the following pattern changes. Use the Prismacolor red pencil to make pattern alterations.

FRONT

- Use the Right Front pattern piece. You will not need the Left Front pattern piece.
- Remove the 1" hem allowance.
- Use the Center Front line on the pattern as a foldline.
- Refer to the PDF printout to draw a dart along the right side seam only.

BACK

- Remove the 1" hem allowance
- Eliminate the center back seam by drawing a line $\frac{5}{8}$ " from the back cut line and using that as a foldline.
- Refer to the PDF printout to draw a dart along the right side seam only

SLEEVE

- Remove the 1" hem allowance.
- Refer to the PDF printout to draw a dart along the bottom edge.
- Add $\frac{3}{8}$ " to the bottom of the sleeve seams at the bottom, tapering to the original size at the underarm.

POCKET

- Make two new pattern pieces for the pocket
- 1 - 6 $\frac{1}{2}$ " W X 7" H
- 1 - 4 $\frac{3}{4}$ " W X 7" H

NECK BINDING

- Use the original pattern piece #6

Cut out your pattern pieces on the new lines and press.

SEW CONFIDENT! NOVEMBER 2021

PICASSO SWEATSHIRT

Fabric Prep

Pre-wash and dry the fleece fabric on cool settings. The finished garment will be washed again to allow the raw edges to curl.

Cutting Out

Before cutting out a single pattern piece, lay out your pattern pieces and make sure you have enough fabric!

If your fabric is drawing up along the selvages, cut away the selvege up to the point where the fabric lies flat along the edges.

Cut out the fleece single layer. Both the Front and the Back pieces are cut on the fold, so pin along the foldline and flip the pattern to cut the second side. Remember to flip the Sleeve pattern piece to get a left and a right sleeve.

Use a rotary cutter to cut out the pattern pieces. You want nice, straight and even edges since the cut edges will show on the outside of the garment. Make note of the Sewing Overlapping Seams instructions in the pattern instructions. We will be removing seam allowances as we go along, so don't cut them away ahead of time.

The corner dots on the Front and Back do not need to be marked. Use a Frixion type pen to mark the points of the darts and the dart legs at the edges.

You can cut the appliqués later after watching the video but here are the approximate sizes:

1 - 2" X 2 ½"

1 - 1 ½" X 2 ¼"

1 - 2" X 7 ½"

Clean and oil your sewing machine, wind a bobbin (remove any other thread that might be wound on your bobbin), thread your machine, and sit back and wait for the class video. You are all set!

Video Access

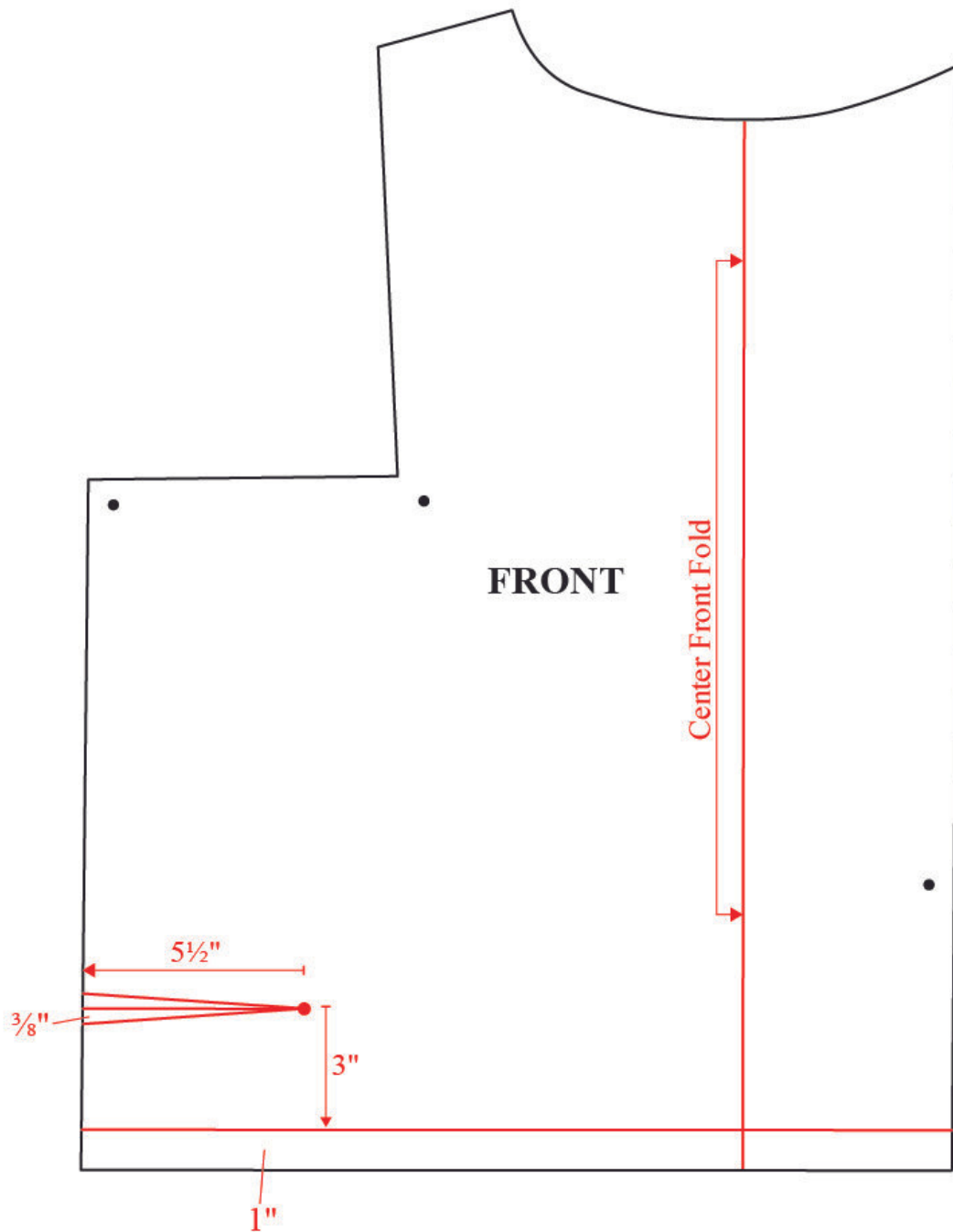
The class video will be available for viewing November 19, 2021. Details and links for accessing the class video and the follow-up Zoom Q&A sessions will be sent to you prior to the class in a separate email.

Thanks for joining me in this year of sewing.

Let's sew with confidence,
Linda

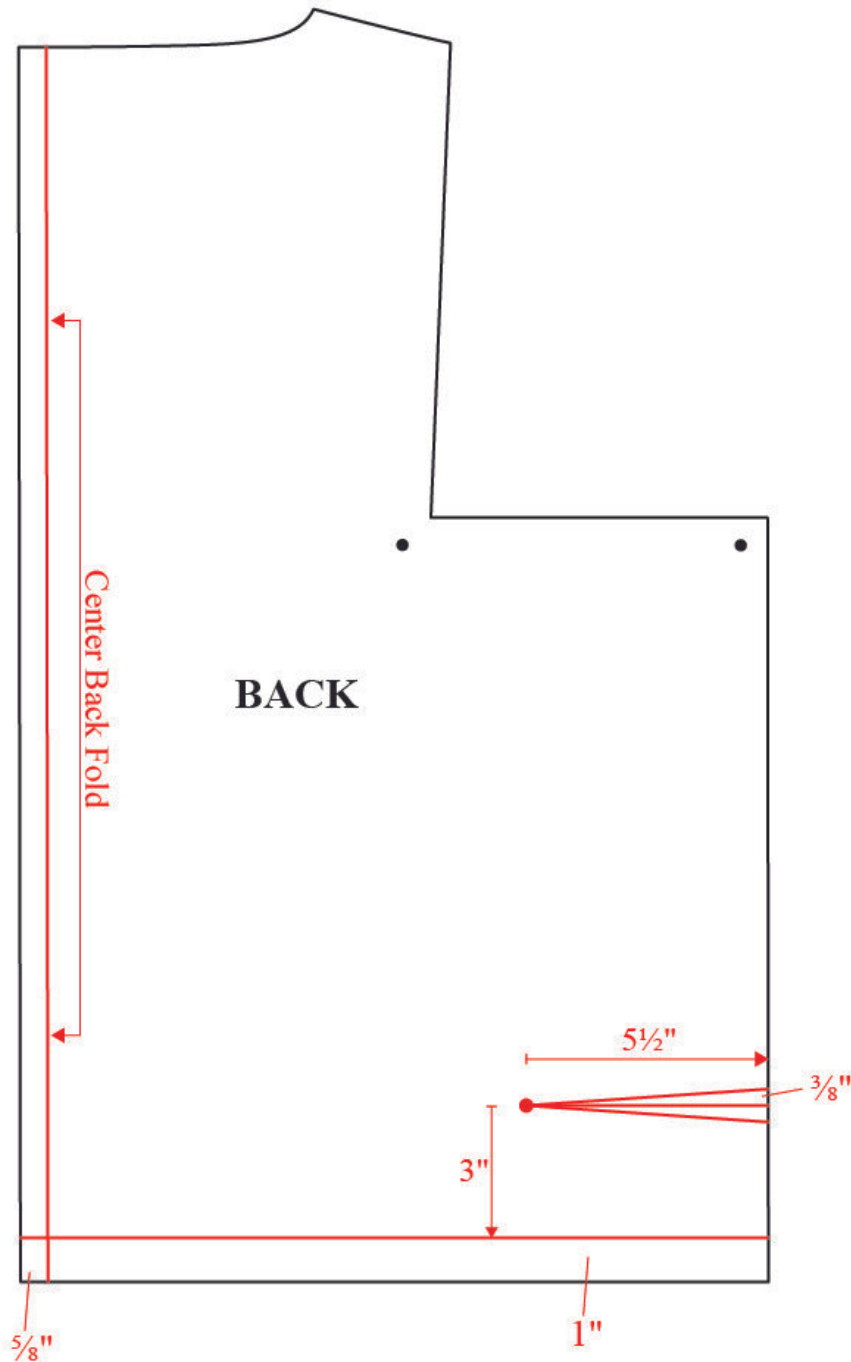
SEW CONFIDENT! NOVEMBER 2021

PICASSO PATTERN CHANGES - FRONT



SEW CONFIDENT! NOVEMBER 2021

PICASSO PATTERN CHANGES - BACK



SEW CONFIDENT! NOVEMBER 2021

PICASSO PATTERN CHANGES - SLEEVE & POCKETS

