



Bamboo Top

VAULT

SERIES 13 | Sew Confident! 2024

MATERIALS LIST

- [Bamboo Top](#) digital pattern
- [Bamboo Top Kit](#) (optional purchase)
 - Or use similar fabric
 - 45" 3¼ yards Sizes S - M
 - 45" 3½ yards Sizes L
 - 60" 2½ yards Sizes S -L
- 1 spool 100% Cotton Thread
- 8 - 5/8" Buttons
- 3 spools Isacord thread or overlock thread for serging
- 1 yard Fusible Interfacing
- [Frixion Pen](#) or other erasable pen
- [Trimming Scissors](#)
- [Tracing Paper & Tracing Wheel](#)
- [Buttonhole Cutter](#)
- [Sleeve Board](#)
- [Point Presser](#)
- [Seam Gauge](#)
- [Fusi-Web](#)
- [Point Turner](#)
- [Shears](#)
- Edgestitch Foot
- Walking Foot (or engage even feed feature)
- [Glasshead Silk Pins](#)
- [Silk Thread and Hand Sewing Needle](#)
- [C-thru Ruler](#)
- [Chakoner](#)
- [Iron](#)

You will need a sewing machine that has been cleaned and oiled and is in good condition. If your machine also embroiders and has a 9mm throat plate, you may want to invest in a 5mm-wide throat plate. If you have the even feed feature on your machine, engage it. If not, add a walking foot, if possible. We recommend a serger for seam finishes.

Purchase the Pattern

Purchase the digital Bamboo Top pattern. You can now select for us to print the pattern for you from our in-house printing service.

Fabric Preparation

Pre-wash a small sample of the fabric. If you're happy with the result, wash your yardage.

Interfacing

The following pattern pieces are interfaced:

- 1 - Front Interfacing
- 5 - Back Facing
- 7 - Front Band
- 10 - Cuff

Fitting

The Bamboo Top is a loose fitting, unlined top. You may be able to make one size smaller than your normal size. We recommend tissue fitting this pattern first. It is recommended to measure your wrists to ensure the cuffs fit, as they tend to be small.

References to Consider:

- [Fitting the Bust Download Tutorial](#)
- [Fitting Shoulders Download Tutorial](#)
- [Fashion Fitting Encyclopedia](#)
- [Fashion Fitting Workbook](#)

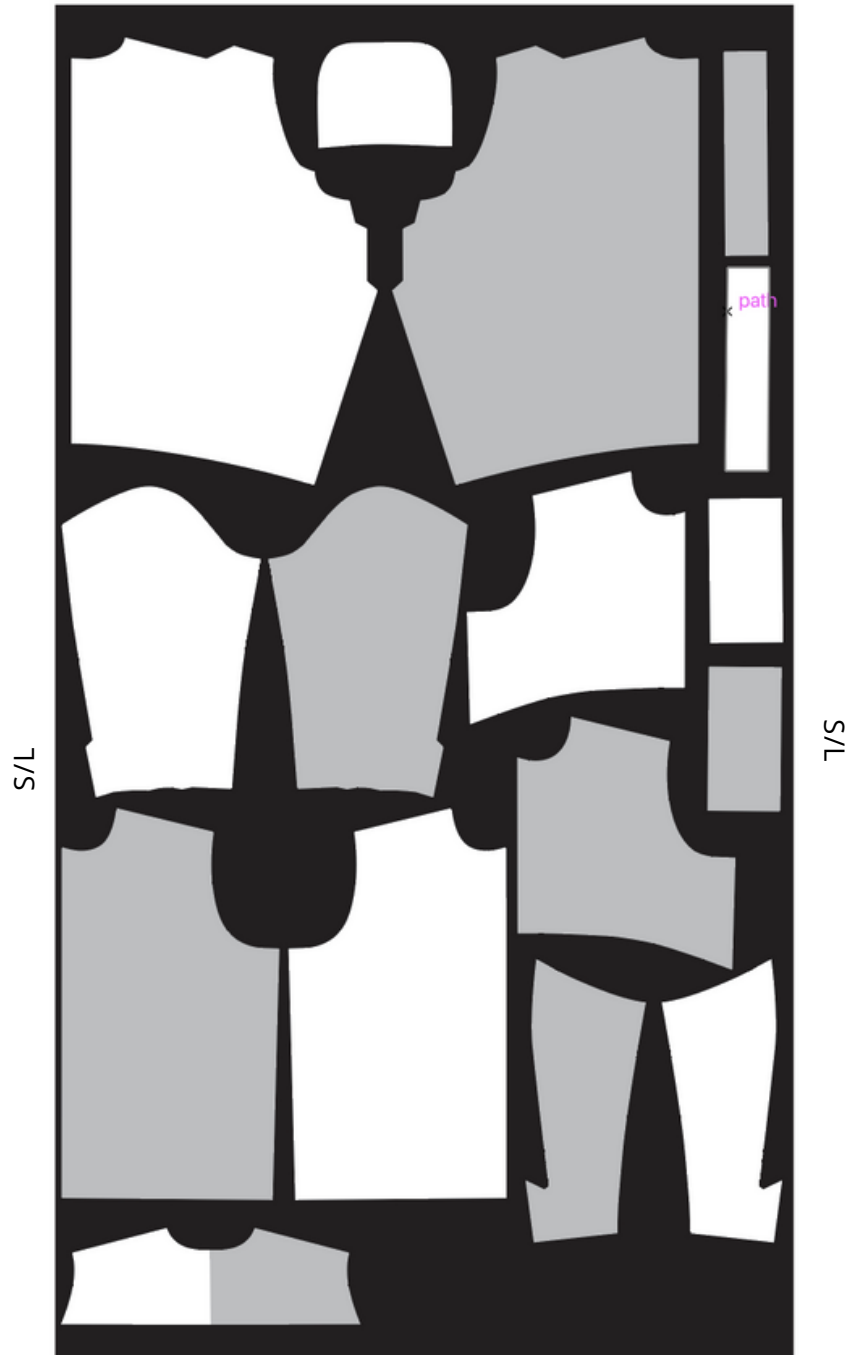
SIZE MEASUREMENTS (inches)

SIZE	S		M		L	
	8	10	12	14	16	18
Bust	32½	34	36	38	40	42
Waist	25½	26½	27½	29	31	33
Hip	35	36	37	39½	41½	43½

FINISHED MEASUREMENTS (Inches)

SIZE	S	M	L
Bust	41¾	43½	45¾
Hip	49¾	51¼	52¾
Center Back Length	24¾	24¾	25¾
Lower Edge Width	58¼	60¼	62¼

We recommend cutting out the Bamboo Top single layer. This is the format we used for the Bamboo Top kit fabrics.



Video Access

The Online Workshop will be posted to your course page on February 2nd. We recommend watching the video for details in sewing each intricacy of this garment.

Q&A Access

There will be two Zoom Q&A sessions this month:

February 8th at 12:30pm CST - A tutorial in making the Bamboo Pullover Variation

February 22nd at 4:00pm CST - Show (and tell!) your Sew Confident! projects.

Check your course page for the meeting link. If you can't join us, the Zoom recording will be uploaded to your course page.

*Thank you for joining us for a year of looking into the vault.
Happy sewing,*

Linda & The Sewing Workshop Team

QUESTIONS?

alex@sewingworkshop.com 

Alex cell: 440.665.4853 

301 S. Kansas Ave. Suite A 

Topeka, KS 66604

sewingworkshop.com 



#swbambootop

#sewingworkshop

#sewingworkshoppatterns

#SC24

#fromthevault

#savvysewingseries